

in the treatment of  
peptic ulcer

# ROTER

has particular  
advantages



**ROTER** achieves a high cure rate and often gives effective control of even refractory chronic cases which have resisted other treatments.

**ROTER** in many cases obviates the need for hospitalization or surgical intervention.

**ROTER** helps patients to keep ambulant and symptom-free with a minimum of medication and with few, if any, dietary restrictions.

**ROTER** in general practice enables the physician to take adequate care of his gastric cases without frequent or prolonged supervision.

**ROTER** has no known side effects.

**ROTER** requires no supplementary medication such as sedatives or anti-spasmodics.

**ROTER** shows a saving in cost when compared with conventional methods of treatment.

#### REFERENCES

*Therapie der Gegenwart*, 1953, 3, 108  
*Gazz. Med. Ital.*, 1954, 113, 343  
*Die Medizinische*, 1955, 4, 163  
*British Medical Journal*, 1955, 2, 827  
*C.R.S. Biol.*, 1956, 150, 1019  
*Am J. Gastroenterology*, 1957, 28, 439  
*Wiener Med. W.*, 1958, 108, 218  
*Ärztliche Praxis*, 1958, 10, 766  
*Journal Lancet*, 1960, 80, 37

#### FORMULA

Each Roter tablet contains:  
Bismuth Subnitrate Roter (350 mg.), Magnesium  
Carbonate (400 mg.), Sodium Bicarbonate  
(200 mg.) and Cortex Rhamni Frangulae (25 mg.).

#### PACKINGS OF ROTER TABLETS

Tins of 40 and 120, also dispensing sizes,  
360 and 720 (P.T. exempt). Basic N.H.S.  
price: Under 1/- for 10 tablets.

**ROTER TABLETS are in Category "S" Literature on Request**

F.A.I.R. LABORATORIES LTD • TWICKENHAM MIDDLESEX

**MERSUTURES\***

**ETHICON\***



**NEW FOR**

# WORRYGUTS

**'NEUTRADONNA' SED.** powder

THE COMPLETE TREATMENT FOR THE DYSPEPTIC

Antacid—Antispasmodic—Sedative—Vitamin C

*Composition:* Each level measure contains:

Sodium aluminium silicate 970 mg.

Amylobarbitone 8 mg.

Ascorbic acid 12.5 mg.

Belladonna alkaloids  $\equiv$  0.01 ml. liquid extract of belladonna.

*Dosage:* One to two level measures four times a day.

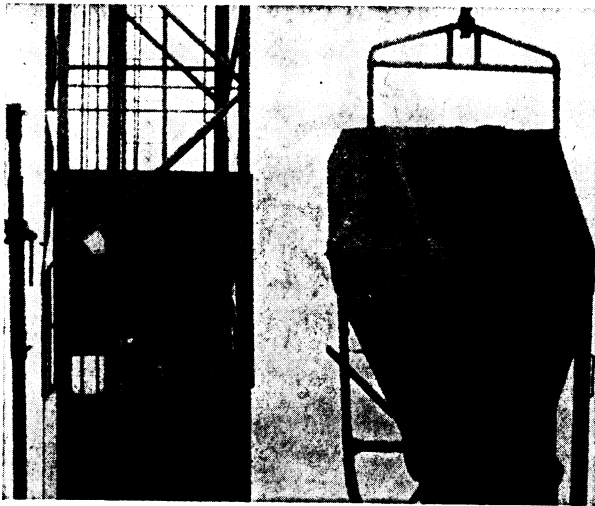
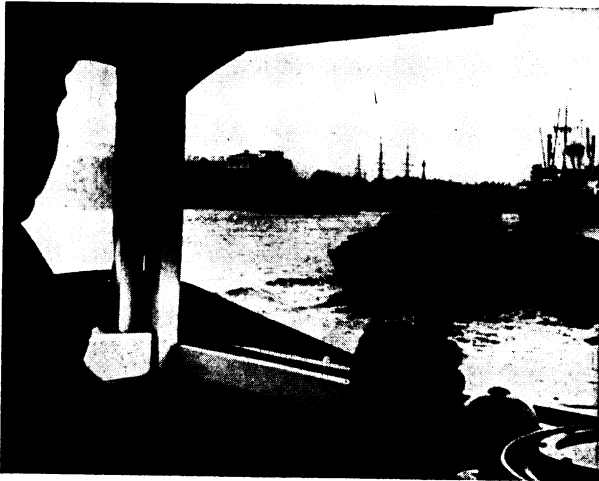
*Presentation and basic N.H.S. cost:* 100 G. container with measuring spoon . . . 5/6d.

A Schering product



**BRITISH SCHERING LTD, Slough Bucks England**

'Neutraddonna' and 'Schering' are registered trade marks.



MEN  
WHOSE  
JOBS  
CAUSE  
WORRY  
—AND  
GASTRIC  
DISTRESS  
NEED

More and more people in every walk of life, subjected to the stresses and strains of life today, suffer from gastric disorders. And if mental stress has not actually caused the condition it will almost certainly aggravate it. 'Stelabid' is specific for such disorders. It reduces gastric secretion, inhibits motility and spasm, relieves physical pain and protects against nausea and vomiting. Furthermore, 'Stelabid' combats the underlying cause by effectively relieving the anxiety and tension which provokes the condition.

Each 'Stelabid' tablet contains 1 mg. 'Stelazine' (brand of trifluoperazine) and 5 mg. 'Tyrimide' (brand of isopropamide).  
In containers of 30 and 250.

*Literature containing prescribing information is available on request.*

WHEN MENTAL STRESS PROVOKES GASTRIC DISTRESS  
**STELABID** GIVES COMPLETE SYMPTOMATIC RELIEF—  
NIGHT AND DAY

*The 'Tyrimide' Constituent*

*'Tyrimide' has been shown to be one of the longest-acting of the modern anticholinergic drugs. It possesses an exceptionally powerful antisecretory and anti-spasmodic action, and side effects accompanying its use are infrequent, mild and transient.*

..... **STELABID**



SMITH KLINE & FRENCH LABORATORIES LTD  
Welwyn Garden City, Herts

'Stelabid', 'Stelazine' and 'Tyrimide' are trade marks. Brit. Pat. Nos. 772921, 813861, 857547

to aid the  
management of  
peptic ulcer

PORTYN\* produces marked depression of gastro-intestinal spasm, gastric secretion and hypermotility, and, at effective dosage levels, the incidence of side-effects is unusually low.

PORTYN is thus recommended as an excellent adjunct in the symptomatic control of peptic ulcer and gastro-intestinal spasm.

# PORTYN

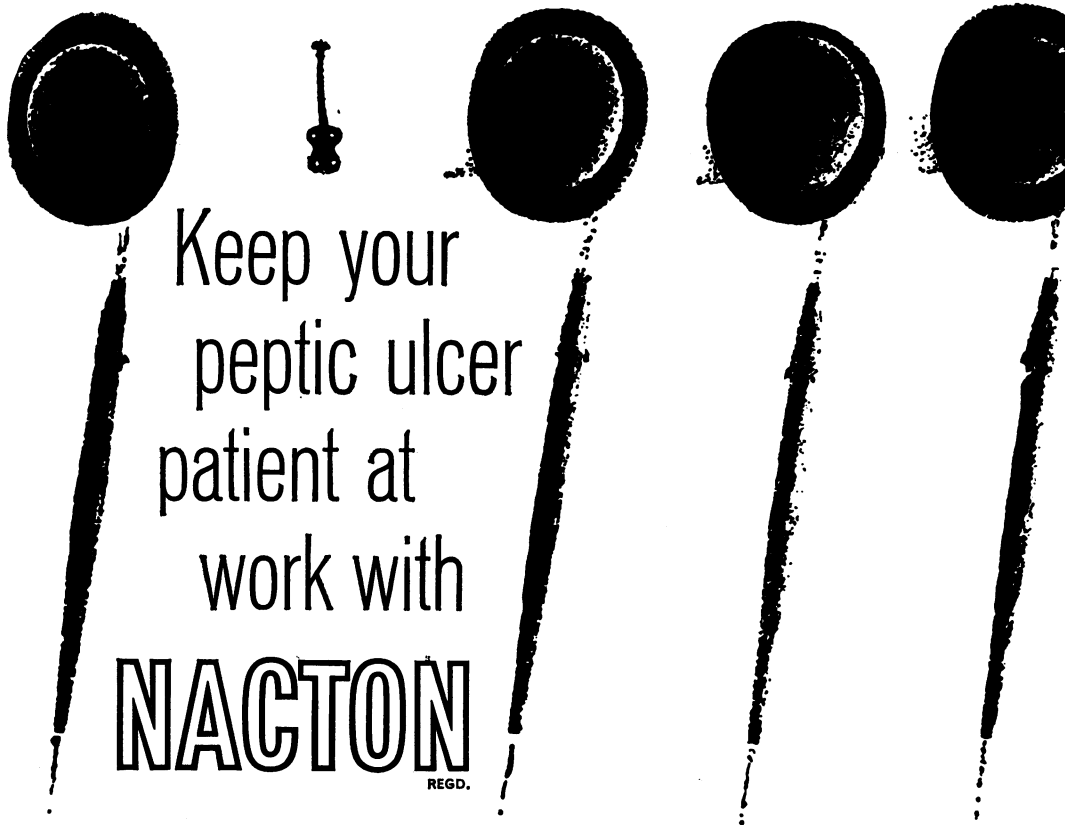
potent anticholinergic agent

PORTYN Kapseals each contain 10 mg. benzilonium bromide. Initial adult dose—1 Kapseal three times daily.

\* TRADE MARK

**PARKE-DAVIS**

HOUNSLOW, MIDDLESEX. TELEPHONE: HOUNslow 2361



Keep your  
peptic ulcer  
patient at  
work with  
**NACTON**  
REGD.

Nacton halves gastric acid secretion:  
lessens gastric spasm without  
side-effects in therapeutic doses

During a 3-year follow-up trial\* with Nacton when the patients' food was entirely of their own choosing:

- Antacids were found unnecessary
- Duodenal deformity was reduced in 42% of the patients
- Average loss of time from work was reduced from 4 weeks to only half a day per year.

\*Brit. med. J., (1961), i, 1575

NACTON (poldine methymethosulphate) is a product of British Research at  
**BEECHAM RESEARCH LABORATORIES**





### **Hand Polishing**

Much of the strength and holding quality of surgical catgut depends upon the surface of the strand. Each strand of London Hospital Catgut is hand polished to give maximum tensile strength and grip on the knot. Great care is taken to avoid excessive polishing which will weaken the strand, making it more brittle and less flexible.

**LHC** LONDON HOSPITAL CATGUT for strength and grip



## IN ULCERATIVE COLITIS

### **SALAZOPYRIN is not 'just another sulphonamide'**

Salazopyrin's unique pharmacologic 'profile' distinguishes it from all other sulphonamides in ulcerative colitis therapy. As an acid azo compound, Salazopyrin has a marked affinity for connective tissue, especially tissues rich in collagen and elastin (including the colonic submucosa). It is during storage here that the therapeutic action presumably takes place —at the very concentration sites where primary pathologic changes occur in ulcerative colitis.

- Prompt remission of symptoms
- Bleeding and frequency of stools sharply reduced
- In many cases rectal mucosa heals within a month
- Can be given safely over long periods

*'Sulphasalazine is a useful agent in ulcerative colitis'.  
BMJ 2:1710 (1962)*


## **SALAZOPYRIN**

Bottles of 100 and 500 tablets each containing  
0.5 Gm Salicylazosulphapyridine

**PHARMACIA**  
(GREAT BRITAIN) LTD

Sinclair House · The Avenue  
West Ealing · London W13

A member of the Swedish Pharmacia Group of Companies  
Distributed by Savory & Moore Ltd · 60/61 Welbeck Street · London W1



when infection is at hand

## 'Streptotriad'\*

tri-sulphonamide/streptomycin

for the comprehensive treatment of bacillary dysentery.

Effective in the acute phase, the convalescent carrier state, and the symptomless carrier.

## 'Thalazole'\*

phthalylsulphathiazole

for short-term prophylaxis and the less severe acute case.

'Streptotriad' and 'Thalazole' may be administered as tablets or suspension.

**M&B** brand Medical Products



Manufactured by  
**MAY & BAKER LTD**

Distributors  
Pharmaceutical Specialities (May & Baker) Ltd Dagenham

\*Trade mark

MA552/100

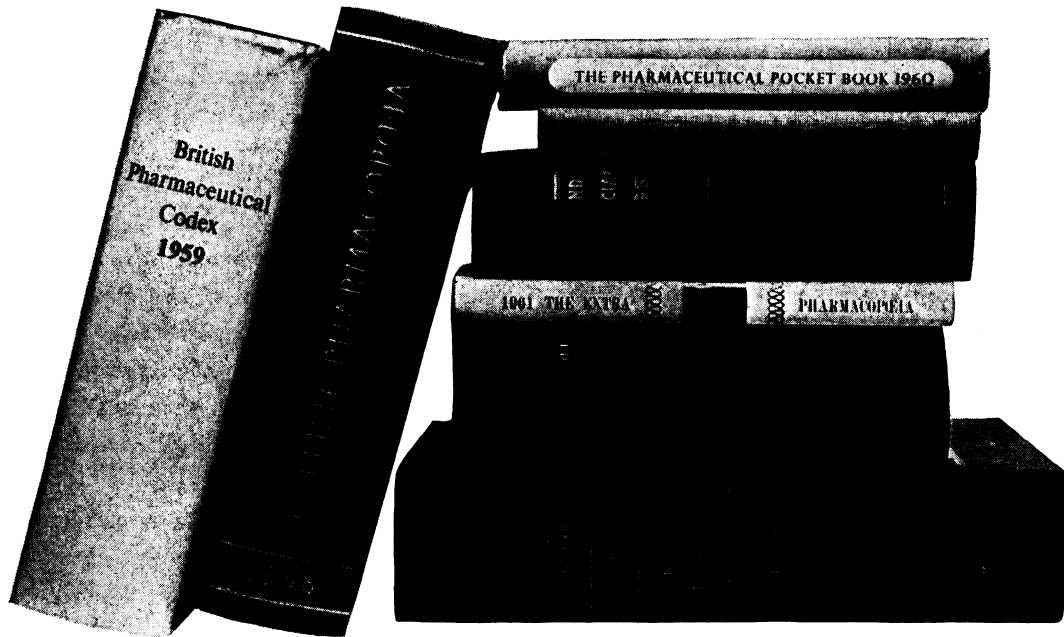
by the book...

# Pro-Banthine

brand of propantheline bromide

recognized as a standard anticholinergic

rapidly relieves the pain of peptic ulcer



Available in 15 mg. tablets. Also supplied in tablets combined with Dartalan for peptic ulcer and functional dyspepsia associated with anxiety, and with Phenobarbitone for patients requiring sedation.

'Pro-Banthine' and 'Dartalan' are Registered Trade Marks

**Basic N.H.S. Cost : 1/2d daily**

**Searle** *Research in the Service of Medicine*

SR 328

# ASPIRIN IS SAFER WHEN IT IS SOLUBLE

*Soluble aspirin is safer  
when it is stable*



N.H.S. Basic Price 12/6 for 500 tablets in foils.

SOLPRIN provides soluble aspirin in its most stable form and dissolves rapidly in water to form a solution of calcium acetylsalicylate.

SOLPRIN is easy to take and palatable. It has proved rapid and reliable in its analgesic effect and is extremely well tolerated, even in prolonged and massive dosage.

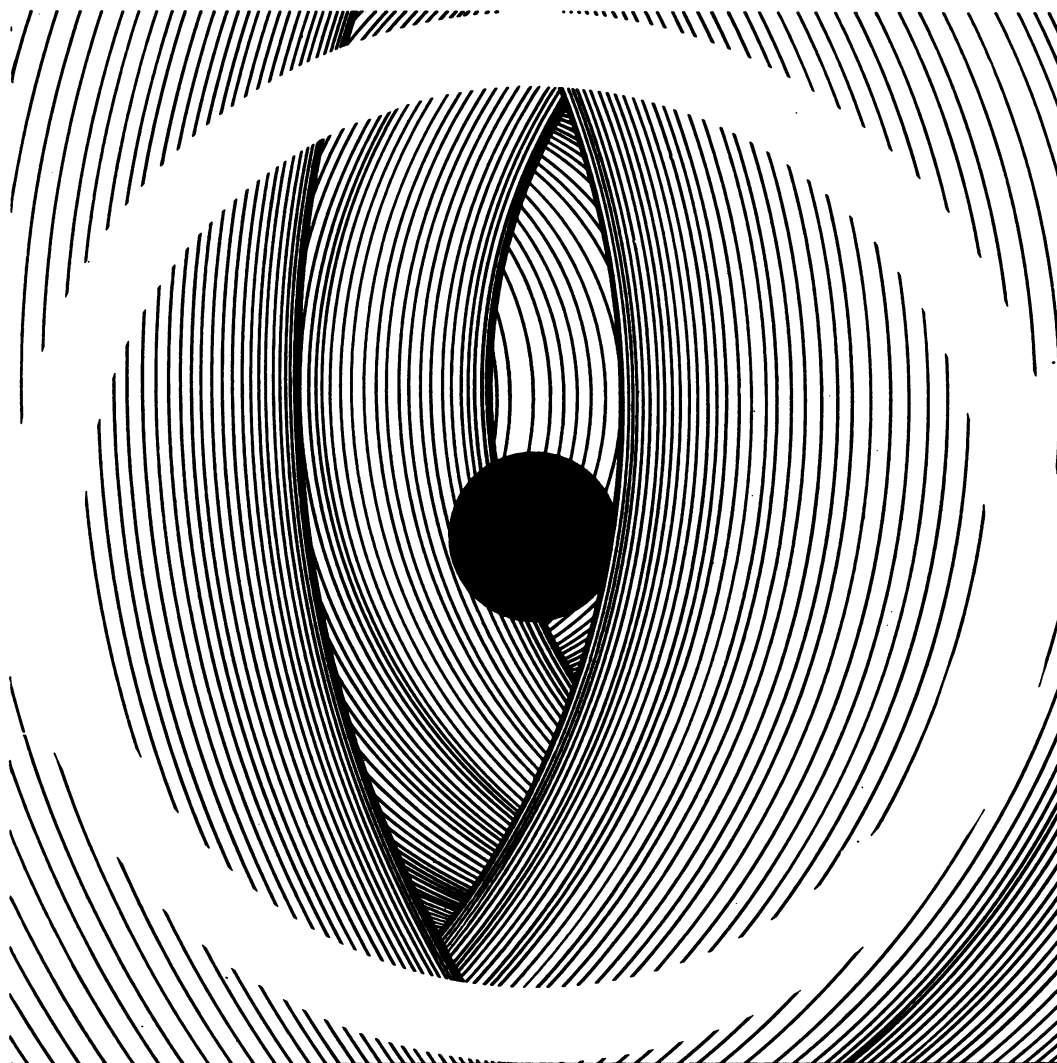
SOLPRIN is not advertised to the public and is available only on prescription. Clinical samples and literature will be supplied on request.

## SOLPRIN

REGD.

*Soluble and substantially neutral*

RECKITT & SONS LIMITED, PHARMACEUTICAL DEPARTMENT, HULL.



## Power to control a wide variety of intestinal infections

*High antibacterial and antiamoebic activity combined with low oral toxicity makes HUMATIN unique among antibiotics for the treatment of a variety of intestinal infections. It is of particular value in the treatment of diarrhoea and dysentery whether bacillary or non-specific in origin. Oral doses of Humatin are not absorbed so that problems of systemic toxicity do not arise.*

*HUMATIN is also indicated in all phases of intestinal amoebiasis, in the management of hepatic coma and in pre-operative suppression of intestinal flora.*

AVAILABLE AS HUMATIN KAPSEALS (paromomycin Parke-Davis) each containing paromomycin sulphate equivalent to 250 mg. paromomycin base. In bottles of 16 and 100.

HUMATIN SYRUP in bottles of 60 ml. and 500 ml. containing in each 5 ml. paromomycin sulphate equivalent to 125 mg. paromomycin base. \*TRADE MARK.

# humatin

UNIQUELY VERSATILE ANTIBIOTIC AND AMOEBICIDE

**PARKE-DAVIS**

PARKE, DAVIS & COMPANY · HOUNSLOW · MIDDX · TEL: HOUNSLOW 2361

# 'ALUHYDE'

REGD.

for prompt, safe symptomatic medication in  
hyperchlorhydria and peptic ulcer

'ALUHYDE' tablets present a new combination with these advantages...

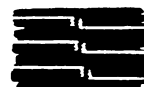
'ALUHYDE' effects safe, reliable, non-systemic neutralization by means of two of the most preferred modern antacid adsorbents...



'ALUHYDE' permits of quick mental sedative-effect by its inclusion of a barbiturate recognized for minimal cumulative potential...



'ALUHYDE' provides antispasmodic action through its content of an agent long known for its favourable influence against hypermotility...



Formula—

Each tablet: Dried Aluminium Hydroxide Gel. B.P.C.	-	3.75 gr.
Magnesium trisilicate B.P.	-	3.75 gr.
Quinalbarbitone sodium B.P.	-	0.50 gr.
Tinct. Belladonnæ B.P.	-	3 m.

Packings—Regular packs of 50; bottles of 500 (dispensing)

*Samples available on personally signed request  
of qualified physicians only*

**MULTIPAX CHEMICALS LTD**

121 NORWOOD ROAD, LONDON, S.E.24

Phone : TULse Hill 3276



IA53

## NEW BLACKWELL BOOKS

### DISEASES OF THE LIVER AND BILIARY SYSTEM

SHEILA SHERLOCK, M.D., F.R.C.P.(Edin.), F.R.C.P.(Lond.). *Third Edition*, August 1963.

760 pages, 220 illustrations. About 70s.

The second edition of this now standard textbook was described by *The Practitioner* as 'well written, pleasingly produced, and certainly the most readable and reliable book on this subject in the English language'. Professor Sherlock has revised her text throughout, and has added a great deal of new material.

### DISEASES OF THE DIGESTIVE SYSTEM

S. C. TRUELOVE, M.A., M.D., F.R.C.P. and P. C. REYNELL, M.A., D.M., F.R.C.P.

July 1963. 632 pages, 205 illustrations. About 70s.

The purpose of this new book is to present the more important aspects of diseases of the digestive system in a compact and readable form. It is meant primarily for senior students who wish to learn more than is contained in the ordinary general textbook of medicine, and for young doctors with a budding interest in gastroenterology.

### PROTEIN-LOSING GASTROENTEROPATHY

STIG JARNUM, M.D. June, 1963. 248 pages, 22 illustrations. About 30s.

The relationship between the digestive tract and the metabolism of plasma proteins is attracting particular interest after the recent demonstration that even in the normal organism plasma proteins 'leak out' into the stomach and the small intestine. Dr. Jarnum has made a special study of this subject, and his book is the most comprehensive account yet published.

### CLINICAL GASTROENTEROLOGY

F. AVERY JONES, M.D., F.R.C.P. and J. W. P. GUMMER, M.S., F.R.C.S. *Second Edition in Preparation*. About 84s. A revised edition of this outstanding textbook should be ready towards the end of 1963.

### CLINICAL AMOEBIASIS

A. J. WILMOT, D.M., M.R.C.P. 1962. 176 pages, 22 illustrations. 30s.

'Dr. Wilmot is to be congratulated on having produced an easily read, comprehensive, well-balanced and authoritative work on this very important subject.'—*British Medical Journal*.

BLACKWELL SCIENTIFIC PUBLICATIONS · OXFORD

## ANTIBIOTIC-INDUCED DIARRHOEA\*

There is good evidence in continental literature, for which further confirmation is being sought in this country, that this troublesome complication of broad-spectrum antibiotic treatment can be relieved or prevented by administering living antibiotic-resistant *Lactobacillus acidophilus* in the form of ENPAC.

The lactobacilli can be shown to establish themselves and multiply in the bowel, and their presence is inimical to that of pathogens, including, according to some reports, *Salmonella* species, and to *Candida* and staphylococci.

"Patients in hospital who have had an operation, and a course of 'broad-spectrum' antibiotics, sometimes develop diarrhoea which may be severe and even fatal."—*Lancet* Annotations, 25th February, 1961.



ENPAC

### LACTOBACILLUS ACIDOPHILUS PREPARATION

Samples and literature will be sent to the medical profession on request to:—

WILTS UNITED DAIRIES LIMITED · NUTRITION DEPARTMENT · TROWBRIDGE · WILTS

# RECOMMENDED READING FOR GASTRO- ENTEROLOGISTS

## GASTRO-INTESTINAL PHYSIOLOGY

By

**D. F. MAGEE,**  
M.A., B.M., B.Ch.(Oxon), Ph.D.

*Associate Professor of Pharmacology  
University of Washington  
Seattle, Washington*

Gathered from widely scattered *physiological, biochemical, and clinical literature* . . . the first concise summary of current gastro-intestinal physiology.

Each chapter includes a brief outline of the *histology and anatomy* of the organ under consideration insofar as this is necessary to an understanding of the physiology which follows . . .

- *The Mouth and Saliva*
- *Swallowing and the Esophagus*
- *Stomach and Its Secretions*
- *The Biliary Tract and Bile*
- *Pancreas*
- *The Secretion of the Small Intestine*
- *Intestinal Motility*
- *Gastric Motility*
- *Absorption*
- *Hunger and Thirst*
- *The Large Intestine and Defecation*

"Altogether Dr. Magee has produced a book which one can recommend to students as well as to practitioners as being **accurate, comprehensive and readable.**"—*Gastroenterology*

June 1962  
\$11.50

236 pages  
133 illustrations

## THE LOWER ESOPHAGEAL VESTIBULAR COMPLEX

By

**COSTANTINO ZAINO, M.D., F.A.C.R.**  
*Associate Clinical Professor of Radiology  
New York University Medical Center*

**MAXWELL H. POPPEL,**  
M.D., F.A.C.R.  
*Professor and Chairman, Department of  
Radiology, New York University  
Medical Center*

**HAROLD G. JACOBSON,**  
M.D., F.A.C.R.  
*Professor of Clinical Radiology  
New York University Medical Center*

**HAROLD LEPOW, M.D., F.C.A.P.**  
*Visiting Assistant Professor of Pathology  
Albert Einstein College of Medicine*

*All of New York City*

To explain hitherto controversial aspects concerning the *anatomy, physiology, pathology and roentgen findings* of the lower esophagus, Doctor Zaino and his coauthors have reinvestigated this area in terms of basic anatomy . . . relating these findings to normal and abnormal roentgen images.

In preparing the roentgen images both standard and special roentgenologic methods were used including cineradiography, tomography, pneumoperitoneum, biplane Schonander studies, and roentgen demonstration of the esophageal hiatus following surgical implantation of silver clips.

April 1963  
\$12.75

288 pages  
137 figures

**CHARLES C THOMAS · PUBLISHER**  
301-327 East Lawrence Avenue  
Springfield · Illinois · U.S.A.