

PAPERS

Complete and incomplete intestinal metaplasia at the oesophagogastric junction: prevalences and associations with endoscopic erosive oesophagitis and gastritis

M Voutilainen, M Färkkilä, M Juhola, J-P Mecklin, P Sipponen, and The Central Finland Endoscopy Study Group

Abstract

Background/Aims—Intestinal metaplasia (IM) is a common finding at the oesophagogastric junction, but the aetiopathogenesis of the different IM subtypes—that is, incomplete IM (specialised columnar epithelium, SCE) and complete IM—and their associations with gastro-oesophageal reflux disease and *Helicobacter pylori* gastritis are unclear.

Methods—1058 consecutive dyspeptic patients undergoing gastroscopy were enrolled. The gastric, oesophagogastric junctional, and oesophageal biopsy specimens obtained were stained with haematoxylin and eosin, alcian blue (pH 2.5)-periodic acid Schiff, and modified Giemsa.

Results—Complete junctional IM was detected in 196 (19%) of the 1058 subjects, and in 134 (13%) was the sole IM subtype. Incomplete junctional IM (SCE) was detected in 101 (10%) subjects, of whom 62 (61%) also had the complete IM subtype. Of patients with normal gastric histology (n = 426), 6% had complete IM and 7% junctional SCE. The prevalence of both types of IM increased with age in patients with either normal gastric histology or chronic gastritis (n = 611). Epithelial dysplasia was not detected in any patients with junctional IM. In multivariate analysis, independent risk factors for incomplete junctional IM were age (odds ratio (OR) 1.3 per decade, 95% confidence interval (CI) 1.2 to 1.6), endoscopic erosive oesophagitis (OR 1.9, 95% CI 1.1 to 3.2), and chronic cardia inflammation (OR 2.9, 95% CI 1.3 to 6.2), but not gastric *H pylori* infection (OR 1.0, 95% CI 0.6 to 1.7). In univariate analysis, junctional incomplete IM was not associated with cardia *H pylori* infection. Independent risk factors for “pure” complete junctional IM (n = 134) were age (OR 1.2 per decade, 95% CI 1.0 to 1.4), antral predominant non-atrophic gastritis (OR 2.6, 95% CI 1.3 to 5.2), antral predominant

atrophic gastritis (OR 2.1, 95% CI 1.1 to 5.2), and multifocal atrophic gastritis (OR 7.1, 95% CI 2.5 to 19.8). In univariate analysis, junctional complete IM was strongly associated with chronic cardia inflammation and cardia *H pylori* infection (p<0.001).

Conclusions—Both complete and incomplete junctional IM are independent acquired lesions that increase in prevalence with age. Although IM subtypes often occur simultaneously, they show remarkable differences in their associations with gastritis and erosive oesophagitis: junctional complete IM is a manifestation of multifocal atrophic gastritis, while the incomplete form (SCE) may result from carditis and gastro-oesophageal reflux disease. The frequency of dysplasia in intestinal metaplasia at the oesophagogastric junction appears to be low.

(Gut 1999;45:644-648)

Keywords: intestinal metaplasia; oesophagogastric junction; oesophagitis; gastritis; gastro-oesophageal reflux disease; *Helicobacter pylori*

Intestinal metaplasia (IM) is commonly detected in random biopsy specimens taken immediately distal to the normally located squamocolumnar junction.¹⁻⁶ IM at the oesophagogastric junction is a topic of great interest, because it may aetiopathogenetically be linked to the adenocarcinoma at this location.⁷ The incidence of this carcinoma has increased at a rate exceeding that of any other cancer.⁸ Whether IM at the oesophagogastric junction is a consequence of gastro-oesophageal reflux disease or a manifestation of multifocal gastritis caused by *Helicobacter pylori* is unclear.

IM is histopathologically divided into three subgroups based on the mucin content of the columnar-type and goblet cells.⁹⁻¹⁰ In the complete form of IM (type I), the columnar cells

Abbreviations used in this paper: IM, intestinal metaplasia; SCE, specialised columnar epithelium.

Department of
Medicine, Jyväskylä
Central Hospital,
Jyväskylä, Finland
M Voutilainen

Department of
Pathology, Jyväskylä
Central Hospital,
Jyväskylä, Finland
M Juhola

Department of
Surgery, Jyväskylä
Central Hospital,
Jyväskylä, Finland
J-P Mecklin

Division of
Gastroenterology,
Department of
Medicine, Helsinki
University Hospital,
Helsinki, Finland
M Färkkilä

Department of
Pathology, Jorvi
Hospital, Espoo,
Finland
P Sipponen

Correspondence to:
Dr M Voutilainen, Jyväskylä
Central Hospital,
Keskussairaalaantie 19,
FIN-40620 Jyväskylä,
Finland.

Accepted for publication
11 May 1999

are absorptive and contain neutral mucins, whereas in the incomplete forms of IM, they are at least partly secretory and contain acidic sialomucins (type II) or sulphomucins (type III).^{10, 11} IM types II and III are commonly referred to as incomplete IM or specialised columnar epithelium (SCE) and are easily recognised with simple histochemical stains such as alcian blue (pH 2.5)-periodic acid Schiff.¹² SCE is the histological hallmark of Barrett's oesophagus.¹²

This study set out to examine the prevalences and demographics of complete IM and SCE at the oesophagogastric junction in a large consecutive series of dyspeptic patients sent for open access gastroscopy. We wanted to evaluate the associations between these IM subtypes and gastritis, *H pylori* infection, and endoscopic and histological signs of gastro-oesophageal reflux disease, as well as the extent to which junctional complete IM and SCE are similar or dissimilar in these associations.

Methods

PATIENTS

The study population totalled 1698 consecutive dyspeptic patients sent for gastroscopy over a four month period. The patients with classical Barrett's oesophagus—that is, SCE detected above the oesophagogastric junction (n = 28)—were excluded. Patients for whom no adequate gastric antral, corpus, and oesophagogastric junctional biopsy specimens were available were also excluded, leaving a final study population of 1058 patients.

ENDOSCOPY

Two biopsy specimens were obtained from the gastric antrum 2 cm or more from the pylorus, and two others from the large curve of the gastric body, the oesophagogastric junction, and the distal oesophagus 2 cm or more above the junction (eight samples in all).

The oesophagogastric junctional biopsy specimens were obtained by first identifying the junction between the oesophagus and stomach at the level of the proximal end of the gastric folds.^{13, 14} The normal squamocolumnar mucosal junction, or Z line, is coincident with the aforementioned junction.¹⁴ In this report, junctional IM denotes the IM detected in biopsy specimens obtained immediately distal

to normal appearing Z line. Junctional biopsy specimens were obtained under direct vision with the gastroscope in antegrade position. If gastric type mucosa extended circumferentially or as tongues above the oesophagogastric junction, biopsy specimens were taken separately from this mucosa to detect Barrett's oesophagus. Subjects with Barrett's oesophagus or incomplete IM detected in the oesophagus were excluded from the present analysis.

Subjects with endoscopic oesophagitis grades II-IV by Savary-Miller classification¹⁵ were classified as having erosive oesophagitis.

HISTOLOGY

Formalin fixed biopsy samples were embedded in paraffin wax, and tissue sections stained with haematoxylin-eosin, alcian blue (pH 2.5)-periodic acid Schiff, and modified Giemsa. The presence of gastritis, activity of gastritis, gastric gland atrophy, IM, and *H pylori* infection were classified according to the Sydney System.¹⁶ Chronic gastritis subtypes were classified as follows: 1, normal gastric histology; 2, antral predominant gastritis (inflammation or inflammatory activity more severe in the gastric antrum than in the corpus, but no gastric gland atrophy); 3, antral predominant atrophic gastritis (gastric gland atrophy detected in the antrum but not the corpus); 4, corpus predominant gastritis (gastric gland atrophy detected only in the corpus or non-atrophic gastritis with more severe inflammation or inflammatory activity in the corpus); 5, multifocal atrophic gastritis (gastritis with atrophy detected in both the antrum and corpus).

The presence of complete and/or incomplete IM, chronic inflammation, and *H pylori* infection in the cardia was evaluated in junctional biopsy specimens. Only cases showing typical mucus secreting glandular gastric cardia epithelium¹⁷ were included in this study. Chronic cardia inflammation was defined as infiltration of the lamina propria by lymphocytes and plasma cells.¹⁸ Complete IM was defined as the presence of goblet cells without acidic alcian blue (pH 2.5)-periodic acid Schiff positive material in columnar-type cells.¹⁹ Incomplete IM or SCE was defined as the presence of goblet cells, with acidic mucins in goblet and adjacent columnar-appearing cells.^{19, 20} Figure 1 shows examples of complete

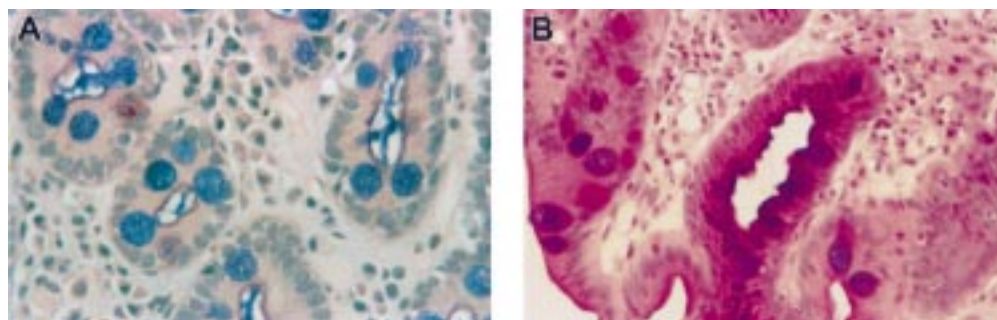


Figure 1 Complete intestinal metaplasia (IM) is characterised by goblet cells stained red or blue by alcian blue (pH 2.5)-periodic acid Schiff stain and by the presence of absorptive non-goblet cells (A). Incomplete IM or specialised columnar epithelium is differentiated from the complete IM subtype by the presence of goblet cells intermixed with mucin-secreting columnar-appearing non-goblet cells staining red and blue by the alcian blue (pH 2.5)-periodic acid Schiff stain (B).

and incomplete forms of metaplasia. Dysplasia, when present and definite, was graded as low grade or high grade.¹² The study population was divided into three groups according to the histological findings at the oesophago-gastric junction: group 1, patients with only complete type junctional IM; group 2, patients with SCE

or incomplete junctional IM (61% of them also had complete IM); group 3, control subjects without either type of IM.

Microscopic oesophagitis was defined as papillae extending into the upper third of the oesophageal mucosa with or without the infiltration of inflammatory cells.⁸

Table 1 Demographic, endoscopic, and histological characteristics of patients with junctional complete or incomplete intestinal metaplasia (IM) compared with those of the control group without these lesions

	Junctional complete IM (%) (n=134)	Junctional incomplete IM (%) (n=101)	Non-IM group (%) (n=823)
Mean (95% CI) age (y)	65.0 (62.5 to 67.4)	65.3 (62.8 to 67.7)	54.9 (53.8 to 56.1)
Male:female	1:1.5	1:1.2	1:1.5
Reflux symptoms	17 (11–24)	14 (7–21)	14 (13–17)
NSAID use	21 (14–28)	28 (19–37)	22 (19–25)
Smoking	21 (7–42)	26 (17–36)	19 (13–29)
Endoscopic erosive oesophagitis	13 (7–18)	22 (14–30)**	13 (11–15)
Hiatal hernia	10 (2–27)	25 (14–40)	18 (14–22)
Histological oesophagitis	27 (19–34)	21 (13–29)	26 (23–29)
Gastric <i>H. pylori</i> infection	55 (47–64)**	52 (42–61)*	39 (36–42)
Carditis	87 (82–93)***	92 (85–97)***	73 (70–76)
Cardiac <i>H. pylori</i> infection	38 (30–46)***	32 (23–41)	24 (21–27)

Smoking and hiatal hernia were analysed only for a subgroup. *Helicobacter pylori* was diagnosed histologically. “Carditis” is chronic inflammation in histologically verified gastric cardiac mucosa. *p<0.05, **p<0.01, ***p<0.001 compared with non-IM group. CI, confidence interval; NSAID, non-steroidal anti-inflammatory drug.

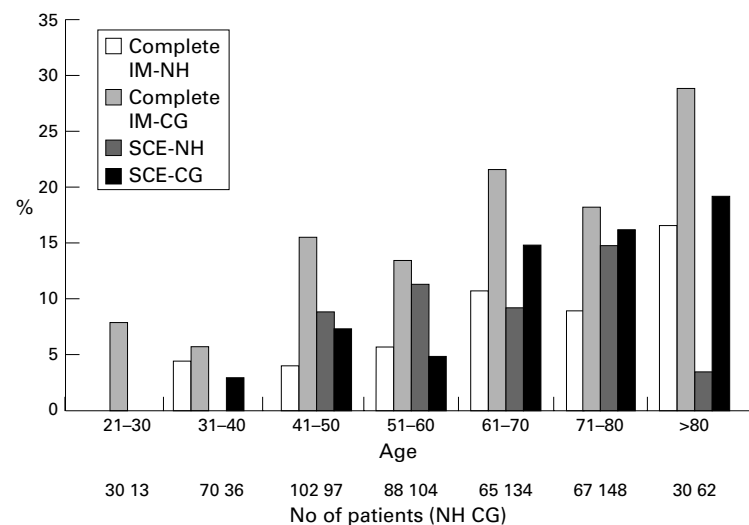


Figure 2 Prevalences of junctional complete and incomplete (specialised columnar epithelium, SCE) intestinal metaplasia (IM) in different age groups. NH, normal gastric histology (n = 426); CG, chronic gastritis (n = 632). The correlation of age with both IM types was significant in the CG (p<0.001 for complete IM and incomplete IM) and NH (p = 0.001 for complete IM and p = 0.002 for incomplete IM) group.

Table 2 The prevalences of oesophago-gastric junctional complete and incomplete intestinal metaplasia (IM) in different types of gastritis

	Junctional complete IM (n=134)	Junctional incomplete IM (n=101)
Normal gastric histology (n=417)†	24 (18; 11 to 24)	29 (29; 20 to 38)*
Antral predominant non-atrophic gastritis (n=421, 78% <i>H. pylori</i> positive)‡	60 (45; 36 to 53)	40 (40; 30 to 49)
Antral predominant atrophic gastritis (n=86, 81% <i>H. pylori</i> positive)	18 (13; 8 to 19)	20 (20; 12 to 28)
Corpus predominant atrophic gastritis (n=75, 26% <i>H. pylori</i> positive)	17 (13; 7 to 18)	10 (10; 5 to 17)
Multifocal atrophic gastritis (n=360, 57% <i>H. pylori</i> positive)	15 (11; 6 to 17)**	2 (2; 0 to 7)
Chronic gastritis, all types (n=618, 71% <i>H. pylori</i> positive)	110 (82; 76 to 89)*	72 (71; 63 to 80)

Values in parentheses are percentage with 95 confidence interval of the total amount of the IM subtype.

Within each type of gastritis, the prevalences of IM subtypes were compared with each other using the rest of study population with junctional IM as reference group (χ^2 test).

†Total number of patients

‡Prevalence rates from histological examination

*p=0.05, **p=0.007.

STATISTICAL ANALYSIS

χ^2 and Mann-Whitney U tests were used to compare groups, and p<0.05 was considered as significant. Multiple logistic regression analysis was used to assess the relations between complete or incomplete IM and factors with a significant difference in prevalence in univariate analysis when the two groups were compared with the control group without these lesions. Odds ratios (OR) with their 95% confidence intervals (95% CI) are reported for independent risk factors for the complete and incomplete IM forms.

ETHICS

This study was approved by the ethics committee of Jyväskylä Central Hospital.

Results

The study population consisted of 1058 patients (mean age 57.3 years, 95% CI 56.3 to 58.3 and male to female ratio 1:1.5), of whom 134 (13%) had complete IM and 39 (4%) incomplete IM (SCE) as the sole type of IM at the oesophago-gastric junction. The mean age of the “pure” complete IM group was 65.0 (95% CI 62.5 to 67.4) years and that of the “pure” incomplete IM group 62.9 (95% CI 58.5 to 67.3) years. A total of 62 patients harboured both types of IM simultaneously, giving overall prevalence for complete IM of 19% (n = 196), and for incomplete IM or SCE of 10% (n = 101). Henceforth patients with complete IM denotes the patients with this type of IM only (n = 134), whereas the incomplete IM or SCE group refers to patients with SCE only plus those with complete IM as well as SCE (n = 101).

The patients with complete or incomplete IM were older than those without either lesion (table 1, both patients with chronic gastritis and normal stomach included). In subjects with normal stomach, the mean age of the non-IM-non-SCE group was 50.8 (95% CI 48.4 to 53.2) years, that of the junctional complete IM group 62.4 (95% CI 56.3 to 68.5) years, (p = 0.001), and that of the junctional SCE group 54.0 (95% CI 46.3 to 61.7) years (p = 0.003). The difference in mean age between the complete IM and SCE group was insignificant (p = 0.1). Both types of junctional IM correlated with age in patients with normal gastric histology or with chronic gastritis (fig 2). The sex ratios of patients with either type of junctional IM were not significantly different from that of the control group. In patients with multifocal atrophic gastritis, complete junctional IM was significantly more common than incomplete junctional IM (table 2). On the other hand, in patients with histologically normal stomach, junctional incomplete IM was more common than complete IM, although the

Table 3 Results of multivariate analyses to determine the independent risk factors for junctional complete and incomplete intestinal metaplasia

	Odds ratio (95% confidence interval)
Complete junctional intestinal metaplasia	
Age	1.2 (1.0 to 1.4)
“Carditis”	1.2 (0.6 to 2.2)
Cardia <i>H pylori</i>	1.8 (0.9 to 3.8)
Gastric <i>H pylori</i>	0.7 (0.3 to 1.4)
Antral predominant non-atrophic gastritis	2.6 (1.3 to 5.2)
Antral predominant atrophic gastritis	2.1 (1.1 to 5.2)
Corpus predominant (atrophic) gastritis	1.0 (0.5 to 2.2)
Multifocal atrophic gastritis	7.1 (2.5 to 19.8)
Incomplete junctional intestinal metaplasia	
Age	1.3 (1.2 to 1.6)
Endoscopic erosive oesophagitis	1.9 (1.1 to 3.2)
“Carditis”	2.9 (1.3 to 6.2)
Antral predominant non-atrophic gastritis	1.4 (0.9 to 2.4)
Gastric <i>H pylori</i>	1.0 (0.6 to 1.7)

Age is given per decade.

difference did not reach statistical significance (table 2). Junctional epithelial dysplasia was not observed in any patient with complete or incomplete junctional IM.

Reflux symptoms, smoking habits, or the use of non-steroidal anti-inflammatory drugs did not correlate with the presence of either type of IM (table 1). Hiatal hernia or histological oesophagitis did not predict the presence of junctional IM of either type.

Multivariate analysis showed that age, antral predominant non-atrophic gastritis, antral predominant atrophic, and multifocal atrophic gastritis were independent risk factors for “pure” complete junctional IM (table 3). Independent risk factors for junctional SCE were age, endoscopic erosive oesophagitis, and chronic cardia inflammation (“carditis”) (table 3).

Discussion

This study showed complete and incomplete IM to be common findings at the oesophago-gastric junction in a consecutive series of dyspeptic patients: almost a quarter of our study population had either or both forms of the lesion. Previously reported prevalence rates varied from 5.3 to 36%.^{2-4 6 21 22} The width of this range may be due to patient selection or to different methods of biopsy sampling or staining for histology. Haematoxylin-eosin stain yields lower IM rates than the simultaneous application of alcian blue (pH 2.5)-periodic acid Schiff, which also enables differentiation between complete and incomplete IM.^{6 19 20 23}

The prevalence of junctional complete IM and SCE at the oesophago-gastric junction increased with age, and both IM subtypes were also found in patients without concomitant gastritis, indicating that junctional IM and SCE are acquired local lesions. Complete IM and SCE seemed to occur in men and women at similar frequencies, contrasting with Barrett’s oesophagus and oesophago-gastric junctional adenocarcinomas which are strongly male predominant diseases.^{12 24 25}

An important finding was that, in multivariate analysis, endoscopic erosive oesophagitis, but not *H pylori* infection or antral predominant gastritis, was an independent risk factor for junctional SCE. In contrast, complete junc-

tional IM was associated with gastritis, and particularly with multifocal atrophic gastritis, but not with endoscopic erosive oesophagitis. These observations suggest that at least some subjects with junctional SCE suffer this lesion as a consequence of gastro-oesophageal reflux disease, while complete junctional IM is a manifestation of multifocal atrophic gastritis and *H pylori* infection. However, in patients with normal stomach, complete junctional IM may result from gastro-oesophageal reflux disease, because this IM subtype was detected in 6% of this subgroup.

In the stomach, IM represents a sequence of progressive lesions from complete (type I or “small bowel type IM”) to incomplete (types II and III or “colonic type IM”) IM.^{26 27} This may also be the case with IM at the oesophago-gastric junction. However, this hypothesis was not supported by the finding that junctional complete IM and SCE were detected at a similar age in subjects with normal gastric histology. Proper and correct analysis of the background factors for junctional IM subtypes is difficult because obviously there are varying degrees of overlap with regard to the pathogenic factors for junctional complete IM and SCE.

The present findings suggest important clinical and practical conclusions on junctional SCE: the presence of SCE at the oesophago-gastric junction in subjects with a normal stomach—that is, histologically normal antral and gastric corpus mucosa—may predict gastro-oesophageal reflux disease with high certainty. This could also apply to junctional SCE patients with chronic gastritis. The presence of complete junctional IM may not indicate reflux, but is a manifestation of multifocal atrophic gastritis. These conclusions are concordant with an earlier study indicating that junctional SCE is related to gastro-oesophageal reflux disease detected by 24 hour oesophageal pH monitoring.²⁸

In this study, none of the patients with junctional IM showed dysplasia, which accords with an earlier report.⁵ Dysplasia is quite a common finding at Barrett’s epithelium and precedes the appearance of adenocarcinoma.¹² This may also be the case in the adenocarcinomas of the oesophago-gastric junction, which are on the increase in many western countries.^{24 25 29} The low rate of dysplasias in junctional IM suggests that neither junctional SCE nor complete IM are as high risk carcinoma precursor lesions as Barrett’s oesophagus is for oesophageal adenocarcinoma. On the other hand, junctional complete IM and SCE are common lesions, and the absence of dysplasia in a limited number of patients does not exclude the possibility that junctional SCE or complete IM could progress to dysplasia and carcinoma in some patients.

In conclusion, this study indicates that complete and incomplete IM at the oesophago-gastric junction are common acquired lesions. They may not be directly related to Barrett’s oesophagus or junctional adenocarcinomas because of the differences in their basic demographics. It seems that incomplete junctional IM (SCE) and complete IM are dissimilar

lesions in terms of their pathogenesis: the former seems to be a consequence of gastro-oesophageal reflux disease and the latter a manifestation of multifocal atrophic gastritis.

In addition to the authors, the following doctors are members of The Central Finland Endoscopy Study Group: Liisa Ahlskog-Muraja, Teuvo Antikainen, Sirpa Antila, Jorma Anttinen, Matti Hallikas, Kari-Pekka Hämäläinen, Heikki Janhonen, Matti Kairaluoma, Kerko Karjalainen, Pekka Kauranen, Matti Kolu, Heikki Korhonen, Jari Korhonen, Ritva Koskela, Raimo Krees, Ilkka Kunnamo, Vesa Kärjä, Päivi Laaksonen, Matti Laukkanen, Reino Liisanantti, Marja Lohman, Timo Mäntynen, Kyösti Nuorva, Antero Palmu, Ulla Palmu, Matti Pellinen, Pertti Särkkä, Harri Selänne, Tuula Tervo, Marianne Udd, Jukka Viinikka.

- 1 Genta RM, Huberman RM, Graham DY. The gastric cardia in *Helicobacter pylori* infection. *Hum Pathol* 1994;25:915–19.
- 2 Spechler SJ, Zerogian JM, Antonioli DA, et al. Prevalence of metaplasia at the gastro-oesophageal junction. *Lancet* 1994;344:1533–6.
- 3 Johnston MH, Hammond AS, Laskin WL, et al. The prevalence and clinical characteristics of short segments of specialized intestinal metaplasia in the distal esophagus on routine endoscopy. *Am J Gastroenterol* 1996;91:1507–11.
- 4 Weston AP, Krmpotic P, Makdisi WF, et al. Short segment Barrett's esophagus: clinical and histological features, associated endoscopic findings, and association with gastric intestinal metaplasia. *Am J Gastroenterol* 1996;91:981–6.
- 5 Morales TG, Sampliner RE, Bhattacharyya A. Intestinal metaplasia of the gastric cardia. *Am J Gastroenterol* 1997;92:414–18.
- 6 Nandurkar S, Talley NJ, Martin CJ, et al. Short segment Barrett's esophagus: prevalence, diagnosis and associations. *Gut* 1997;40:710–15.
- 7 Cameron AJ, Lomboy CT, Pera M, et al. Adenocarcinoma of the esophagogastric junction and Barrett's esophagus. *Gastroenterology* 1995;109:1541–6.
- 8 Fuchs CS, Mayer RJ. Gastric carcinoma. *N Engl J Med* 1995;333:32–9.
- 9 Jass JR. Role of intestinal metaplasia in the histogenesis of gastric carcinoma. *J Clin Pathol* 1980;33:801–10.
- 10 Filipe MI, Potet F, Bogomoletz WV, et al. Incomplete sulphomucin-secreting intestinal metaplasia for gastric cancer. Preliminary data from a prospective study from three centres. *Gut* 1985;26:1319–26.
- 11 Shah KA, Deacon AJ, Dunscombe P, et al. Intestinal metaplasia subtyping: evaluation of Gomori's aldehyde fuchsin for routine diagnostic use. *Histopathology* 1997;31:277–83.
- 12 Haggitt RC. Barrett's esophagus, dysplasia, and adenocarcinoma. *Hum Pathol* 1994;25:982–93.
- 13 McClave SA, Boyce Jr HW, Gottfried MR. Early diagnosis of columnar-lined esophagus: a new endoscopic criterion. *Gastrointest Endosc* 1987;33:413–16.
- 14 Tytgat GNJ, Hameeteman W, Onstenk R, et al. The spectrum of columnar-lined esophagus: Barrett's esophagus. *Endoscopy* 1989;21:177–85.
- 15 Savary M, Miller G, eds. *The esophagus. Handbook and atlas of endoscopy*. Solothurn, Switzerland: Gassman Verlag AG, 1978:135–9.
- 16 Price AB. The Sydney system: histological division. *J Gastroenterol Hepatol* 1991;6:209–22.
- 17 Owen DA. Normal histology of the stomach. *Am J Surg Pathol* 1986;10:48–61.
- 18 Riddell RH. The biopsy diagnosis of gastroesophageal reflux disease, "carditis," and Barrett's esophagus, and sequelae of therapy. *Am J Surg Pathol* 1996;20(suppl):S31–51.
- 19 Jauregui HO, Davessar K, Hale JH, et al. Mucin histochemistry of intestinal metaplasia in Barrett's esophagus. *Mod Pathol* 1988;1:188–92.
- 20 Gottfried MR, McClave SA, Boyce HW. Incomplete intestinal metaplasia in the diagnosis of columnar lined esophagus (Barrett's esophagus). *Am J Clin Pathol* 1989;92:741–6.
- 21 Hirota WK, Loughney TM, Lazas DJ, et al. The prevalence and demographics of specialized intestinal metaplasia at the esophagogastric junction in a cohort of 889 prospectively studied patients [abstract]. *Gastroenterology* 1997;112:A149.
- 22 Trudgill NJ, Suvarna SK, Kapur KC, et al. Intestinal metaplasia at the squamocolumnar junction in patients attending for diagnostic gastroscopy. *Gut* 1997;41:585–9.
- 23 Weinstein WM, Ippoliti AF. The diagnosis of Barrett's esophagus: goblets, goglets, goblets. *Gastrointest Endosc* 1996;44:91–5.
- 24 Blot WJ, DeVesa SS, Kneller RW, et al. Rising incidence of adenocarcinoma of the esophagus and gastric cardia. *JAMA* 1991;265:1287–9.
- 25 Pera M, Cameron AJ, Trastek VF, et al. Increasing incidence of adenocarcinoma of the esophagus and esophagogastric junction. *Gastroenterology* 1993;104:510–13.
- 26 Correa P. A human model of gastric carcinogenesis. *Cancer Res* 1988;48:3554–60.
- 27 Sipponen P, Seppälä K, Varis K, et al. Intestinal metaplasia with colonic type sulphomucins in the gastric mucosa. *Acta Pathologica Microbiologica Scandinavica Section A* 1976;23:276–9.
- 28 Öberg S, Peters JH, DeMeester TR, et al. Inflammation and specialized intestinal metaplasia of cardiac mucosa is a manifestation of gastroesophageal reflux disease. *Ann Surg* 1997;226:522–32.
- 29 Hansson L-E, Sparén P, Nyrén O. Increasing incidence of carcinoma of the gastric cardia in Sweden from 1970 to 1985. *Br J Surg* 1993;80:374–7.