




OPEN ACCESS

Original research

Association between *Brachyspira* and irritable bowel syndrome with diarrhoea

Karolina S Jabbar,^{1,2} Brendan Dolan,¹ Lisbeth Eklund,^{1,2} Catharina Wising,¹ Anna Ermund,¹ Åsa Johansson,¹ Hans Törnblom,^{2,3} Magnus Simren,^{2,3} Gunnar C Hansson ¹

► Additional material is published online only. To view, please visit the journal online (<http://dx.doi.org/10.1136/gutjnl-2020-321466>).

¹Department of Medical Biochemistry, Institute of Biomedicine, University of Gothenburg, Gothenburg, Sweden

²Department of Gastroenterology and Hepatology, Sahlgrenska University Hospital, Gothenburg, Sweden

³Department of Internal Medicine and Clinical Nutrition, Institute of Medicine, University of Gothenburg, Gothenburg, Sweden

Correspondence to

Dr Gunnar C Hansson, Dept. Medical Biochemistry, University of Gothenburg, Gothenburg 405 30, Sweden; gunnar.hansson@medkem.gu.se

MS and GCH are joint senior authors.

Received 17 April 2020

Revised 12 October 2020

Accepted 13 October 2020

Published Online First

11 November 2020



► <http://dx.doi.org/10.1136/gutjnl-2020-323370>



© Author(s) (or their employer(s)) 2021. Re-use permitted under CC BY-NC. No commercial re-use. See rights and permissions. Published by BMJ.

To cite: Jabbar KS, Dolan B, Eklund L, et al. *Gut* 2021;**70**:1117–1129.

ABSTRACT

Objective The incidence of IBS increases following enteric infections, suggesting a causative role for microbial imbalance. However, analyses of faecal microbiota have not demonstrated consistent alterations. Here, we used metaproteomics to investigate potential associations between mucus-resident microbiota and IBS symptoms.

Design Mucus samples were prospectively collected from sigmoid colon biopsies from patients with IBS and healthy volunteers, and their microbial protein composition analysed by mass spectrometry. Observations were verified by immunofluorescence, electron microscopy and real-time PCR, further confirmed in a second cohort, and correlated with comprehensive profiling of clinical characteristics and mucosal immune responses.

Results Metaproteomic analysis of colon mucus samples identified peptides from potentially pathogenic *Brachyspira* species in a subset of patients with IBS. Using multiple diagnostic methods, mucosal *Brachyspira* colonisation was detected in a total of 19/62 (31%) patients with IBS from two prospective cohorts, versus 0/31 healthy volunteers ($p < 0.001$). The prevalence of *Brachyspira* colonisation in IBS with diarrhoea (IBS-D) was 40% in both cohorts ($p = 0.02$ and $p = 0.006$ vs controls). *Brachyspira* attachment to the colonocyte apical membrane was observed in 20% of patients with IBS and associated with accelerated oro-anal transit, mild mucosal inflammation, mast cell activation and alterations of molecular pathways linked to bacterial uptake and ion–fluid homeostasis. Metronidazole treatment paradoxically promoted *Brachyspira* relocation into goblet cell secretory granules—possibly representing a novel bacterial strategy to evade antibiotics.

Conclusion Mucosal *Brachyspira* colonisation was significantly more common in IBS and associated with distinctive clinical, histological and molecular characteristics. Our observations suggest a role for *Brachyspira* in the pathogenesis of IBS, particularly IBS-D.

INTRODUCTION

The incidence of IBS steeply increases following a gastroenteritis episode, suggesting a possible causative role for microbial perturbation.¹ Still, previous investigations have not demonstrated consistent associations between intestinal microbiota and IBS symptoms.^{2,3}

Significance of this study

What is already known on this subject?

- IBS incidence increases after enteric infections, suggesting a possible causative role for microbial perturbation.
- Studies of the faecal microbiota have failed to demonstrate consistent alterations associated with IBS symptoms.

What are the new findings?

- This study represents the first comparison of the microbial community of the colonic inner mucus layer of patients with IBS and healthy volunteers.
- Colonisation of the colonic epithelial surface or mucus layers by pathogenic *Brachyspira* species was detected in 40% of patients with IBS with diarrhoea but not in any healthy individual.
- *Brachyspira*-associated IBS was linked to distinctive clinical, histological and molecular characteristics, suggesting that it should be considered a separate diagnostic entity.
- Treatment paradoxically resulted in relocation of the *Brachyspira* into goblet cell secretory granules.

How might it impact on clinical practice in the foreseeable future?

- The presence of *Brachyspira* may be used to identify a distinct subset of patients with IBS, who could potentially be responsive to eradication therapy.
- The relocation of the *Brachyspira* into goblet cell mucus granules likely represents a novel bacterial strategy to evade antibiotics, which could inform our understanding of other persistent or recurrent mucosal infections.

Gut microbiota composition studies overwhelmingly rely on faecal material. However, these samples largely reflect the luminal microbial community, which is spatially separated from the colonic epithelium and underlying immune cells through a two-tiered mucus barrier.⁴ By contrast, certain species have found a niche in the outer mucus layer, feeding on the abundant mucin O-glycans.⁵ Thus, faecal and mucus-associated bacteria represent distinctive populations, with the latter

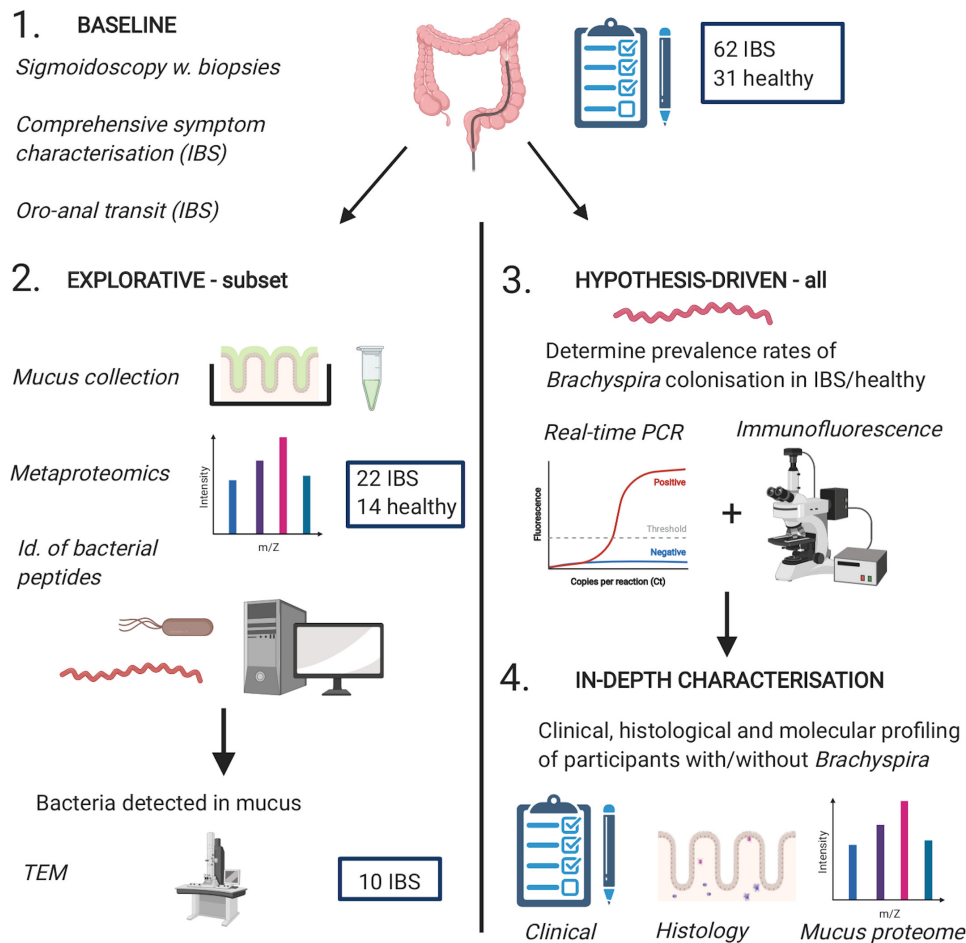


Figure 1 Graphical summary of the study design. Schematic representation of the different phases of the study. In-depth profiling of clinical, histological and molecular characteristics (phase 4) was performed in participants where *Brachyspira* colonisation could be confirmed/rejected with high confidence, typically based on consistent results from two different methods. Quantification of mucosal immune cells by histology was performed in a representative subset of participants with good-quality biopsy sections, whereas analysis of the human mucus proteome was largely restricted to participants from the explorative cohort. The figure was created with BioRender.com.

more likely to influence the epithelium. In particular, bacterial presence in the inner mucus layer might result in epithelial stress and immune activation. Here, we performed a metaproteomic analysis of inner mucus layer samples from patients with IBS and healthy individuals, to investigate potential associations between mucus-resident microbiota and IBS symptoms.

MATERIALS AND METHODS

Study design

Patients aged 18–65 years fulfilling the Rome III criteria for IBS were prospectively included at a secondary/tertiary care unit (Sahlgrenska Hospital, Gothenburg, Sweden) June 2012 through April 2018. Healthy volunteers were recruited through advertisements and screened by questionnaires and interviews to rule out gastrointestinal complaints and comorbidities. Exclusion criteria are listed in the online supplemental file. Patients with IBS were subtyped based on the Rome III criteria and the Bristol Stool Form scale, as follows: IBS with diarrhoea (IBS-D), IBS with constipation (IBS-C), IBS with mixed bowel habits (IBS-M) and unsubtyped IBS without diarrhoea or constipation (IBS-U). All participants provided written informed consent.

All study participants (IBS $n=62$, healthy $n=31$) underwent sigmoidoscopy with sampling of biopsies in methanol-Carnoy for future histology/immunohistochemistry and real-time PCR

analysis (figure 1). Carnoy's fixative enables optimal preservation of both the mucus layers and the tissue nucleic acids.⁶ Comprehensive clinical characterisation, including assessment of oro-anal transit time (OATT) and rectal sensitivity, was undertaken in patients with IBS.

In a randomly selected subset of participants (the *first/explorative* cohort, IBS $n=22$, healthy $n=14$), mucus was collected from ex vivo sigmoid colon biopsies and analysed by mass spectrometry (MS). The objectives of this explorative phase were twofold: to characterise the metaproteomic composition of the inner mucus layer of patients with IBS and healthy individuals, and to generate hypotheses to pursue in the entire study population. Patients in whose mucus/tissue samples bacteria were detected by MS ($n=9$), or, in certain cases, other methods ($n=3$), underwent repeat sigmoidoscopy, with biopsy sampling for electron microscopy, mucus collection and/or routine clinical histopathology.

The metaproteomic analysis identified a putative link between the *Brachyspira* genus and IBS. This association was validated in the *explorative cohort*, as well in the remainder of the study population—the second cohort, comprising 40 patients with IBS and 17 healthy individuals—using real-time PCR and immunofluorescence. Sampling and analysis were, whenever possible, performed with blinding to participant identity. Missing data

due to technical failures or suboptimal biopsy specimens are tabulated in online supplemental table S1.

Patient and public involvement statement

Patients were not involved in the planning, design or evaluation of this study.

Patient-reported symptoms

Participants recorded the frequency and Bristol scale consistency of their bowel movements in a 2-week structured diary. Patients with IBS completed the IBS Severity Scoring System (IBS-SSS) questionnaire as well as an Extracolonic Symptom Severity Score (online supplemental file).^{7,8}

Oro-anal transit time

OATs were assessed for 60/62 (97%) patients with IBS (online supplemental file).

Rectal sensitivity

Rectal sensitivity was evaluated in 45/62 (73%) patients with IBS, using an electronic barostat (online supplemental file).

Mucus collection

Sigmoidoscopy was performed without prior bowel preparation. Two biopsies per participant (explorative cohort n=36, second cohort n=4) were transported in oxygenated, ice-cold Krebs buffer, mounted in our in-house developed ex vivo mucus measurement chambers and allowed to secrete mucus for 1 hour.⁹ Mucus was then collected by gentle scraping (online supplemental figure S1). Since the outer, easily removable, mucus layer is lost during sampling and transport, sample microbial protein content was considered to reflect that of the inner mucus layer.

MS and data processing

Mucus samples were prepared for MS according to a modified version of the Filter-Aided Sample Preparation (FASP) protocol.¹⁰ Nano-liquid chromatography-tandem MS was performed on a Q-Exactive instrument (Thermo). Peptides were identified using the Andromeda search engine integrated into MaxQuant (V.1.3.0.5) and the MASCOT software (V.2.2).¹¹ Searches were performed against all reviewed human and eubacteria sequences of the SwissProt-UniProt database (February 2016). Minimum one unique peptide at a threshold of 1% was required for protein identification. The identification threshold for a bacterial family/genus was generally defined as ≥ 3 proteins, each identified by at least one unique, family/genus-specific peptide. Detailed information is provided in the online supplemental file.

Histology and immunohistochemistry

One biopsy per participant (both cohorts) was fixed in methanol-Carnoy, paraffin-embedded and sectioned. Tissue sections were stained with either H&E, Alcian blue/periodic acid-Schiff (AB-PAS), toluidine blue, Gram stain or with antibodies for fluorescent microscopy (online supplemental file). Lamina propria and subepithelial/intraepithelial immune cell populations were counted in five high-power fields in H&E or toluidine blue-stained sections by two to three independent observers.

Transmission electron microscopy

Transmission electron microscopy analysis of biopsies from 10 participants was performed as detailed in the online supplemental file.

DNA isolation and real-time PCR analysis

DNA was isolated from methanol-Carnoy-fixed, paraffin-embedded tissue as outlined in the online supplemental file. In certain participants, DNA was also isolated from fresh frozen biopsies and/or faecal material (online supplemental file). *Brachyspira* species were identified using a melting curve-based method.¹² To further validate our observations, a multiplex hydrolysis probe assay specific for *Brachyspira aalborgi/hominis* and *Brachyspira pilosicoli* was designed (online supplemental file).

16S rDNA sequencing

16S rDNA sequencing of faecal samples was performed as described in the online supplemental file.

Mucus penetrability analysis

Mucus penetrability was assessed by confocal microscopy, using fluorescent beads as surrogate markers for bacteria (online supplemental file).⁹

Antibiotic treatment—pilot study

The first four patients with IBS in the study to be diagnosed with epithelial *Brachyspira* colonisation/infection were treated with 500 mg metronidazole three times a day for 14 days.¹³ As the rationale for the treatment was clinical, the intervention was open-label and uncontrolled. Patients completed IBS-SSS questionnaires before treatment, and 2, 4, 6 and 8 weeks, as well as 6, 12 and 15 months after commencing antibiotics. They kept a diary of their bowel habits from 2 weeks before, until 8 weeks after, treatment, and also for 2 weeks at 6 and 12 months after metronidazole therapy, respectively. Patients underwent sigmoidoscopy with biopsy sampling for histology, immunohistochemistry and PCR 6 weeks post-treatment and collected faecal samples for probe-based PCR analysis 6 weeks, 6 months and 1 year after antibiotic therapy.

Statistics

Fisher's exact test was used for categorical data. For continuous data, Welch's t-test or the Mann-Whitney U test was used for two-group comparisons, depending on data distribution as verified by the Kolmogorov-Smirnov test. Kruskal-Wallis test was used for multigroup comparisons. P values are two-sided. The significance threshold (0.05) was adjusted according to the Bonferroni/Holm-Bonferroni methods in the event of multiple (>2) comparisons. Data was analysed with GraphPad Prism (V. 8).

RESULTS

Study population

A graphical summary of the study design is provided in figure 1. In an explorative cohort of 22 patients with IBS and 14 healthy controls, inner mucus layer samples were collected from sigmoid colon biopsies and analysed by metaproteomics, revealing a tentative link between *Brachyspira* and IBS. This association was confirmed through histology, electron microscopy, immunofluorescence and targeted real-time PCR analysis, and further investigated in a second cohort of 40 patients with IBS and 17 healthy individuals, using immunofluorescence and PCR. Clinical and

Table 1 The study cohorts

	First (explorative) cohort		Second cohort		Study population*	
	IBS patients	Controls	IBS patients	Controls	IBS patients	Controls
Participants	22	14	40	17	62	31
Females	15 (68%)	8 (57%)	33 (83%)	10 (59%)	48 (77%)	18 (58%)
Median age (range)	29 (22–55)	29 (23–49)	28 (20–62)	27 (19–55)	28 (20–62)	29 (19–55)
IBS-D	10 (45%)	NA	15 (38%)	NA	25 (40%)	NA
IBS-C	5 (23%)	NA	8 (20%)	NA	13 (21%)	NA
IBS-M	5 (23%)	NA	14 (35%)	NA	19 (31%)	NA
IBS-U	2 (9%)	NA	3 (8%)	NA	5 (8%)	NA
Mucus samples analysed by proteomics	22 (100%)	14 (100%)	3 (8%)	1 (6%)	25 (40%)	15 (48%)
Tissue sections analysed by immunofluorescence	19 (86%)	12 (86%)	37 (93%)	16 (94%)	56 (90%)	28 (90%)
Biopsies analysed by real-time PCR	18 (82%)	9 (64%)	36 (90%)	16 (94%)	54 (87%)	25 (81%)
Patients treated with metronidazole	3 (14%)	0	1 (3%)	0	4 (6%)	0

*Entire study population (both cohorts).

IBS-C, IBS with constipation; IBS-D, IBS with diarrhoea; IBS-M, IBS with mixed bowel habits; IBS-U, unsubtyped IBS without diarrhoea or constipation; NA, not applicable.

demographic characteristics of both cohorts are compiled in table 1. The number/proportion of individuals analysed by each method are summarised in table 1; participant-level data are provided in online supplemental data file S1. Missing data are tabulated in online supplemental table S1, stratified by IBS diagnosis and *Brachyspira* colonisation status. Demographic factors did not differ between patients with IBS and healthy individuals (table 1).

Bacterial proteins were more frequently detected in mucus from patients with IBS

Using stringent criteria, bacteria were identified in mucus from 9/22 (41%) patients with IBS and 1/14 (7%) healthy controls ($p=0.05$; online supplemental figure S2A). The most frequently identified bacterial family was Pseudomonadaceae (online supplemental figure S2B–D). Proteins from the Brachyspiraceae family, genus *Brachyspira* were detected in 3/22 (14%) patients with IBS but not in any controls (online supplemental figure S2C,D).

The *Brachyspira* genus includes putative human pathogens associated with intestinal spirochetosis. In this condition, tentatively linked to diarrhoea and abdominal pain, *Brachyspira* penetrates the mucus layers, frequently colonising the colonocyte apical membrane.^{12–15} Therefore, we focused our investigation on the potential link between *Brachyspira* and IBS. Numbers of identified peptides and proteins per family are compiled in online supplemental table S2 and *Brachyspira* peptide/protein identifications in online supplemental table S3.

Histology and immunohistochemistry confirmed proteomic *Brachyspira* identifications

In the three patients with proteomic *Brachyspira* identifications, spirochetes could be visualised at the apical membrane by AB-PAS staining (figure 2A,B). Transmission electron microscopy showed *Brachyspira* densely colonising the epithelial surface, attaching between the microvilli (figure 2C,D). These observations were further confirmed by immunofluorescent staining with *Brachyspira* antiserum (figure 2E).¹⁴ When the immunofluorescence analysis was extended to the entire explorative cohort, *Brachyspira* colonisation of the colonocyte membrane (membrane-associated spirochetosis) was detected in three additional patients with IBS. In other cases, *Brachyspira* was observed in the mucus, occasionally invading the inner layer

(figure 2F). By contrast, all healthy volunteer samples were negative for *Brachyspira*.

Remarkably, routine histological assessment of six individuals with membrane-associated spirochetosis failed to identify this condition in any patient. To further investigate why an association between *Brachyspira* and IBS has not previously been observed, 16S rDNA sequencing of faecal samples was undertaken in four patients with spirochetosis diagnosed by multiple methods (online supplemental data file S2); this approach also failed to detect *Brachyspira* in all cases.

Targeted analyses of colonic biopsies verified high prevalence of spirochetosis in IBS

Two different methods for targeted real-time PCR analysis of biopsy material were used in conjunction with immunofluorescence to establish spirochetosis prevalence rates in both cohorts.^{12 14} In the entire study population, the prevalence of *Brachyspira* colonisation in IBS was 31% (19/62 patients), with no cases identified among the 31 healthy controls ($p<0.001$). To minimise the risk of false positive results, subsequent analyses were focused on cases that were either positive, or consistently negative for *Brachyspira* according to ≥ 2 methods. These criteria were fulfilled for 80/93 (86%) participants; 50 patients with IBS and 30 healthy individuals. With this restriction, the overall prevalence of *Brachyspira* colonisation in IBS was 28% (14/50; $p<0.001$; figure 3A). *Brachyspira* prevalence in IBS-D was 42%, with highly congruent results in the two cohorts (44% and 40%; $p=0.01$ for both comparisons with healthy volunteers; online supplemental table S4).

A total of 43 patients with IBS and 27 controls had conclusive results from immunofluorescence analysis, which could be verified by at least one additional method. Membrane-associated spirochetosis was detected in 21% (9/43) of patients with IBS but not in any control ($p=0.01$; figure 3B). The prevalence of membrane-associated spirochetosis was 38% for IBS-D versus 0% for IBS-C ($p=0.05$). Prevalence rates stratified by cohort and IBS subtype are compiled in online supplemental table S4A–D. Individual and combined results for the different methods for *Brachyspira* identification in patients with confirmed spirochetosis are provided in online supplemental table S5.

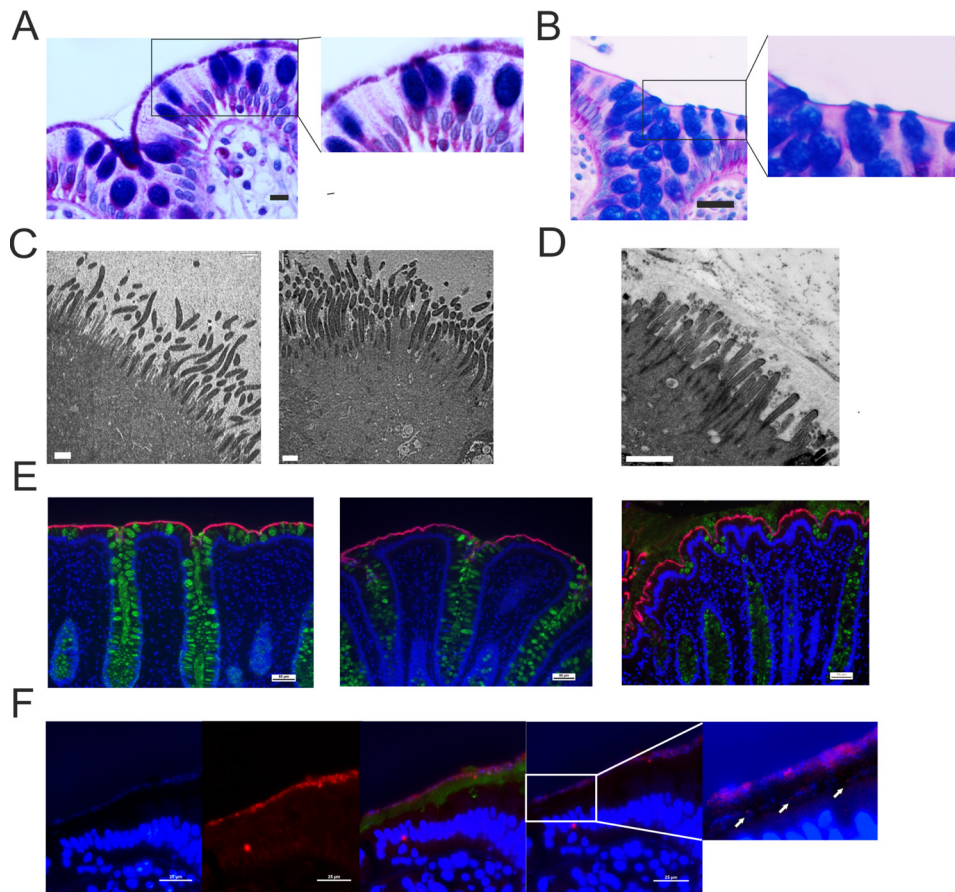


Figure 2 Histology, immunohistochemistry and transmission electron microscopy demonstrated the presence of *Brachyspira* at the colonic epithelial surface. (A) Alcian blue-periodic acid-Schiff (PAS) stain showing *Brachyspira* bacteria at the apical membrane. Scale bar: 10 μ m. (B) Representative Alcian blue-PAS stain from a patient with IBS without *Brachyspira*. Scale bar: 25 μ m. The right-hand images represent zoomed sections from the left panel. (C) Transmission electron micrographs showing *Brachyspira* attaching to the epithelial surface between the (shorter and less electron-dense) microvilli. Scale bar: 1 μ m. (D) Transmission electron micrograph from a patient without *Brachyspira*. Scale bar: 1 μ m. (E) Sections from three patients with IBS where *Brachyspira* species were detected by proteomics, stained with *Brachyspira* antiserum (red) and co-stained for mucus with anti-CLCA1 (green). DNA was counterstained with Hoechst (blue). Scale bars: 50 μ m. (F) In certain patients, *Brachyspira* colonisation was restricted to mucus. From left to right: (1) bacteria at a distance from the epithelium, visualised by DNA stain (Hoechst); (2) immunostaining for *Brachyspira*; (3) merge of images showing *Brachyspira* (red), mucus (anti-CLCA1, green) and DNA (Hoechst, blue) staining of nuclei and bacteria, demonstrating co-localisation of *Brachyspira* and DNA staining for bacteria in the outer mucus layer. (4) *Brachyspira* (red) and other bacteria (blue) could also be observed in the inner mucus layer, as indicated by arrows. Scale bars: 25 μ m.

Different niche preferences for *B. aalborgi/hominis* and *B. pilosicoli*

According to species discrimination by real-time PCR, 50% of patients with spirochetosis were colonised by *B. pilosicoli*; others had either *B. aalborgi* or the closely related, unconfirmed, species *B. hominis*.¹² Membrane-associated spirochetosis was linked to *B. aalborgi/hominis* in 78% of cases, whereas *B. pilosicoli* accounted for 83% of identifications restricted to mucus ($p=0.04$; figure 3C), suggesting that these species typically occupy different niches.

Membrane-associated spirochetosis defined a clinically distinctive subset of patients with IBS

For the analysis of clinical characteristics and immune responses, the two cohorts were merged. The analysis was restricted to participants with consistent results from ≥ 2 methods for *Brachyspira* identification ($n=80$) or with negative results from real-time PCR with no other tests performed ($n=3$). The demographic distribution of patients with IBS with versus without spirochetosis did not differ significantly, nor did total and component

IBS-SSS scores or rectal sensitivity (table 2, figure 4A, online supplemental figure S3A,B).⁷ By contrast, Extracolonic Symptom Severity Scores were significantly lower in membrane-associated spirochetosis (figure 4A).⁸ To quantify diarrhoeal symptoms, a 'stool score', representing the sum of average stool frequency and Bristol scale consistency, was constructed for each participant. This score was higher in membrane-associated spirochetosis than in patients with IBS without *Brachyspira* and controls ($p=0.02$ and <0.001 , respectively; figure 4B). Separate comparisons of stool frequency and consistency are shown in figure 4C. Oro-anal transit was also accelerated in membrane-associated spirochetosis as compared with other patients with IBS ($p=0.03$; figure 4D).

Brachyspira colonisation was linked to alterations of molecular pathways associated with membrane remodelling and ion-fluid homeostasis

To delineate the underlying mechanisms behind the symptoms observed in spirochetosis, the host mucus proteome was analysed (online supplemental data file S3). A global increase

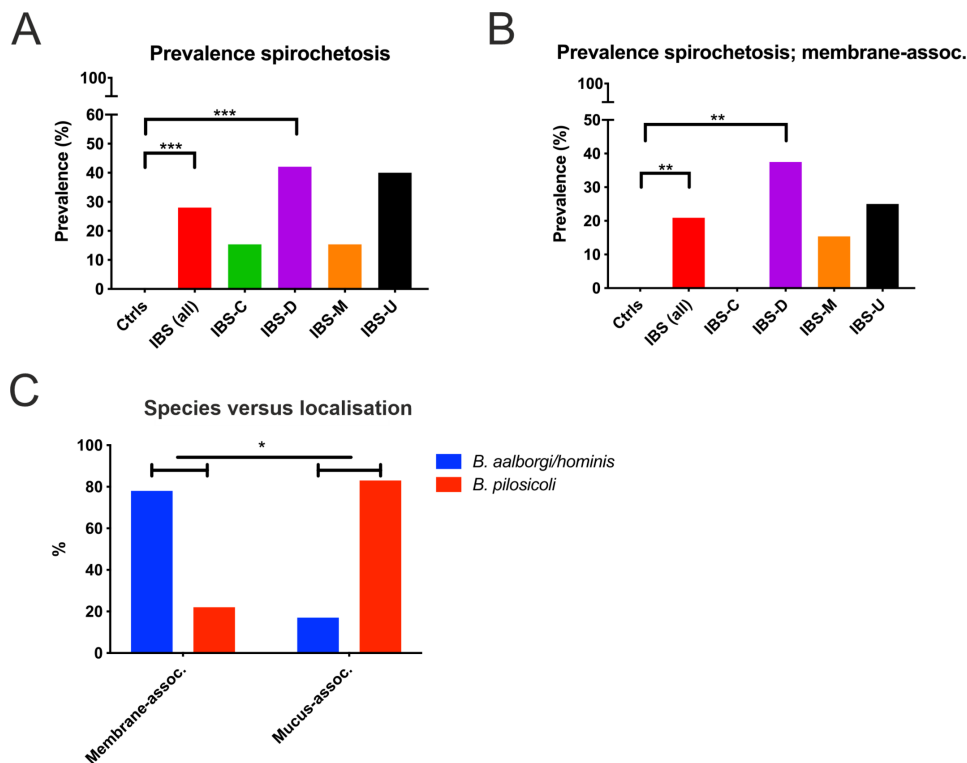


Figure 3 Prevalence of intestinal spirochetosis in IBS, and association between species and colonisation pattern. (A) Overall prevalence rates of *Brachyspira* colonisation in healthy individuals and in different IBS subtypes. (B) Prevalence of membrane-associated spirochetosis. In (A) and (B) data from the entire study population (both cohorts) are shown; these are based on agreement between at least two independent diagnostic methods. Membrane-associated spirochetosis was diagnosed by immunohistochemistry, with *Brachyspira* colonisation confirmed by at least one additional method. Patients with mucus-associated spirochetosis are not included in the analysis in (B). (C) Comparison of the distribution of *Brachyspira* species among patients with membrane-associated and mucus-associated spirochetosis. Groups were compared by Fisher's exact test: * $p \leq 0.05$ ** $p \leq 0.01$ *** $p \leq 0.001$. IBS-C, IBS with constipation; IBS-D, IBS with diarrhoea; IBS-M, IBS with mixed bowel habits; IBS-U, unsubtyped IBS without diarrhoea or constipation.

in proteins associated with bacterial adhesion and invasion, notably the Arp2/3 complex, was observed in patients with proteomic *Brachyspira* identifications (figure 5A). Furthermore, inflammatory mediators—complement factors, inflammasome and immunoproteasome components and particularly

immunoglobulins—were strongly induced. Consequently, the most enriched gene ontology biological pathways were associated with antibody-mediated phagocytosis (online supplemental figure S4A). An overlay with the Kyoto Encyclopaedia of Genes and Genomes (KEGG) pathway library revealed distinct

Table 2 Demographic and clinical characteristics of patients with IBS with and without intestinal spirochetosis

	No spirochetosis*	Spirochetosis; all†	Spirochetosis; mucus-associated‡	Spirochetosis; membrane-associated‡
No of participants	36	14	5	9
No of females (%)	27 (75)	10 (71)	4 (80)	6 (67)
Median age (p25–p75)§	31 (24–42)	28 (24–31)	29 (28–45)	26 (23–30)
Median duration, years (p25–p75)§	15 (7–24)	10 (4–13)	10 (7–18)	10 (1–10)
No of IBS-D (%)	11/36 (31)	8/14 (57)	2/5 (40)	6/9 (67)
No of IBS-C (%)	11/36 (31)	2/14 (14)	2/5 (40)	0/9 (0)
No of IBS-M (%)	11/36 (31)	2/14 (14)	0/5 (0)	2/9 (22)
No of IBS-U (%)	3/36 (8)	2/14 (14)	1/5 (20)	1/9 (11)
Median IBS-SSS (p25–p75)§	318 (231–365)	280 (220–354)	277 (203–282)	336 (233–355)
Median extracolonic SSS (p25–p75)§	189 (123–271)	125 (75–175)	202 (174–244)	75 (73–106)
Median OATT5 (p25–p75)§	1.3 (0.8–2.4)	1.1 (0.8–1.8)	1.9 (1.1–2.6)	1.0 (0.8–1.4)
Median rectal pain threshold, mm Hg (p25–p75)§	28 (20–28)	28 (20–32)	32 (27–37)	20 (20–32)

*Patients with IBS negative for *Brachyspira* according to at least two different methods, with no positive results.

†Patients with IBS positive for *Brachyspira* according to at least two methods.

‡The stratification of mucus-associated and membrane-associated spirochetosis was based on immunofluorescence analysis of biopsy sections.

§p25, 25th percentile; p75, 75th percentile.

IBS-C, IBS with constipation; IBS-D, IBS with diarrhoea; IBS-M, IBS with mixed bowel habits; IBS-U, unsubtyped IBS without diarrhoea or constipation; OATT, oro-anal transit time (days); SSS, Severity Scoring System.

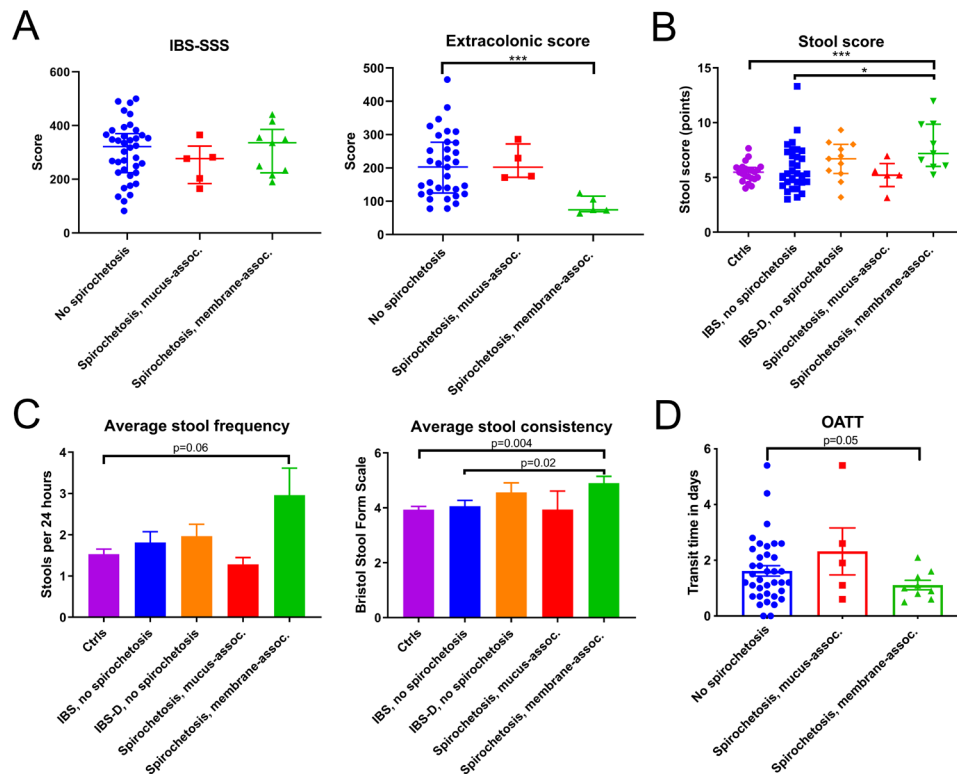


Figure 4 Individuals with membrane-associated spirochetosis constitute a clinically distinctive subgroup of patients with IBS. (A) Patient-reported IBS symptom severity according to the IBS Severity Scoring System (IBS-SSS) did not differ between patients with and without spirochetosis. However, Extra-colonic Symptom Scores were lower in membrane-associated spirochetosis (Mann-Whitney $U=11.5$; $p<0.001$). (B) Stool scores (summed average stool frequency and average Bristol scale consistency) were higher in membrane-associated spirochetosis than in patients with IBS without *Brachyspira*, indicating more diarrhoeal symptoms ($U=68.0$; $p=0.02$). In (A) and (B) individual observations are overlaid by the median and interquartile range. The significance threshold was adjusted by the Bonferroni method. * $p\leq 0.025$, *** $p\leq 0.001$. (C) Average stool frequency and consistency for controls and the different patient groups. Results for patients with IBS with diarrhoea (IBS-D) without *Brachyspira* ($n=11$) are separately displayed, as well as included in the category of all patients with IBS without spirochetosis. (D) Oro-anal transit times (OAT) for patients with IBS with versus without *Brachyspira*. OAT were shorter in membrane-associated spirochetosis as compared with IBS without spirochetosis ($p=0.05$) and patients with IBS without *Brachyspira* colonisation of the epithelial membrane ($p=0.03$; Welch-corrected $t=2.3$). For (C) and (D) bars represent the mean and error bars the SE of the mean (SEM); groups were compared by unpaired Welch's t-tests. For all analyses of clinical characteristics, the two study cohorts were merged. The analysis was restricted to participants where *Brachyspira* colonisation could be confirmed or rejected by at least two independent methods or cases where real-time PCR was negative for *Brachyspira* with no conclusive results from other methods.

resemblances with enteric infections, such as shigellosis and salmonellosis (figure 5B).

Other significantly dysregulated proteins were linked to guanylate cyclase/cGMP (guanylin, online supplemental figure S4B) and somatostatin (SST, PCSK1N; online supplemental figure S4C) signalling, as well as to methylglyoxal detoxification (GLO1, PARK7; online supplemental figure S4D). Guanylin is an endogenous ligand of guanylate cyclase-C (GC-C), also known as the heat-stable enterotoxin receptor.¹⁶ GC-C signalling attenuates, whereas somatostatin promotes, fluid reabsorption.¹⁷ Methylglyoxal is a minor by-product of human glycolysis, as well as a toxic metabolite of several intestinal bacterial species.¹⁸ While guanylin and proteins related to methylglyoxal toxicity were increased in spirochetosis, somatostatin levels were decreased (online supplemental figure S4B–D).

In patients with proteomic *Brachyspira* identifications, indicating dense membrane colonisation, glycocalyx and desmosomal proteins were reduced, suggesting multilevel mucosal barrier weakening (figure 5A). Indications of membrane remodelling were less conspicuous in individuals with no, or patchy, epithelial colonisation (figure 5C, online supplemental figure

S4E). By contrast, inflammatory mediators did not substantially differ depending on colonisation pattern.

Spirochetosis was associated with mild mucosal inflammation and mast cell activation

Histology revealed a modest increase in lamina propria immune cells ($p<0.001$), particularly plasma cells ($p<0.001$), in membrane-associated spirochetosis compared with IBS without *Brachyspira* (figure 5D–F). Intraepithelial/subepithelial eosinophils were also augmented ($p=0.002$; online supplemental figure S5A,B). Full results of the differential counting of mucosal immune cells are provided in online supplemental tables S6A,B.

Strikingly, total and activated mast cells were significantly more abundant in patients with IBS with *Brachyspira*, based on toluidine blue staining (figure 5G, online supplemental figure S5C,D). Subepithelial mast cell counts correlated closely with abdominal pain in spirochetosis (figure 5H, online supplemental figure S5E) but not in patients with IBS without *Brachyspira*. In the proteomic analysis, mast cell proteins tryptase, chymase and/or beta-hexosaminidase were more prevalent in mucus from

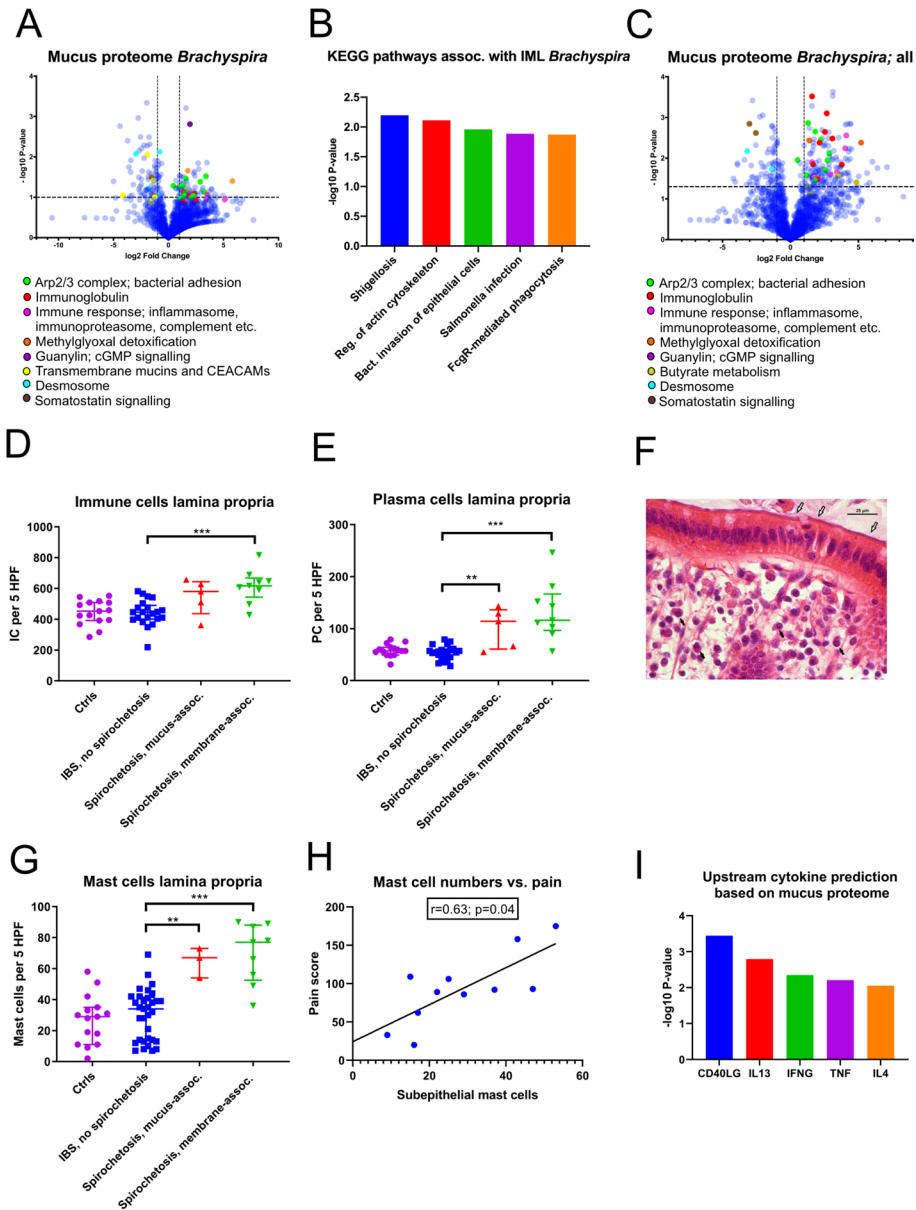


Figure 5 Spirochetosis was linked to distinct mucosal responses at the molecular and cellular level. (A) Volcano plot showing host mucus proteome alterations in samples where *Brachyspira* was detected by metaproteomics (n=6, vs n=18 samples from individuals without *Brachyspira*). The transformed p values were obtained by Welch’s t-tests. (B) Top five predicted Kyoto Encyclopedia of Genes and Genomes (KEGG) pathways based on mucus protein enrichment in individuals with metaproteomic *Brachyspira* identifications. Proteins at least twofold upregulated with a p value <0.10 were included in the analysis. Pathway p values were obtained through a modified version of Fisher’s exact test (EASE score), using DAVID bioinformatics tool. IML, inner mucus layer. (C) Host mucus proteome alterations in samples (n=17) from patients where *Brachyspira* could be detected by two independent methods (some of whom were negative for *Brachyspira* in the mass spectrometry analysis). (D) Increased immune cell infiltration of the lamina propria of patients with membrane-associated spirochetosis compared with patients with IBS without *Brachyspira* (Mann-Whitney U=17.0; p<0.001). The graph shows results from patients with membrane-associated spirochetosis (n=9), mucus-associated spirochetosis (n=5), patients with IBS without *Brachyspira* (n=21) and healthy volunteers (n=15). (E) Plasma cell counts were increased in spirochetosis (membrane-associated spirochetosis vs IBS without *Brachyspira*: U=9.0; p<0.001). (F) Plasma cells (black arrows) in an H&E-stained sigmoid colon section from a patient with membrane-associated *Brachyspira* (white arrows). Scale bar: 25 µm. (G) Mast cell expansion in the lamina propria of patients with spirochetosis (membrane-associated spirochetosis vs IBS without *Brachyspira*: U=19.5; p<0.001). The graph shows results from 9 patients with IBS with membrane-associated spirochetosis, 3 patients with mucus-associated spirochetosis, 33 patients with IBS without *Brachyspira* and 15 healthy volunteers. (H) Correlation between subepithelial mast cell numbers and pain (summed pain frequency and intensity scores from the IBS Severity Scoring System questionnaire). The line was fitted using linear regression analysis. Spearman’s rho: 0.63 (95% CI: 0.02 to 0.90). Immune cells were counted in five high-power fields (MAG ×600) in H&E or toluidine blue (mast cells) stained sigmoid colon sections; individual observations are overlaid by the median and IQR. Groups were compared by the Mann-Whitney U test: **p≤0.01, ***p≤0.001. (I) Upstream activation of cytokines in patients with proteomic *Brachyspira* identifications, predicted from Ingenuity Pathway Analysis of the host mucus proteome. Data were analysed through the use of IPA (Qiagen, <https://www.qiagenbioinformatics.com/products/ingenuity-pathway-analysis>). Minimum twofold upregulated proteins with a p value <0.15 were included in the analysis. P values for cytokine prediction were obtained by Fisher’s exact test. CEACAMs, carcinoembryonic antigen-related cell adhesion molecule; IC, immune cell; PC, plasma cell.

Gut: first published as 10.1136/gutjnl-2020-321466 on 11 November 2020. Downloaded from <http://gut.bmj.com/> on August 5, 2023 by guest. Protected by copyright.

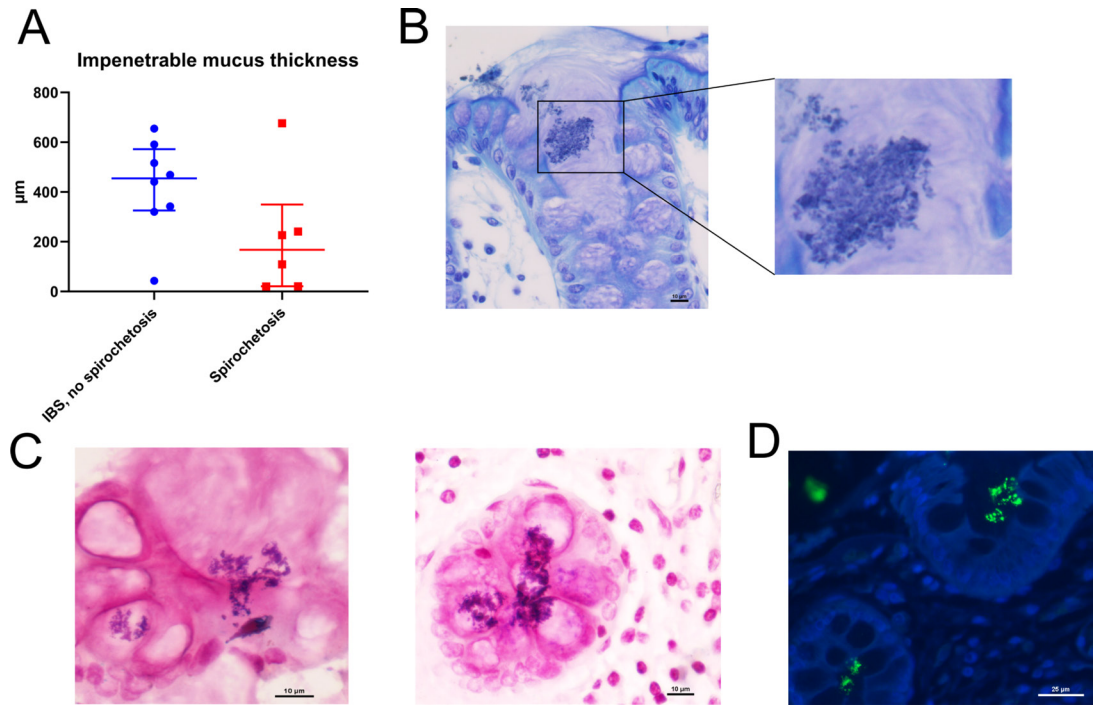


Figure 6 *Brachyspira* colonisation was associated with mucus barrier failure. (A) Impermeable mucus thickness tended to be reduced in patients with spirochetosis ($p=0.11$; Mann-Whitney U test). Toluidine blue (B) and Gram (C) staining of sigmoid colon sections from patients with spirochetosis showed bacterial invasion of crypt lumina and goblet cells. Some of the invading bacteria appeared Gram positive. Scale bars: 10 μm . (D) Section from a patient with spirochetosis stained with anti-lipoteichoic acid (green) and counterstained for DNA with Hoechst (blue), showing Gram-positive bacteria inside crypts. Scale bar: 25 μm .

patients with spirochetosis ($p=0.09$), whereas enzymes involved in histamine metabolism were more abundant ($p=0.04$ for the comparison with patients with IBS without *Brachyspira*; online supplemental figure S5F, online supplemental data file S3). Based on the overall mucus proteome alterations, cytokines CD40LG, IL13 and IL4 were predicted as major upstream regulators (figure 5I). Taken together, our observations suggest the immune response in *Brachyspira* infection to be predominantly Th2-driven.

***Brachyspira* colonisation was linked to mucus barrier failure and crypt invasion by other bacteria**

While the main component of the mucus, the MUC2 mucin, tended to be more abundant in spirochetosis, the thickness of the impermeable mucus was reduced (figure 6A, online supplemental figure S6A). Moreover, bacterial invasion into crypts and goblet cells was occasionally detected (figure 6B,C, online supplemental figure S6B–D). These observations did not match *Brachyspira* staining (online supplemental figure S6E). Instead, at least some of the invading bacteria appeared Gram positive, which was verified through staining with anti-lipoteichoic acid (figure 6C,D).

Antibiotic treatment in *Brachyspira*-associated IBS might be linked to partial clinical improvement over time

Based on current recommendations, four patients with membrane-associated spirochetosis received metronidazole treatment (online supplemental table S7).¹³ Although initial responses were variable, three patients could potentially be classified as long-term responders, with a reduction in overall IBS-SSS scores >50 points 1 year post-treatment (figure 7A,B).⁷ In particular, pain, bloating and IBS interference with quality

of life were reduced (figure 7C, online supplemental figure S7A,B). Bowel habit dissatisfaction and stool consistency did not conclusively improve (online supplemental figure S7C,D). However, in two responders, stool frequency was significantly reduced post-treatment, while the third responder had a normal frequency at baseline (figure 7D, online supplemental figure S7E).

Spirochaete relocation into crypts and goblet cells post-antibiotics

In all four cases, AB-PAS staining of tissue sections demonstrated clearance of the *Brachyspira* from the epithelium 6 weeks post-treatment (figure 8A). Real-time PCR of colonic biopsies and faecal samples corroborated a drastic reduction in *Brachyspira* (online supplemental table S8A,B).

However, results from immunostaining for *Brachyspira* in biopsies obtained 6 weeks post-metronidazole were less encouraging. Although the spirochetes had largely disappeared from the epithelial surface, *Brachyspira* invasion into crypts and goblet cell mucus granules was observed in all four patients (figure 8B–G, online supplemental figure S8A). Gram staining did not indicate a similar relocation of Gram-positive bacteria post-treatment (online supplemental figure S8B), suggesting a specific rather than general response.

While overall mucosal immune cell numbers remained unchanged after treatment, there was a reduction in plasma cell, mast cell and eosinophil counts (online supplemental figure S8C–F, figure 8H). Taken together, the cellular composition appeared to deviate from a Th2-like to a Th1-like pattern—possibly reflecting the *Brachyspira* shift to an intracellular lifestyle.

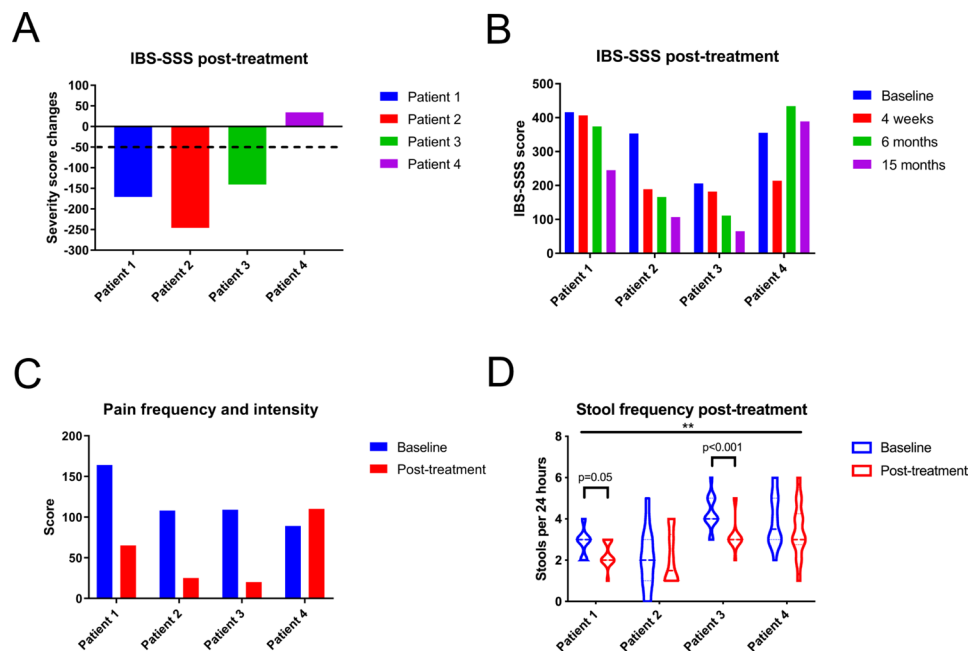


Figure 7 Three in four patients with spirochetosis experienced partial clinical improvement following antibiotic treatment. (A) Three patients had a sustained clinical response, defined as a reduction of their overall scores from the IBS Severity Scoring System (IBS-SSS) of at least 50 points, after 15 months. (B) Overall IBS-SSS scores at baseline and at 1, 6 and 15 months post-treatment. (C) Summed IBS-SSS pain frequency and intensity values at baseline and at 15 months post-treatment. (D) Violin plot of stool frequency at baseline and 1 year post-treatment. The midline represents the median and the upper and lower lines the interquartile range (25th and 75th percentile). Time points were compared through a two-way analysis of variance, with the horizontal bar on top referring to the overall comparison of stool frequency before and after treatment ($F=7.0$; $p=0.01$). Subsequent intraindividual comparisons were performed by Mann-Whitney U tests, with an adjusted significance threshold of 0.0125.

DISCUSSION

The increased incidence of IBS after a gastroenteritis episode suggests microbial perturbation as an underlying factor.¹ However, studies of faecal microbiota in IBS have not demonstrated reproducible alterations.² In this investigation, potentially pathogenic *Brachyspira* species were identified in the colonic mucosa of 31% of patients with IBS but not in any healthy individual. *Brachyspira* attachment to the epithelial brush border was observed in every fifth patient with IBS and associated with diarrhoea, accelerated oro-anal transit, mild mucosal inflammation and mast cell activation. Hence, *Brachyspira* colonisation defines a sizeable and distinctive subgroup of patients with IBS that might be responsive to antibiotic therapy. However, metronidazole treatment paradoxically resulted in spirochaete invasion into crypts and goblet cells. Thus, our observations suggest a role for *Brachyspira* in IBS-D pathogenesis but also urge caution with regard to antibiotic therapy in IBS.

While *Brachyspira* species are well-established pathogens in veterinary medicine, reports on the relationship between spirochetosis and symptoms in humans are contradictory.^{15–19–23} Variable, frequently partial, responses to treatment have added to the controversy.^{13–15–20} Potentially human-pathogenic *Brachyspira* species are notoriously difficult to culture. Therefore, the diagnosis typically relies on histology, where perpendicular attachment of the *Brachyspira* to the apical membrane may appear as a distinctive ‘fringe’.^{14–15–19–21–24} Reported prevalence rates of intestinal spirochetosis range from 0.5% to 3% in industrialised countries.^{13–15–21–23} Here, based on results from two independent prospective cohorts, *Brachyspira* were observed in contact with the epithelium in 20%–40% of patients with IBS-D but not in patients with predominant constipation or healthy individuals.

Although one previous publication has suggested a link between IBS and intestinal spirochetosis, this is the first report

of increased prevalence of *Brachyspira* colonisation in IBS.²¹ Patients with IBS-D routinely undergo recto-/colonoscopy with histology. Moreover, 16S rDNA sequencing of faecal samples has been performed in several large-scale studies.^{2–3} Thus, it may be surprising that this association should have gone undetected. Here instead, the initial observations were made through unbiased metaproteomic analysis of mucus samples and corroborated by immunostaining and targeted PCR analysis. By contrast, routine histology and faecal 16S rDNA sequencing failed to detect *Brachyspira* in these patients. The ability of standard 16S amplicon sequencing to identify *Brachyspira* species was recently shown to be hampered by primer incompatibility.²⁵ This underlines the importance of innovative and complementary methods to identify novel associations between gut microbiota and human disease.

The effects of *Brachyspira* attachment on the epithelium and underlying tissue have traditionally been regarded as minimal.^{15–24} Here, in-depth analysis of host mucosal responses revealed a striking increase in inflammatory mediators and proteins associated with membrane remodelling. Unbiased functional annotation analysis mapped these alterations to pathways associated with bacterial adhesion and phagocytosis, detecting mechanistic resemblances to enteric infections such as salmonellosis and shigellosis. Histology confirmed a modest but distinctive inflammatory response, with expansion of plasma cells, eosinophils and mast cells. The cellular composition, in conjunction with upstream cytokine prediction based on the proteomic analysis, indicated that the inflammation may be predominantly Th2-driven. Further studies are required to establish a causal relationship between spirochetosis and concomitant mucosal inflammation. Still, our observations suggest *Brachyspira* as a potential human pathogen rather than merely a harmless commensal.

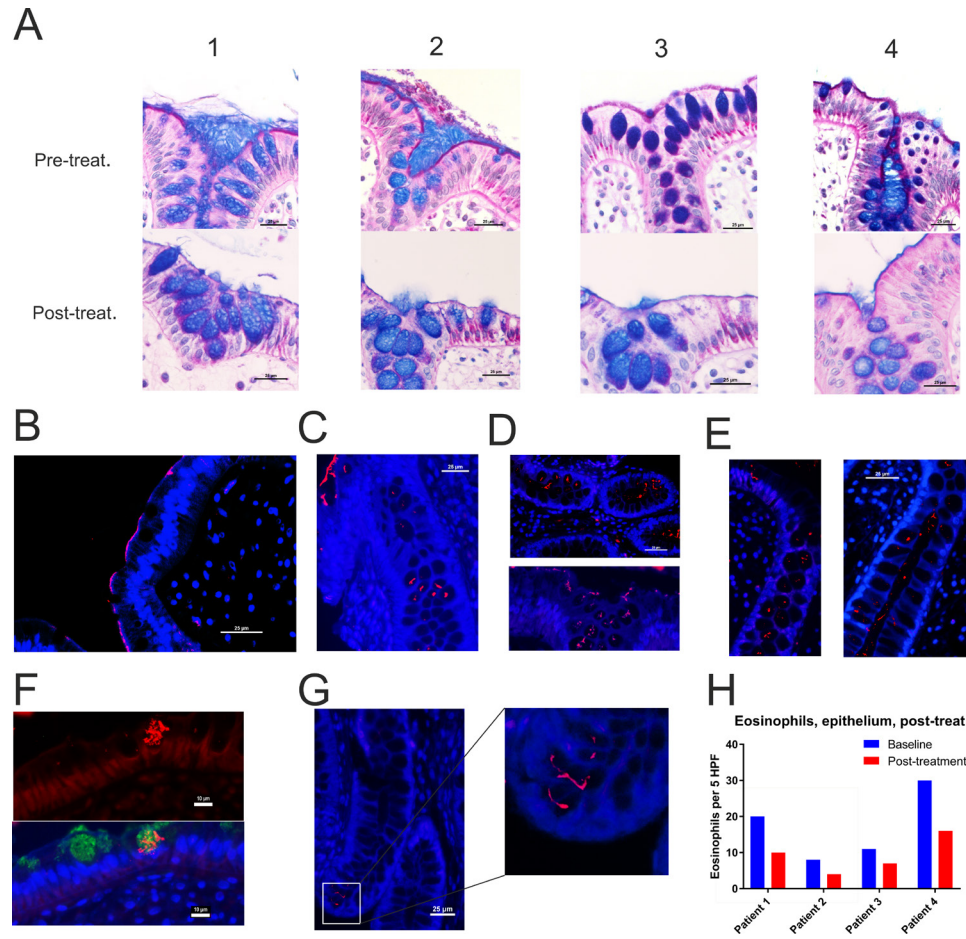


Figure 8 Invasion of spirochetes into crypts and goblet cells post-treatment. (A) Alcian blue-periodic acid-Schiff stain of (from left to right) patients 1–4 before and 6 weeks after the completion of treatment. Staining with *Brachyspira* antiserum (red) revealed a persistent, faint/patchy staining of the apical membrane after treatment in the non-responder ((B), patient 4) and in patient 1 (C). Furthermore, *Brachyspira* (red) was observed in crypt lumina and goblet cells in all cases, as shown for patients 1 (C), 2 (D), 3 (E) and 4 (see online supplemental figure S8). (F) *Brachyspira* (red) co-localised with anti-MUC2 staining (green) inside goblet cells. The figure shows images of the same area that were obtained from adjacent sections, manually fitted and superimposed. (G) *Brachyspira* (red) penetrating into the crypt base. In all immunofluorescent images, nucleic acids were counterstained with Hoechst (blue). Scale bars in (F) are 10 μm , all other scale bars 25 μm . (H) There was a reduction of subepithelial/intraepithelial eosinophils post-treatment in all cases.

While diarrhoea has previously been related to spirochetosis, the mechanistic link has not been explored.^{15 19} Here, based on analysis of host responses, several molecular shifts that may synergistically induce diarrhoea were identified. First, remodelling of the apical membrane might reduce the surface available for fluid re-uptake. Second, a pronounced increase in the mucus abundance of guanylin was observed in membrane-associated spirochetosis. Guanylin is a ligand of the apical GC-C receptor, which is also the target of heat-stable *Escherichia coli* enterotoxin.¹⁶ GC-C signalling attenuates sodium uptake by NHE3 (SLC9A3) and promotes chloride secretion by cystic fibrosis transmembrane conductance regulator (CFTR), resulting in impaired fluid absorption.¹⁶ Accordingly, activating mutations of GC-C is a rare cause of IBS-D.¹⁶ Moreover, endogenous GC-C signalling is induced in certain enteric infections and may contribute to pathogen clearance.²⁶ Another potential cause of diarrhoea could be decreased somatostatin signalling, as suggested by the proteomic analysis. Somatostatin promotes intestinal fluid absorption, possibly via the NHE8 (SLC9A8) transporter, and is used to treat refractory diarrhoea.¹⁷ Somatostatin-producing cells are highly susceptible to *Helicobacter pylori*-related inflammation and might conceivably also be particularly affected by

spirochetosis. Finally, histamine secretion from activated mast cells may promote secretomotor diarrhoea.²⁷ In conclusion, this study identified several mechanistic clues to the association between spirochetosis and IBS-D, supporting the biological relevance of this unexpected observation.

Antibiotic treatment of patients with spirochetosis was associated with alleviated abdominal pain and bloating, suggesting that *Brachyspira* may contribute to IBS symptoms other than diarrhoea. Mast cell activation has previously been linked to IBS-related abdominal pain, although reports are conflicting.^{28 29} In this study, mucosal mast cell counts were selectively increased in *Brachyspira*-associated IBS and correlated closely with abdominal pain scores in patients with spirochetosis but not in IBS without *Brachyspira*. Thus, the controversial link between mast cells and IBS symptomatology might in part depend on *Brachyspira* colonisation status.

Spirochetosis was associated with mucus barrier failure, decreased glycocalyx components and sporadic crypt invasion by other genera. Furthermore, there were indications of enhanced mucosal responses to bacterial metabolites—including methylglyoxal that is likely not produced by *Brachyspira*. Methylglyoxal has been linked to visceral hypersensitivity, for example,

through the induction of nociceptor ion channel TRPA1.^{18 30} Hence, inappropriate host contact with commensal microbiota could aggravate symptoms in patients with spirochetosis and may partly explain variations of the clinical picture.

Several studies have reported positive effects of non-absorbable antibiotics in a subset of patients with IBS.^{2 31} In our investigation, three in four patients with spirochetosis experienced partial, but sustained, symptom relief following metronidazole treatment. The response correlated with improvement of objective parameters, such as stool frequency and mast cell counts. Results from this small-scale, open-label intervention must obviously be interpreted with caution. The effects of *Brachyspira* eradication in IBS will hopefully be the topic of future, appropriately powered, placebo-controlled trials.

Our observations tentatively suggest that stratification of patients with IBS with spirochetosis for antibiotic treatment might result in improved response rates. Nonetheless, there are obvious caveats, including growing resistance problems reported from veterinary medicine.³² In this study, the therapeutic intervention had to be discontinued due to spirochaete relocation into goblet cells. Concerningly, *Brachyspira* were also detected in the crypt base post-antibiotics, with the potential to directly influence the stem cell reservoir. Thus, therapeutic strategies other than antibiotics may have to be considered to treat IBS-associated spirochetosis. These might include short-term laxative treatment, bismuth subsalicylate or probiotics/prebiotics, used alone or as adjuvants to antibiotics.

While bacterial invasion of goblet cell mucus granules post-antibiotics is a novel phenomenon, it is partly reminiscent of goblet cell-associated antigen passages (GAPs).³³ In mice, GAPs mediate translocation of live bacteria through the colonic epithelium in response to dysbiosis, for instance during metronidazole treatment.³³ Nevertheless, the time lapse since antibiotic therapy and the massive scale of *Brachyspira* relocation rather support an adaptation of the spirochetes. Thus, certain *Brachyspira* presumably have a tropism for colonising mucus granules—a trait that may have been favoured by antibiotic treatment. Although metronidazole easily diffuses into cells, the densely packed granule contents might restrict its access to the *Brachyspira*. Future studies should investigate whether antibiotics promote similar adaptations in other pathogenic or commensal bacterial species.

The study has some limitations. Suboptimal biopsy specimens and technical failures resulted in a small proportion of missing data for certain methods, although with no systematic bias between participant categories. Most importantly, the observational nature of this study did not allow us to establish a causal relationship between *Brachyspira* and IBS symptoms. Other unanswered questions concern the potential contribution of epidemiological factors to *Brachyspira* colonisation—including antibiotic treatment, which may be more frequent in patients with IBS and has been linked to increased risk of post-infectious IBS.¹ The exact molecular mechanisms of the *Brachyspira*-host interaction also require further investigation. However, as the main species associated with intestinal spirochetosis, *B. aalborgi*, is exceptionally difficult to culture and infects only primates, experimental models to address this question are lacking.^{14 24} Hence, there are major challenges to overcome in order to fully elucidate the role of *Brachyspira* in IBS-D pathogenesis.

In conclusion, we report a novel, strong association between the *Brachyspira* genus and IBS. Based on results from two independent prospective cohorts, mucosal *Brachyspira* colonisation was observed in 40% of patients with IBS-D but not in any healthy individual. *Brachyspira*-associated IBS was linked to distinctive

clinical, histological and molecular characteristics, suggesting that it should be considered a separate diagnostic entity. Thus, *Brachyspira* eradication therapy could conceivably have substantial effects on the overall IBS morbidity burden. However, the increased invasiveness of the spirochetes post-treatment urges caution with regard to antibiotic therapy in IBS. Strikingly, the invasion of goblet cell mucus granules could represent a novel bacterial strategy to survive antibiotics, which may have bearings on other recurrent and chronic infections originating at mucosal surfaces.

Acknowledgements The authors wish to thank Ms Gunilla Naslin (Department of Gastroenterology and Hepatology, Sahlgrenska University Hospital, Gothenburg) for excellent assistance with sample collection and the administration of patient follow-up. Dr Liisa Arike (Department of Medical Biochemistry, University of Gothenburg) is gratefully acknowledged for her assistance with the mass spectrometry analysis. We would also like to thank Dr Valentina Tremaroli (Department of Molecular and Clinical Medicine, University of Gothenburg) for kindly providing her time and expertise to assist us with the 16S rDNA sequencing analysis. Professor Lars Engstrand (Department of Microbiology, Karolinska Institute, Stockholm) is acknowledged for the generous provision of the *Brachyspira* antiserum. The authors thank the Center for Cellular Imaging (CCI) at the University of Gothenburg for help with sample preparation for electron microscopy and HistoCenter, Gothenburg, for assistance with preparation of sections for histology.

Contributors KSJ, MS and GCH conceived the original idea; KSJ, BD, LE, CW, AE and AJ performed experimental procedures and data analysis; HT and MS supervised subject enrolment; KSJ, LE, HT and MS analysed clinical data, KSJ drafted the manuscript with input from all authors.

Funding This work was supported by the National Institute of Allergy and Infectious Diseases (U01AI095473), Knut and Alice Wallenberg Foundation, European Research Council (ERC), Swedish Research Council, AFA insurance, IngaBritt and Arne Lundberg Foundation, Sahlgrenska University Hospital (ALF), Wilhelm and Martina Lundgren Foundation, Adlerbert Research Foundation. The funders were not involved in the decision to publish; and had no role in the design and execution of the study, or in the preparation of the manuscript.

Disclaimer The content is solely the responsibility of the authors and does not necessarily represent the official views of the NIH.

Competing interests MS has received unrestricted research grants from Danone Nutricia Research and Ferring Pharmaceuticals, has served as a Consultant/Advisory Board member for AstraZeneca, Danone, Nestlé, Ammirall, Allergan, Albiro, Glycom, and Shire, and as a speaker for Tillotts, Menarini, Takeda, Shire, Allergan, and Ammirall.

Patient consent for publication Not required.

Ethics approval The study was approved by the Gothenburg Ethical Review Board.

Provenance and peer review Not commissioned; externally peer reviewed.

Data availability statement All data relevant to the study are included in the article or uploaded as supplementary information.

Supplemental material This content has been supplied by the author(s). It has not been vetted by BMJ Publishing Group Limited (BMJ) and may not have been peer-reviewed. Any opinions or recommendations discussed are solely those of the author(s) and are not endorsed by BMJ. BMJ disclaims all liability and responsibility arising from any reliance placed on the content. Where the content includes any translated material, BMJ does not warrant the accuracy and reliability of the translations (including but not limited to local regulations, clinical guidelines, terminology, drug names and drug dosages), and is not responsible for any error and/or omissions arising from translation and adaptation or otherwise.

Open access This is an open access article distributed in accordance with the Creative Commons Attribution Non Commercial (CC BY-NC 4.0) license, which permits others to distribute, remix, adapt, build upon this work non-commercially, and license their derivative works on different terms, provided the original work is properly cited, appropriate credit is given, any changes made indicated, and the use is non-commercial. See: <http://creativecommons.org/licenses/by-nc/4.0/>.

ORCID iD

Gunnar C Hansson <http://orcid.org/0000-0002-1900-1869>

REFERENCES

- Spiller R, Garsed K. Postinfectious irritable bowel syndrome. *Gastroenterology* 2009;136:1979–88.
- Simrén M, Barbara G, Flint HJ, et al. Intestinal microbiota in functional bowel disorders: a Rome Foundation report. *Gut* 2013;62:159–76.

- 3 Tap J, Derrien M, Törnblom H, *et al.* Identification of an intestinal microbiota signature associated with severity of irritable bowel syndrome. *Gastroenterology* 2017;152:111–23.
- 4 Johansson MEV, Phillipson M, Petersson J, *et al.* The inner of the two MUC2 mucin-dependent mucus layers in colon is devoid of bacteria. *Proc Natl Acad Sci U S A* 2008;105:15064–9.
- 5 Li H, Limenitakis JP, Fuhrer T, *et al.* The outer mucus layer hosts a distinct intestinal microbial niche. *Nat Commun* 2015;6:8292.
- 6 Srinivasan M, Sedmak D, Jewell S. Effect of fixatives and tissue processing on the content and integrity of nucleic acids. *Am J Pathol* 2002;161:1961–71.
- 7 Francis CY, Morris J, Whorwell PJ. The irritable bowel severity scoring system: a simple method of monitoring irritable bowel syndrome and its progress. *Aliment Pharmacol Ther* 1997;11:395–402.
- 8 Gonsalkorale WM, Houghton LA, Whorwell PJ. Hypnotherapy in irritable bowel syndrome: a large-scale audit of a clinical service with examination of factors influencing responsiveness. *Am J Gastroenterol* 2002;97:954–61.
- 9 Gustafsson JK, Ermund A, Johansson MEV, *et al.* An ex vivo method for studying mucus formation, properties, and thickness in human colonic biopsies and mouse small and large intestinal explants. *Am J Physiol Gastrointest Liver Physiol* 2012;302:G430–8.
- 10 Wiśniewski JR, Zougman A, Nagaraj N, *et al.* Universal sample preparation method for proteome analysis. *Nat Methods* 2009;6:359–62.
- 11 Cox J, Neuhauser N, Michalski A, *et al.* Andromeda: a peptide search engine integrated into the MaxQuant environment. *J Proteome Res* 2011;10:1794–805.
- 12 Westerman LJ, Stel HV, Schipper MEI, *et al.* Development of a real-time PCR for identification of *Brachyspira* species in human colonic biopsies. *PLoS One* 2012;7:e52281.
- 13 Esteve M, Salas A, Fernández-Bañares F, *et al.* Intestinal spirochetosis and chronic watery diarrhea: clinical and histological response to treatment and long-term follow up. *J Gastroenterol Hepatol* 2006;21:1326–33.
- 14 Kraaz W, Pettersson B, Thunberg U, *et al.* *Brachyspira aalborgi* infection diagnosed by culture and 16S ribosomal DNA sequencing using human colonic biopsy specimens. *J Clin Microbiol* 2000;38:3555–60.
- 15 Tsinganou E, Gebbers J-O. Human intestinal spirochetosis—a review. *Ger Med Sci* 2010;8:Doc01.
- 16 Waldman SA, Camilleri M. Guanylate cyclase-C as a therapeutic target in gastrointestinal disorders. *Gut* 2018;67:1543–52.
- 17 Wang C, Xu H, Chen H, *et al.* Somatostatin stimulates intestinal NHE8 expression via p38 MAPK pathway. *Am J Physiol Cell Physiol* 2011;300:C375–82.
- 18 Zhang S, Jiao T, Chen Y, *et al.* Methylglyoxal induces systemic symptoms of irritable bowel syndrome. *PLoS One* 2014;9:e105307.
- 19 Hampson DJ. The spirochete *Brachyspira pilosicoli*, enteric pathogen of animals and humans. *Clin Microbiol Rev* 2018;31:e00087–17.
- 20 Weisheit B, Bethke B, Stolte M. Human intestinal spirochetosis: analysis of the symptoms of 209 patients. *Scand J Gastroenterol* 2007;42:1422–7.
- 21 Walker MM, Talley NJ, Inganäs L, *et al.* Colonic spirochetosis is associated with colonic eosinophilia and irritable bowel syndrome in a general population in Sweden. *Hum Pathol* 2015;46:277–83.
- 22 Tanahashi J, Daa T, Gamachi A, *et al.* Human intestinal spirochetosis in Japan; its incidence, clinicopathologic features, and genotypic identification. *Mod Pathol* 2008;21:76–84.
- 23 Westerman LJ, de Boer RF, Roelfsema JH, *et al.* *Brachyspira* species and gastroenteritis in humans. *J Clin Microbiol* 2013;51:2411–3.
- 24 Hovind-Hougen K, Birch-Andersen A, Henrik-Nielsen R, *et al.* Intestinal spirochetosis: morphological characterization and cultivation of the spirochete *Brachyspira aalborgi* gen. nov., sp. nov. *J Clin Microbiol* 1982;16:1127–36.
- 25 Thorell K, Inganäs L, Backhans A, *et al.* Isolates from colonic spirochetosis in humans show high genomic divergence and potential pathogenic features but are not detected using standard primers for the human microbiota. *J Bacteriol* 2019;201:e00272–19.
- 26 Mann EA, Harmel-Laws E, Cohen MB, *et al.* Guanylate cyclase C limits systemic dissemination of a murine enteric pathogen. *BMC Gastroenterol* 2013;13:135.
- 27 Wang YZ, Cooke HJ, Su HC, *et al.* Histamine augments colonic secretion in guinea pig distal colon. *Am J Physiol* 1990;258:G432–9.
- 28 Braak B, Klooker TK, Wouters MM, *et al.* Mucosal immune cell numbers and visceral sensitivity in patients with irritable bowel syndrome: is there any relationship? *Am J Gastroenterol* 2012;107:715–26.
- 29 Barbara G, Wang B, Stanghellini V, *et al.* Mast cell-dependent excitation of visceral-nociceptive sensory neurons in irritable bowel syndrome. *Gastroenterology* 2007;132:26–37.
- 30 Huang Q, Chen Y, Gong N, *et al.* Methylglyoxal mediates streptozotocin-induced diabetic neuropathic pain via activation of the peripheral TRPA1 and Nav1.8 channels. *Metabolism* 2016;65:463–74.
- 31 Pimentel M, Lembo A, Chey WD, *et al.* Rifaximin therapy for patients with irritable bowel syndrome without constipation. *N Engl J Med* 2011;364:22–32.
- 32 Hampson DJ, Lugsomya K, La T, *et al.* Antimicrobial resistance in *Brachyspira* - An increasing problem for disease control. *Vet Microbiol* 2019;229:59–71.
- 33 Knoop KA, McDonald KG, Kulkarni DH, *et al.* Antibiotics promote inflammation through the translocation of native commensal colonic bacteria. *Gut* 2016;65:1100–9.