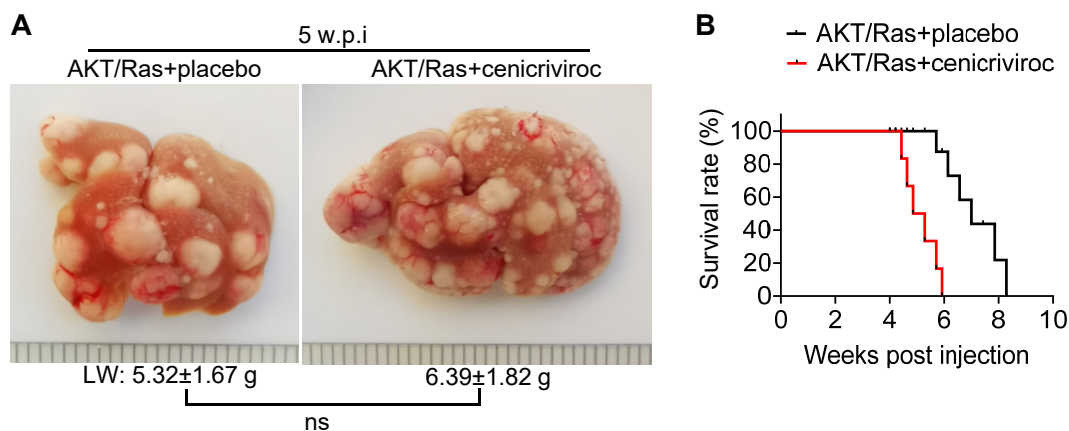


## Supplemental Figure 16



**Supplemental Figure 16 CCR2 antagonist slightly promoted growth of HCC in AKT/Ras mice. (A)** Macroscopic appearance of livers from AKT/Ras mice treated with placebo ( $n=6$ , 5 w.p.i) and cenicriviroc ( $n=6$ , 5 w.p.i) (Mann-Whitney U test). LW: liver weight. **(B)** Kaplan Meier survival curves of AKT/Ras mice injected with placebo ( $n=6$ ) and cenicriviroc ( $n=6$ ) (log-rank test). Data represent mean  $\pm$  SEM. ns: no significance.