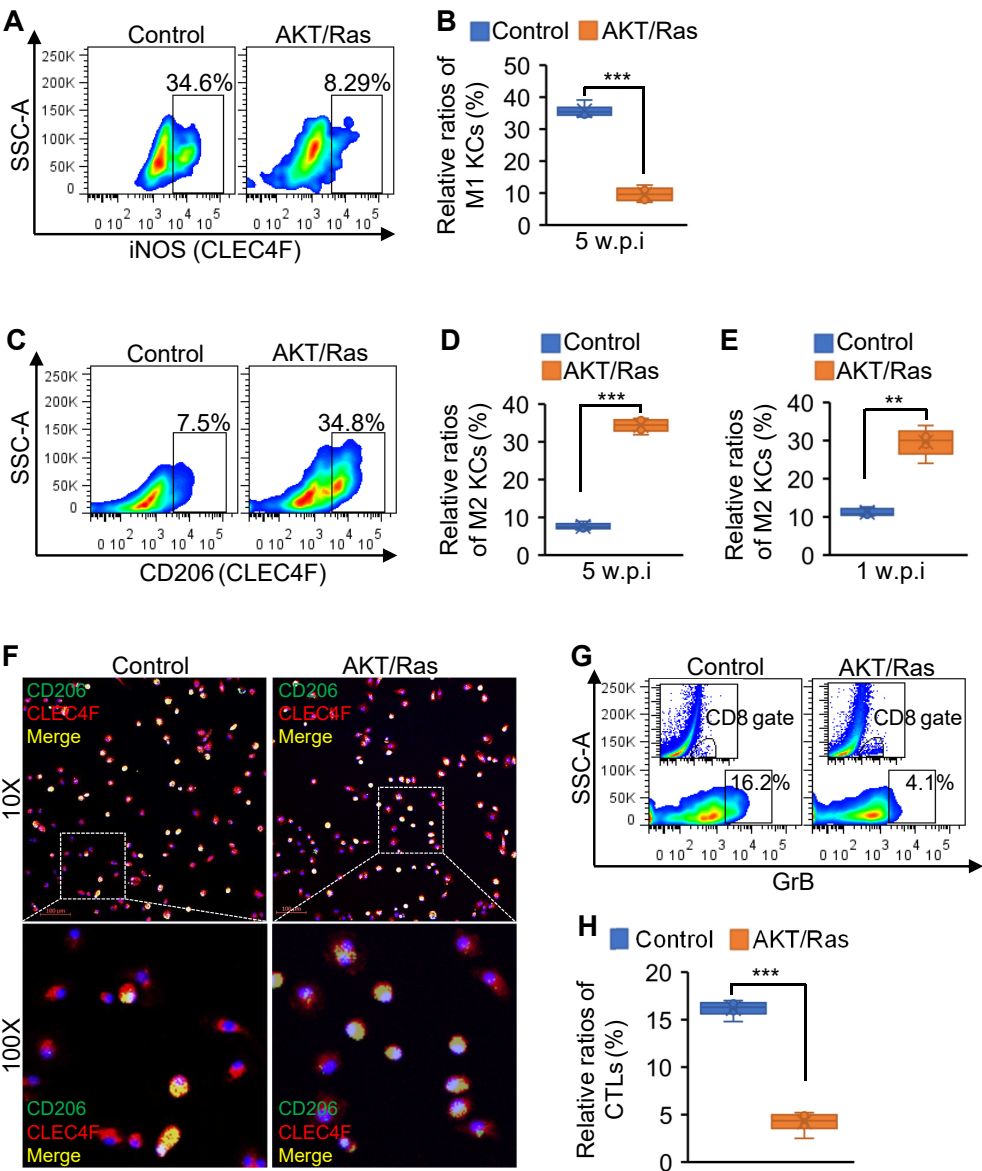


Supplemental Figure 2



**Supplemental Figure 2 HDI of AKT/Ras drove M1 to M2 switch of KCs in mice. (A-D)** The ratios of M1 KCs (iNOS<sup>+</sup>CLEC4F<sup>+</sup>) or M2 KCs (CD206<sup>+</sup>CLEC4F<sup>+</sup>) in livers of FVB/NJ mice injected with pT3-EF1 $\alpha$  (Control,  $n=6$ , 5 w.p.i) or AKT/Ras ( $n=6$ , 5 w.p.i) (Mann-Whitney test). **(E)** The ratios of M2 KCs in livers of FVB/NJ mice injected with pT3-EF1 $\alpha$  (Control,  $n=3$ , 1 w.p.i) or AKT/Ras ( $n=3$ , 1 w.p.i) (Mann-Whitney test). **(F)** Double immunostaining of CLEC4F and CD206 in KCs transfected with pT3-EF1 $\alpha$  or AKT/Ras. KCs were isolated from wild-type FVB/NJ mice. **(G-H)** The ratios of CTLs (CD8<sup>+</sup>GrB<sup>+</sup>) in livers of FVB/NJ mice injected with pT3-EF1 $\alpha$  (Control,  $n=6$ , 5 w.p.i) or AKT/Ras ( $n=6$ , 5 w.p.i) (Mann-Whitney test). Data represent mean  $\pm$  SEM. \*\* $p < 0.01$  and \*\*\* $p < 0.001$ . Scale bar: 100  $\mu$ m.