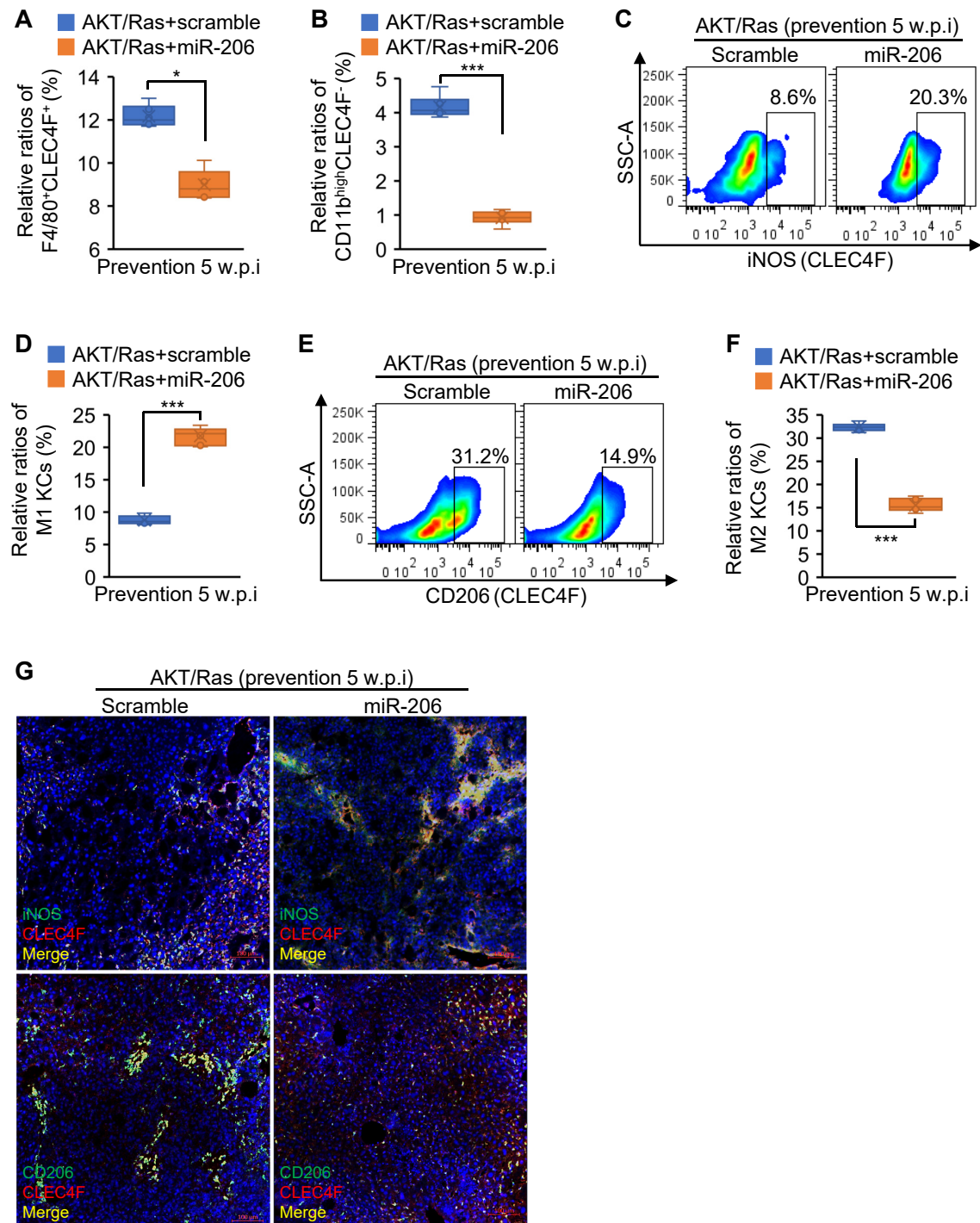


## Supplemental Figure 4



**Supplemental Figure 4 KC-specific expression of miR-206 drove M2 to M1 switch of KCs in AKT/Ras mice. (A-B)** Total number of KCs (CLEC4F<sup>+</sup>F4/80<sup>+</sup>) and infiltrating macrophages (CD11b<sup>high</sup> CLEC4F<sup>-</sup>) in livers of AKT/Ras mice injected with pT3-CD68p-scramble ( $n=6$ , 5 w.p.i) or pT3-CD68p-miR-206 ( $n=6$ , 5 w.p.i) (Mann-Whitney test). **(C-F)** The ratios of M1 or M2 KCs in livers of two groups of mice. **(G)** Immunostaining of iNOS, CD206 and CLEC4F (10X) in livers of two groups of mice. Data represent mean  $\pm$  SEM.  $*p < 0.05$  and  $***p < 0.001$ .