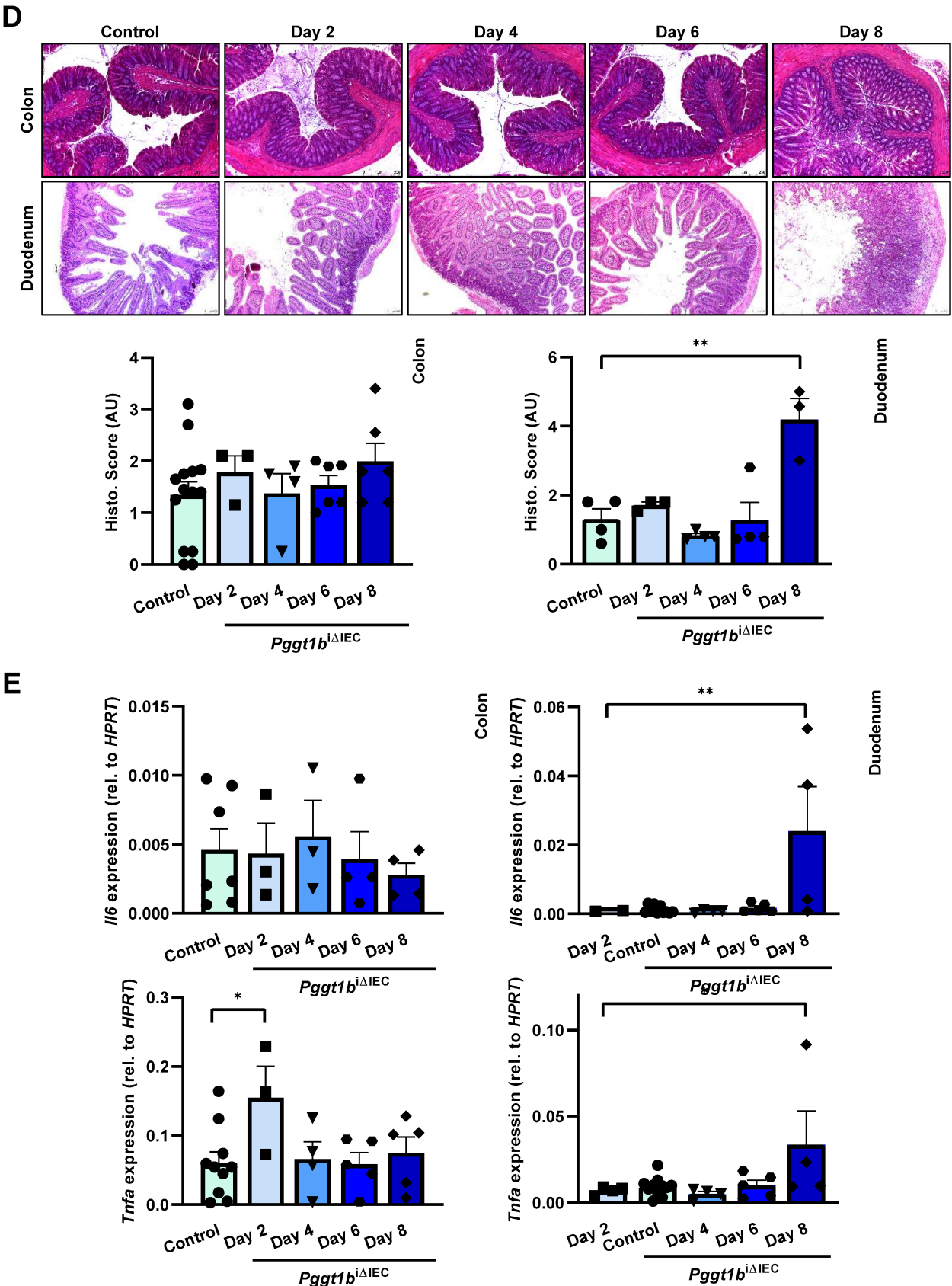


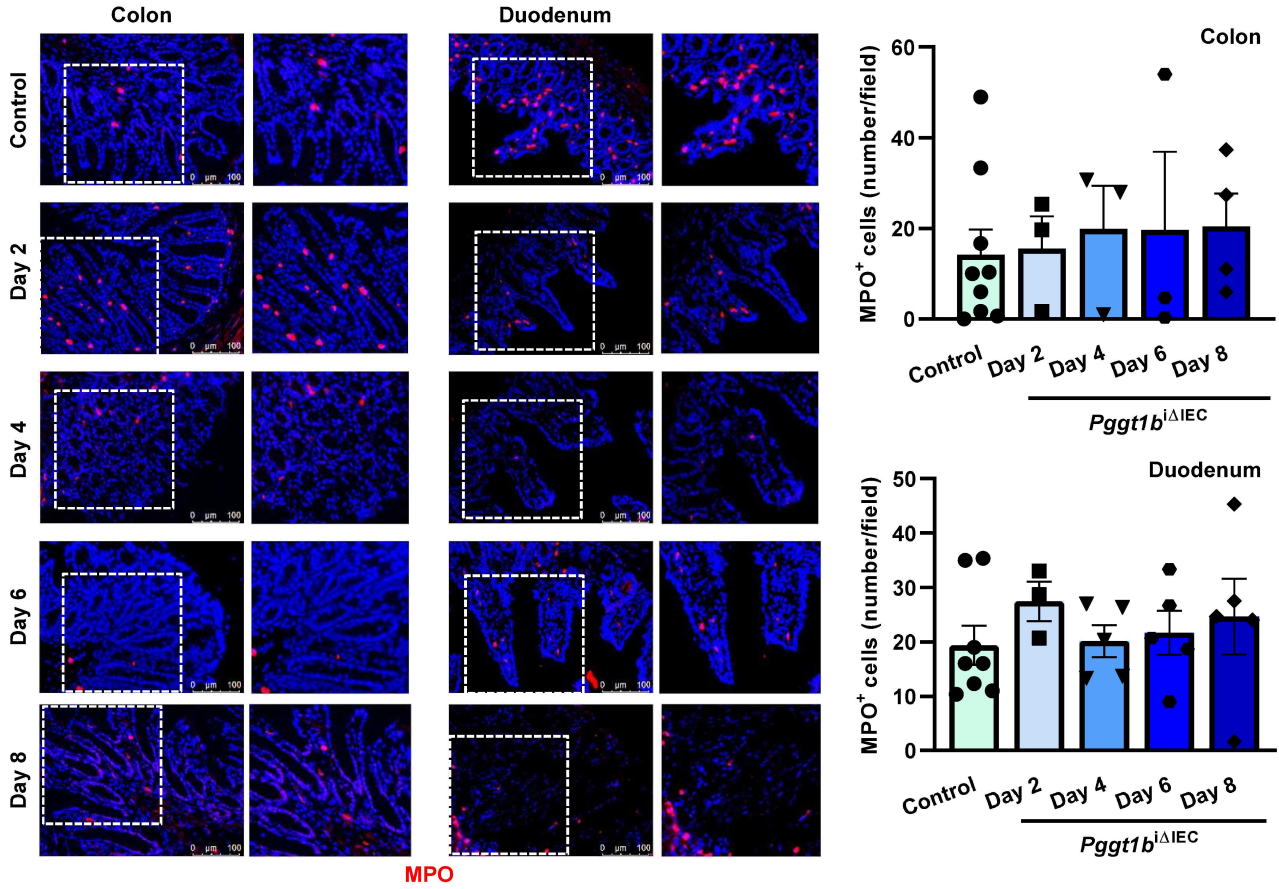
Suppl. Figure 1: Time-dependent generation of GGTase conditoinal KO mice

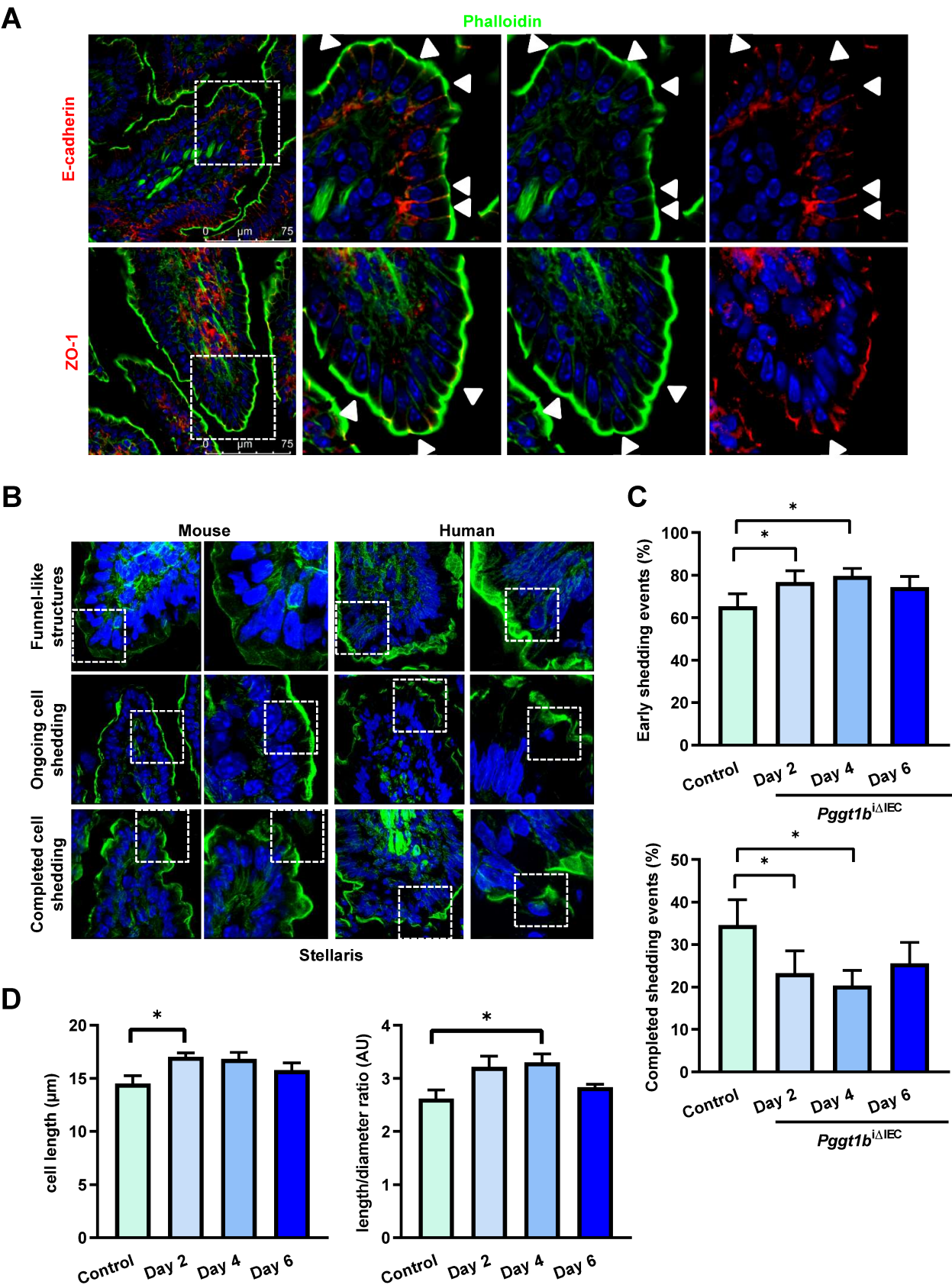


Suppl. Figure 1: Time-dependent generation of GGase conditional KO mice

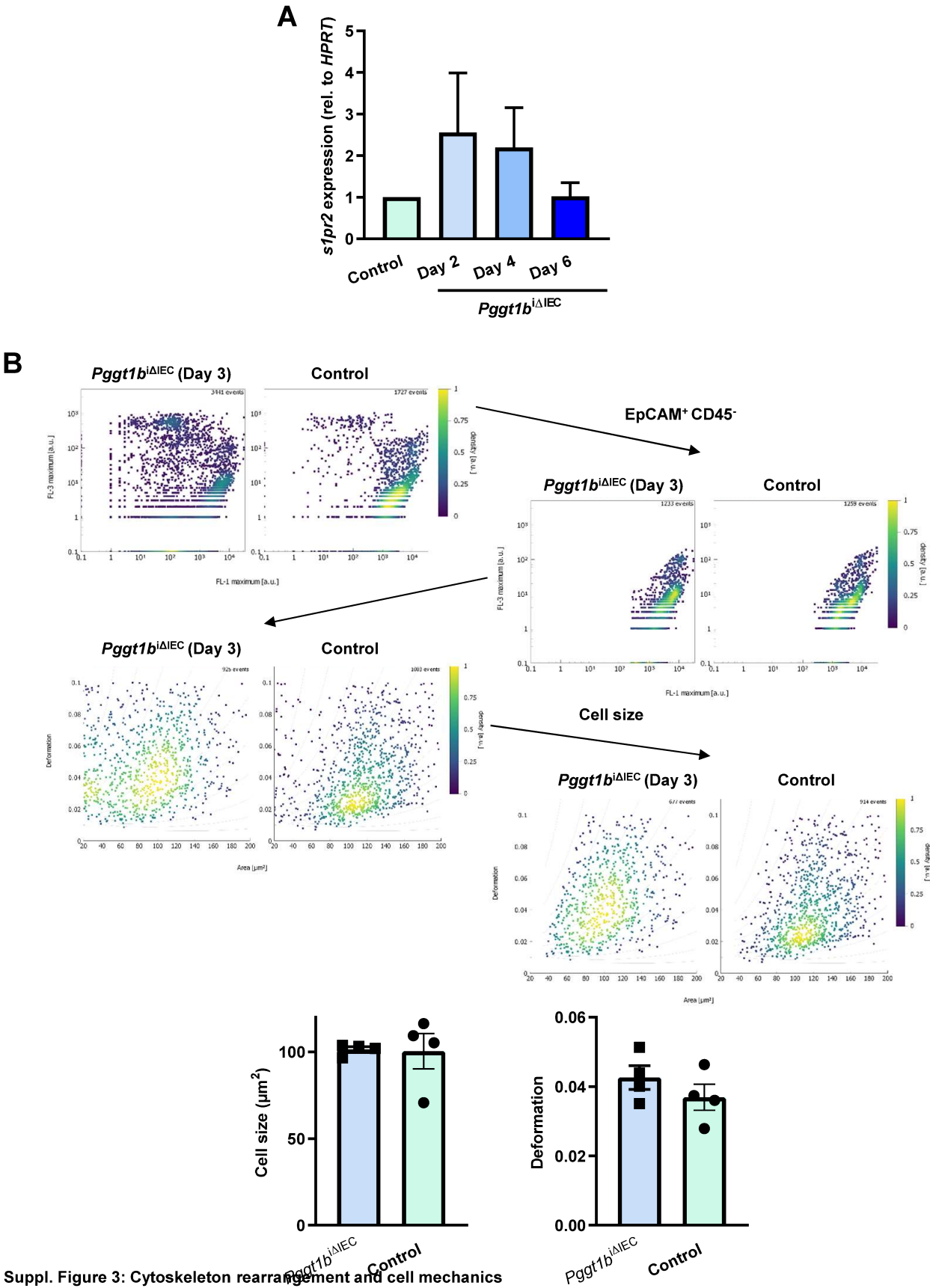


F

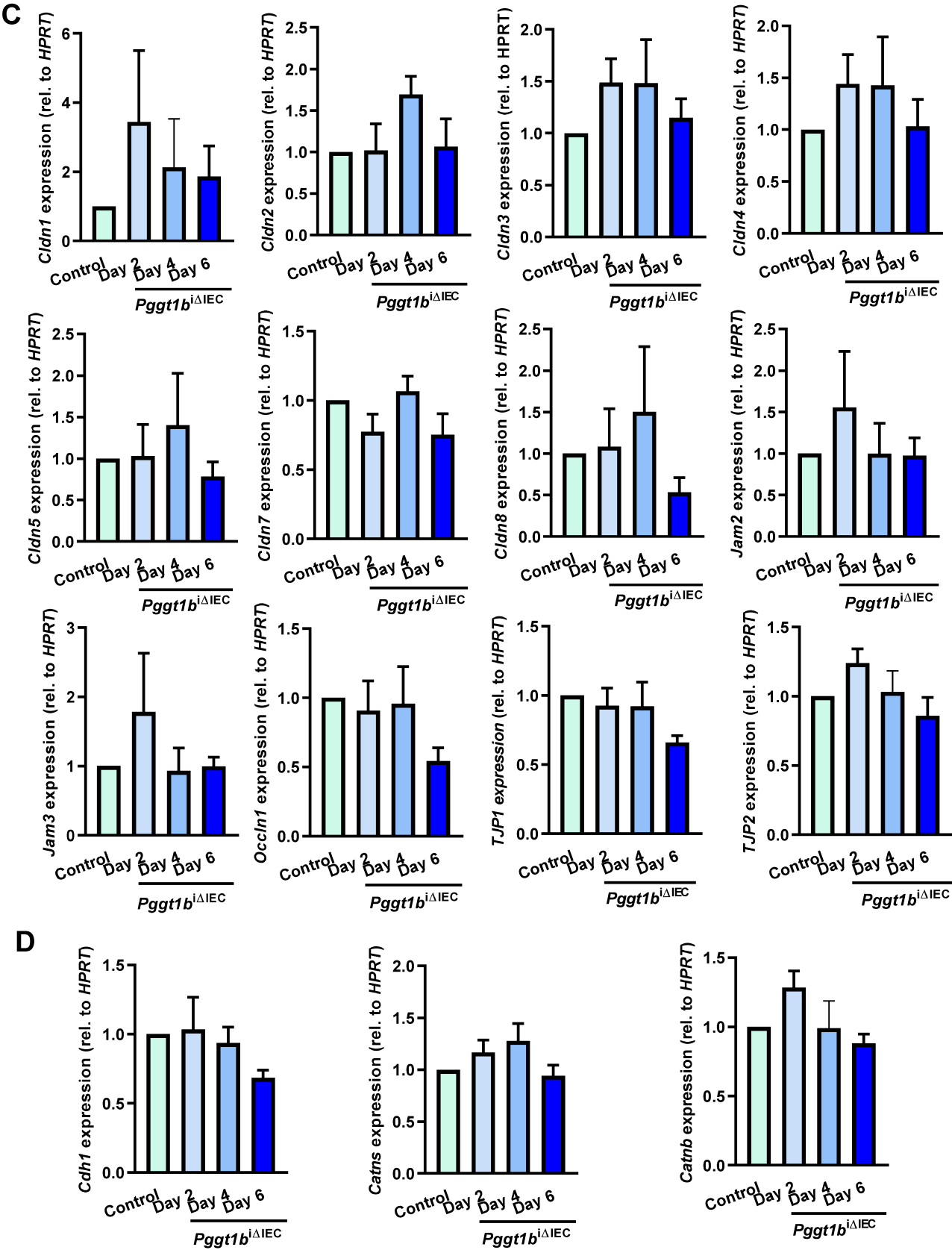




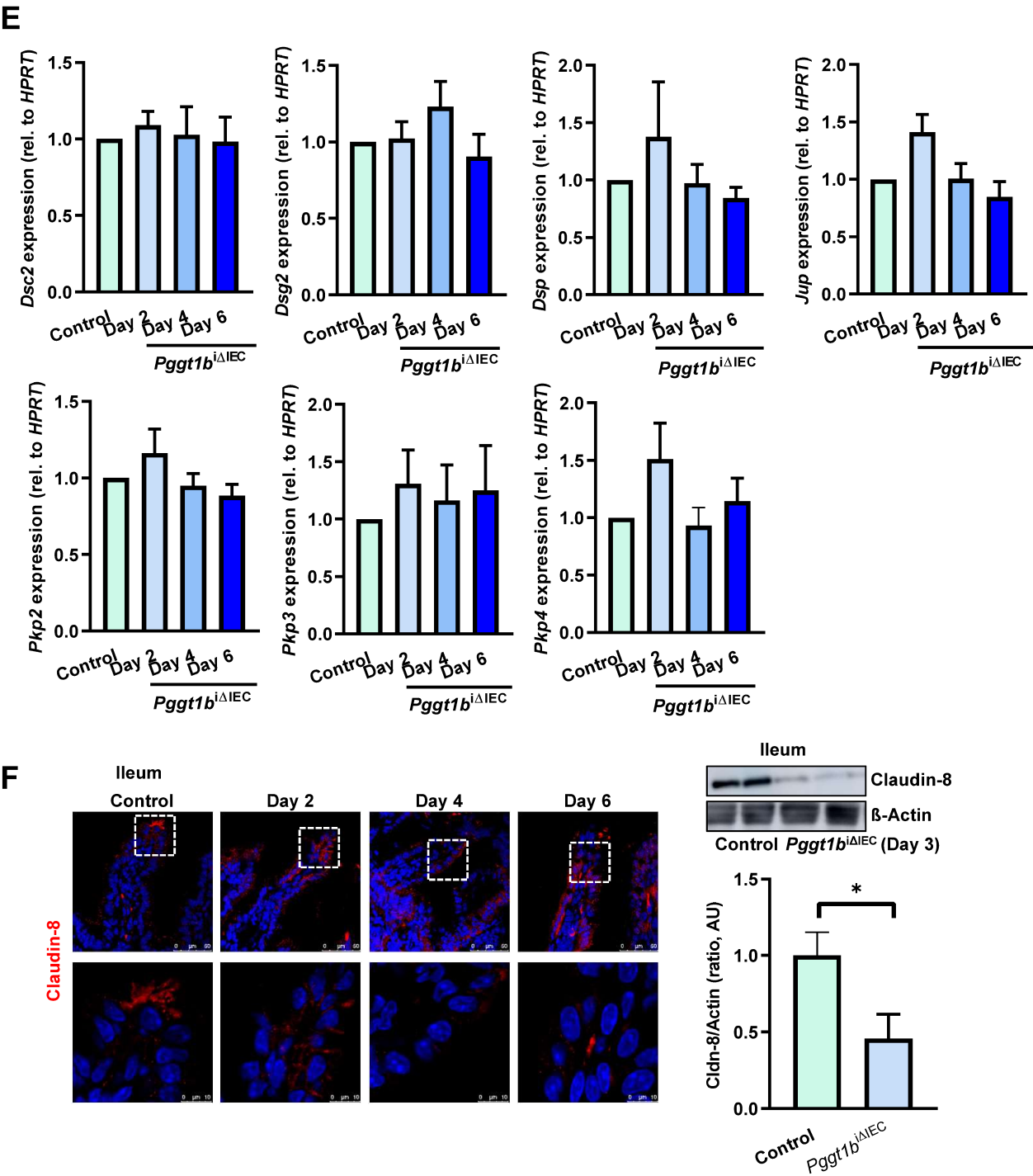
Suppl. Figure 2: Cell shedding alterations



Suppl. Figure 3: Cytoskeleton rearrangement and cell mechanics



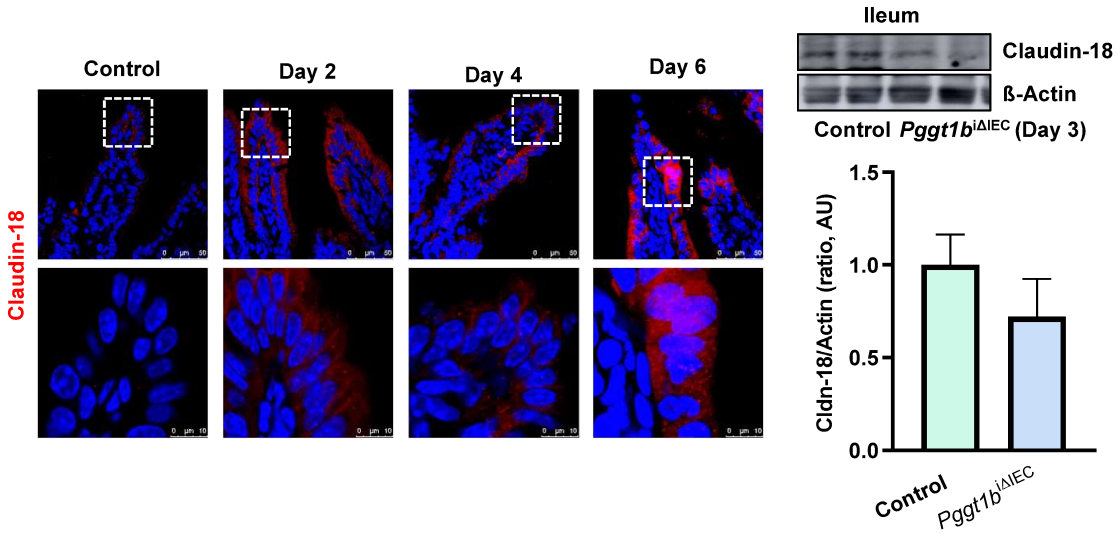
Suppl. Figure 3: Cytoskeleton rearrangement and cell mechanics



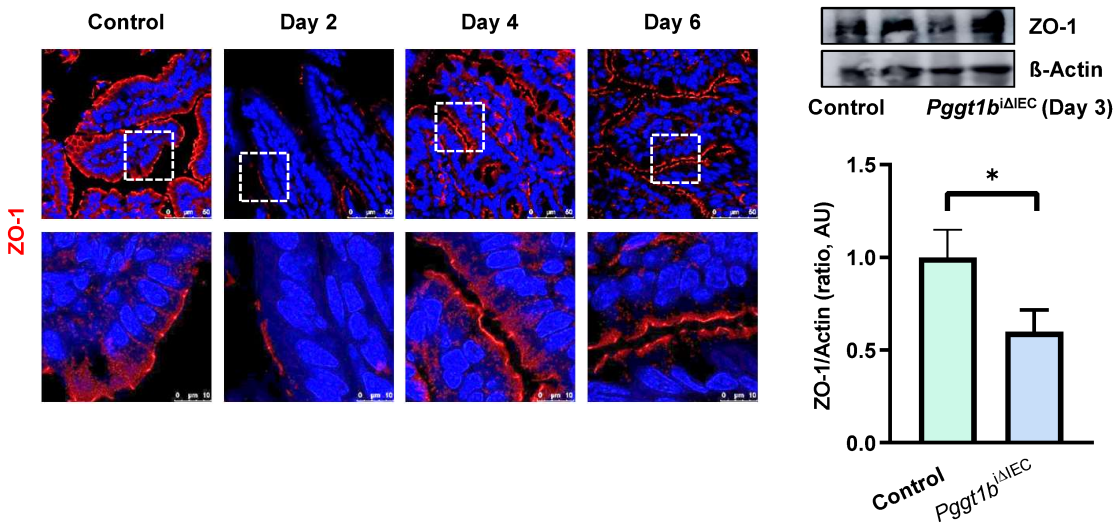
Suppl. Figure 3: Cytoskeleton rearrangement and cell mechanics



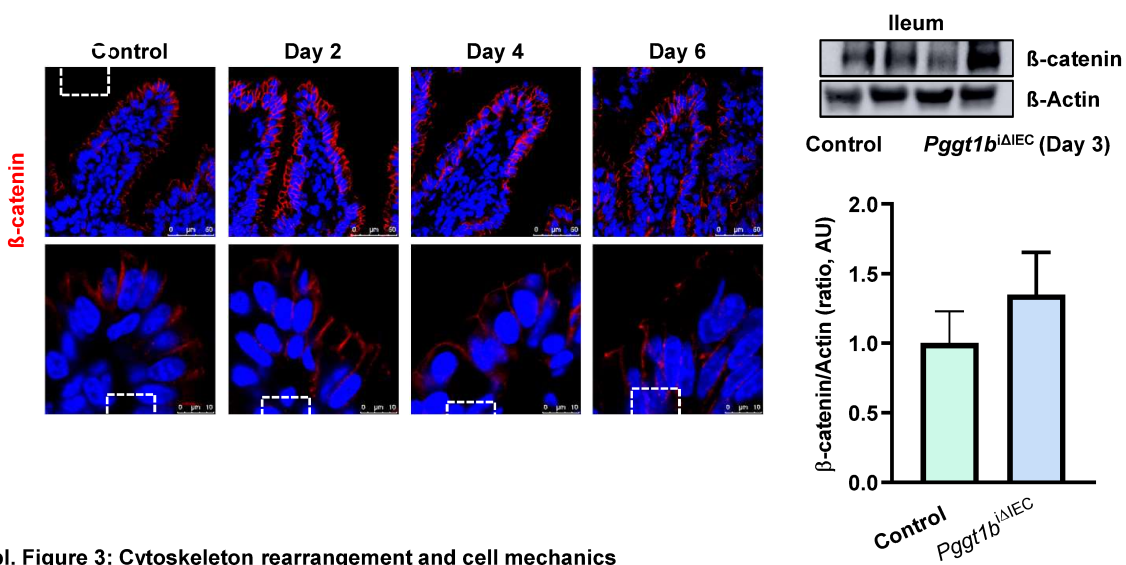
G



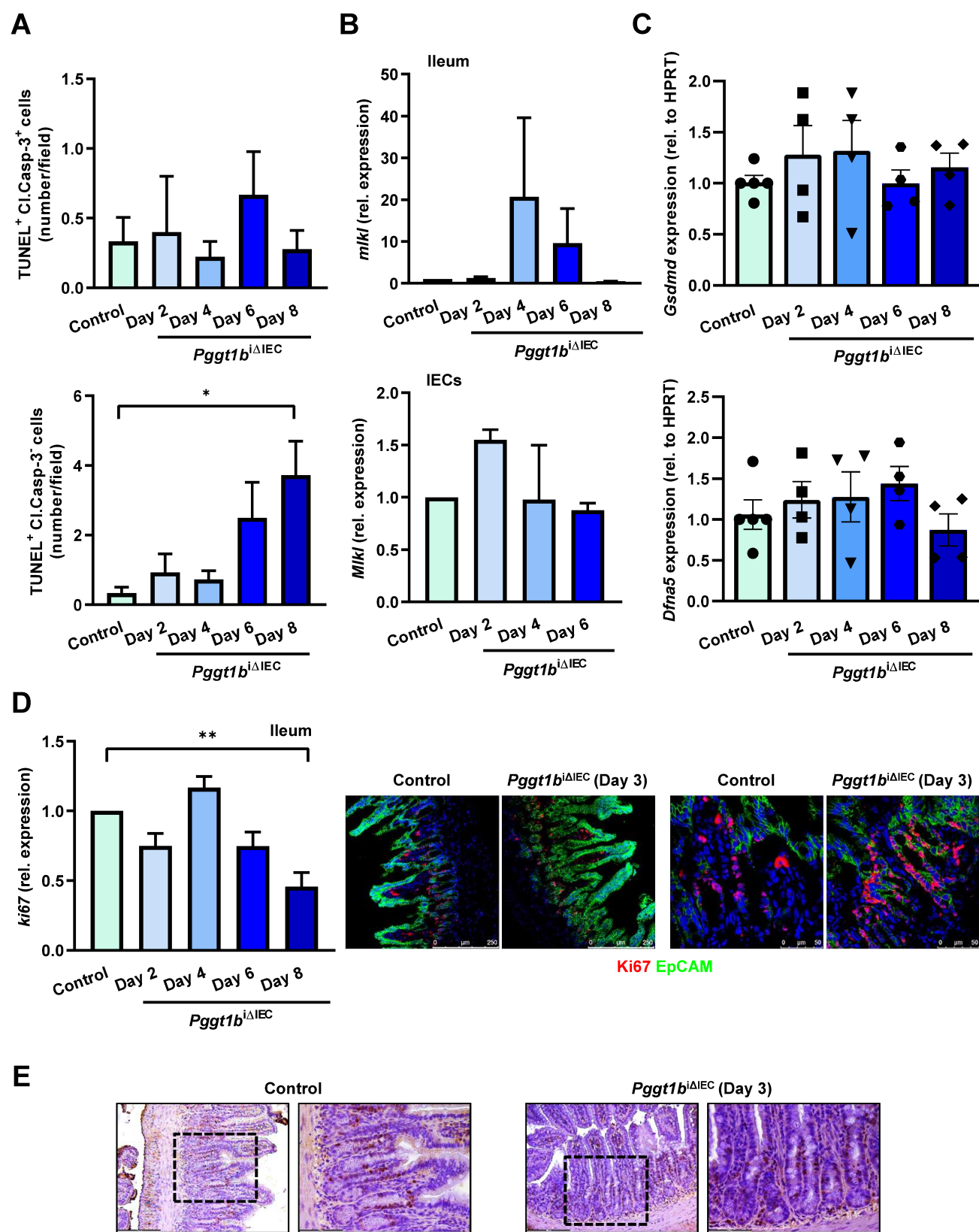
H



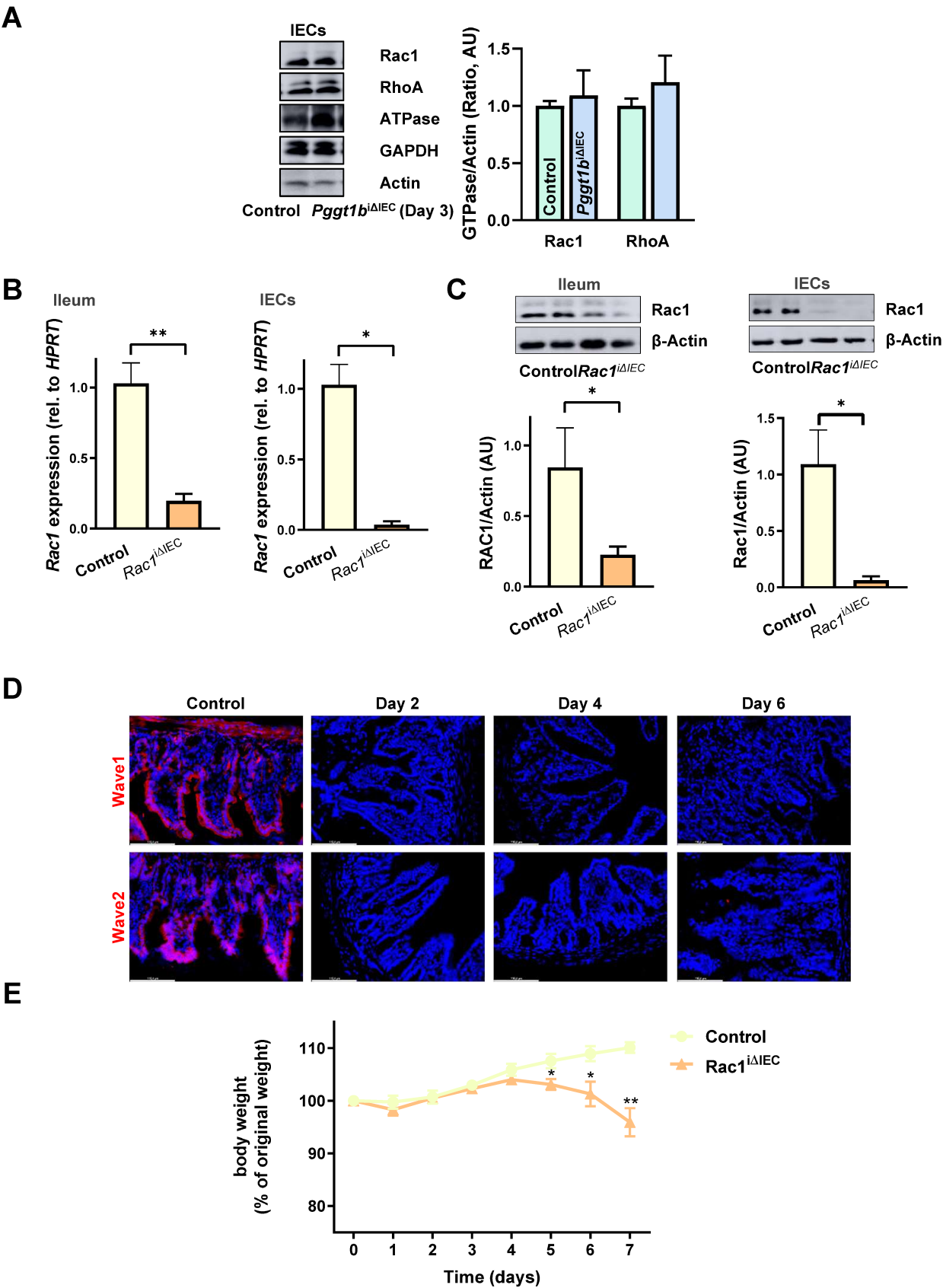
I



Suppl. Figure 3: Cytoskeleton rearrangement and cell mechanics

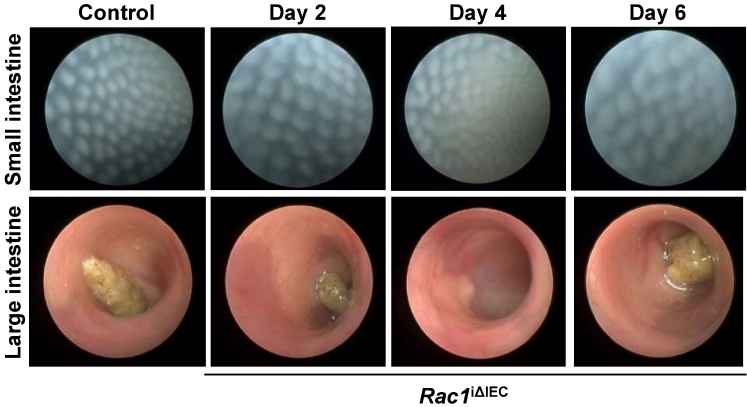


Suppl. Figure 4: Alternative molecular mechanisms in GGTase conditional KO mice

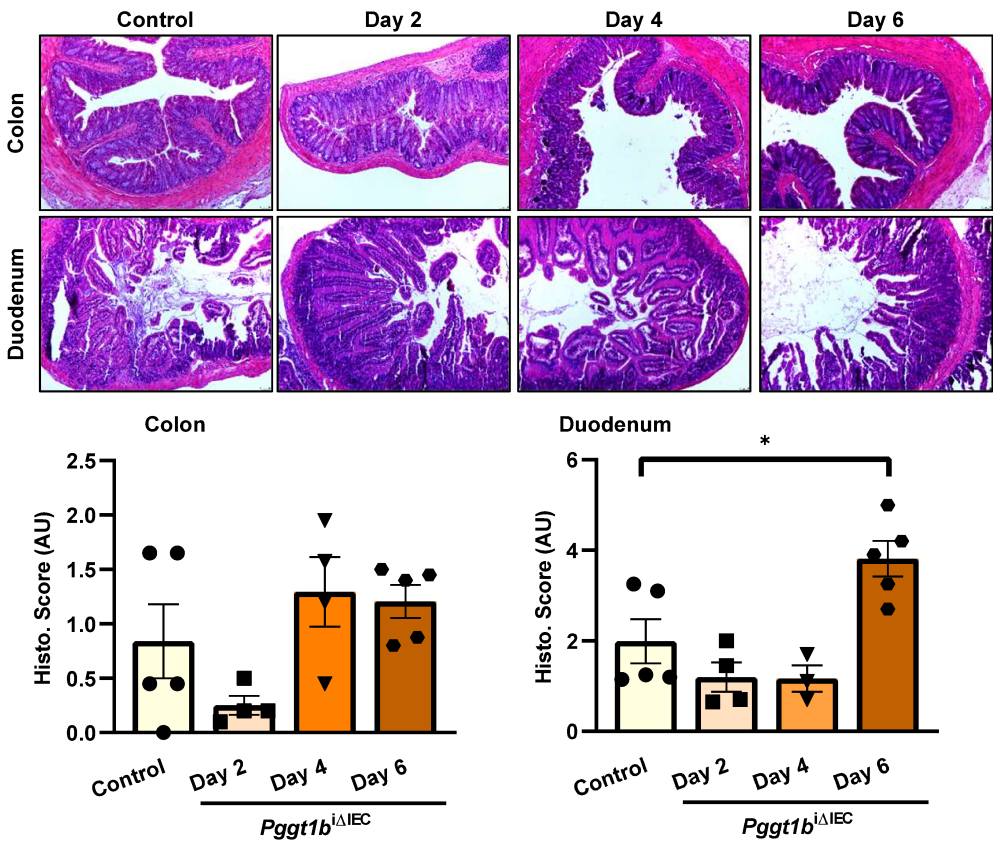


Suppl. Fig. 5: Rac1 conditional knock-out mice

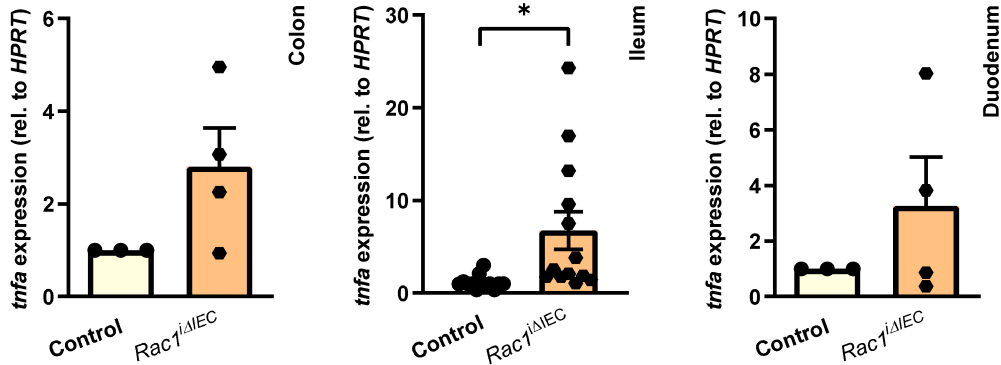
F



G

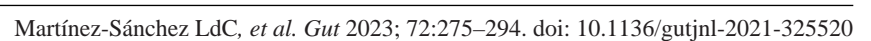


H



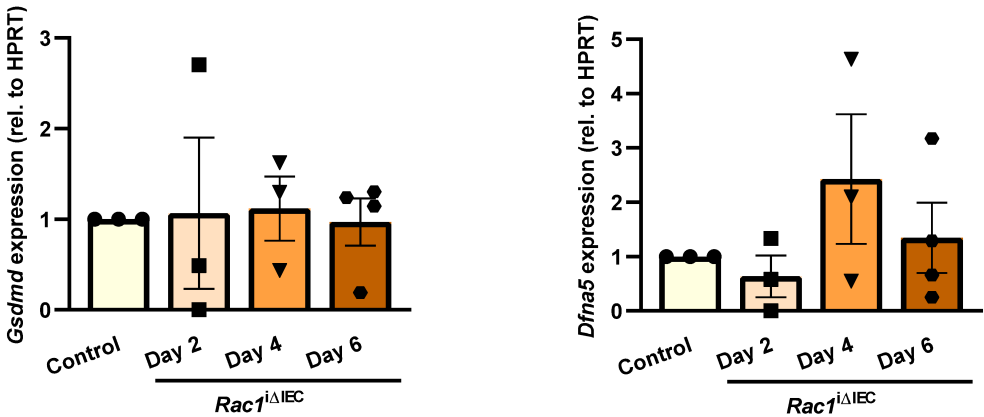
Suppl. Fig. 5: *Rac1* conditional knock-out mice



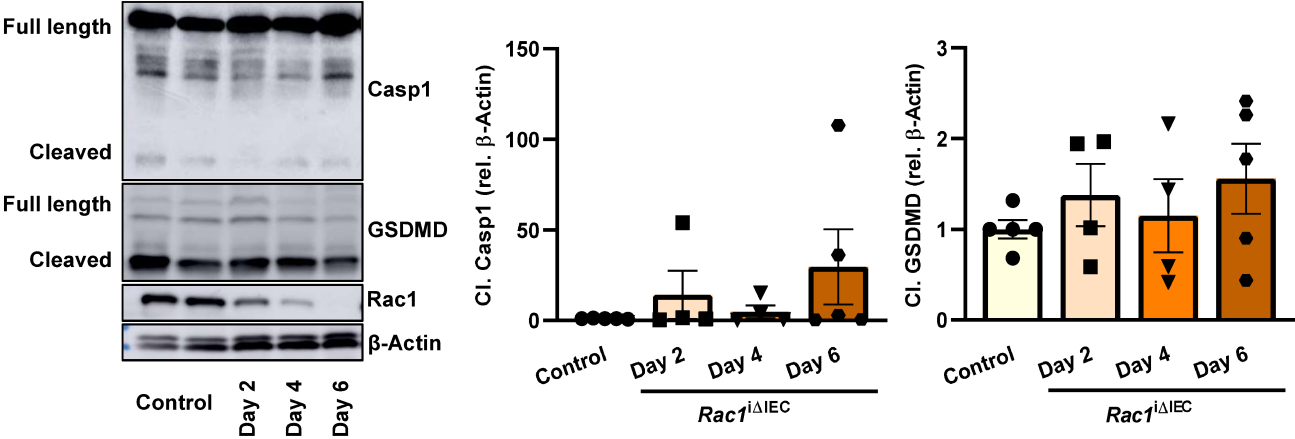




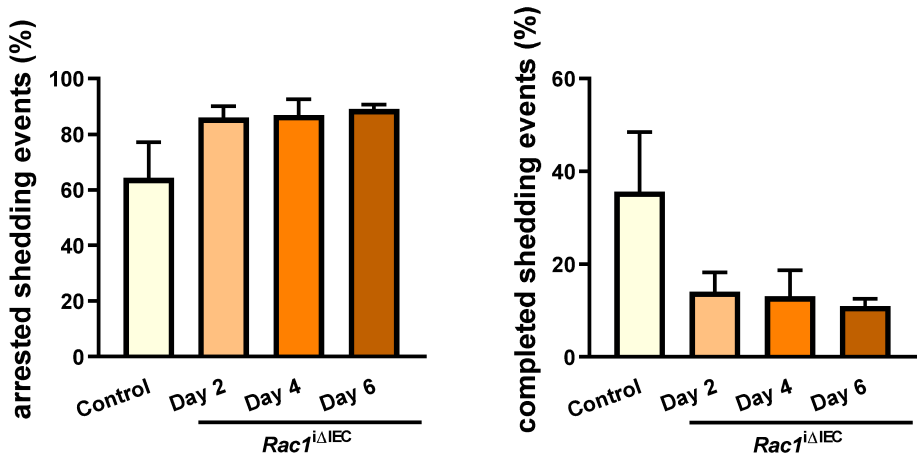
M



N

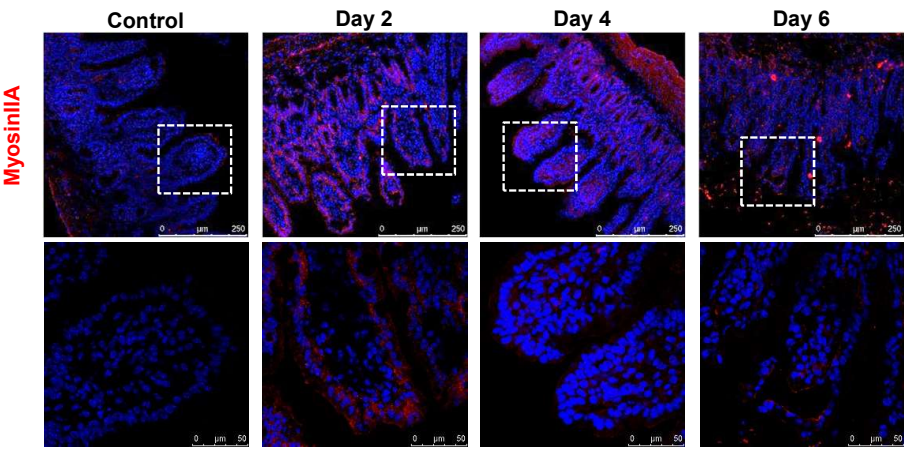


O

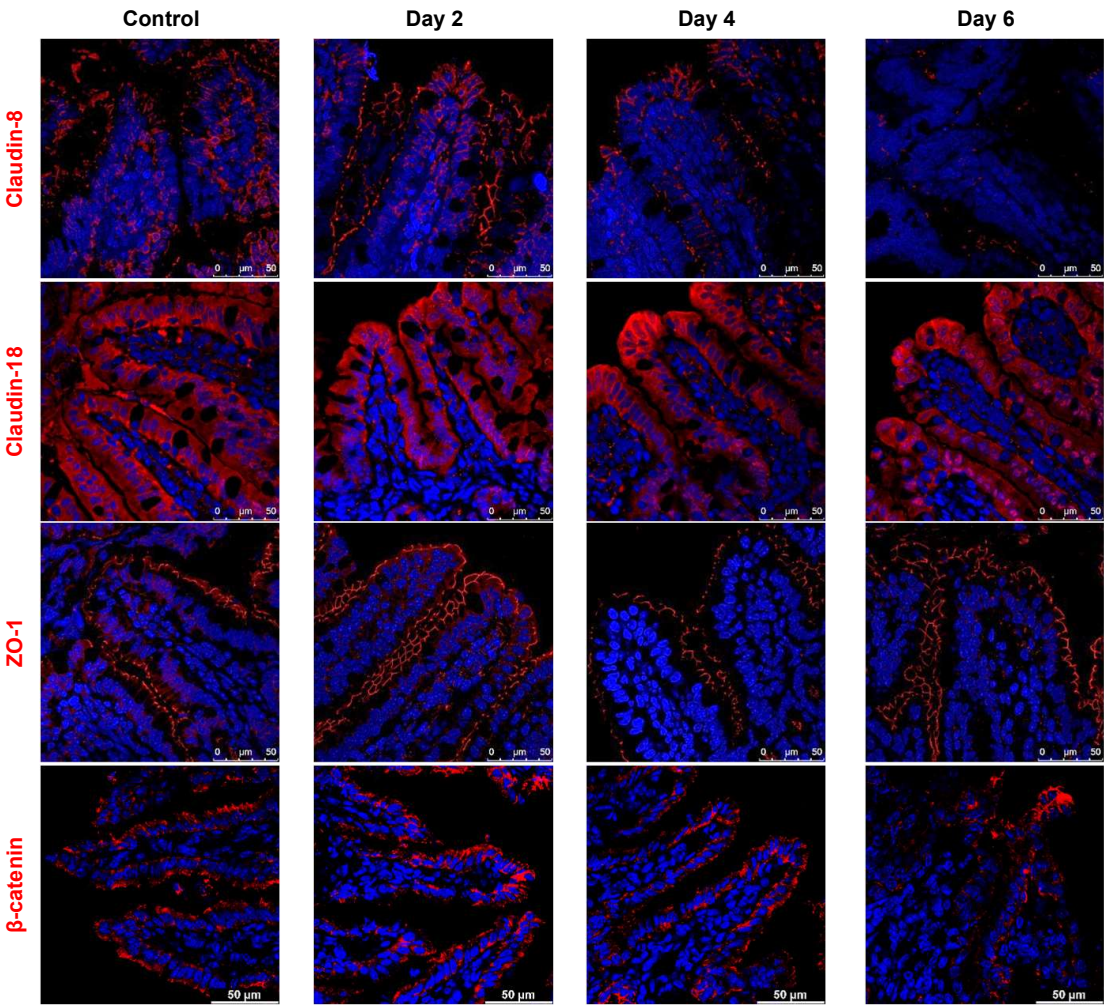


Suppl. Fig. 5: Rac1 conditional knock-out mice

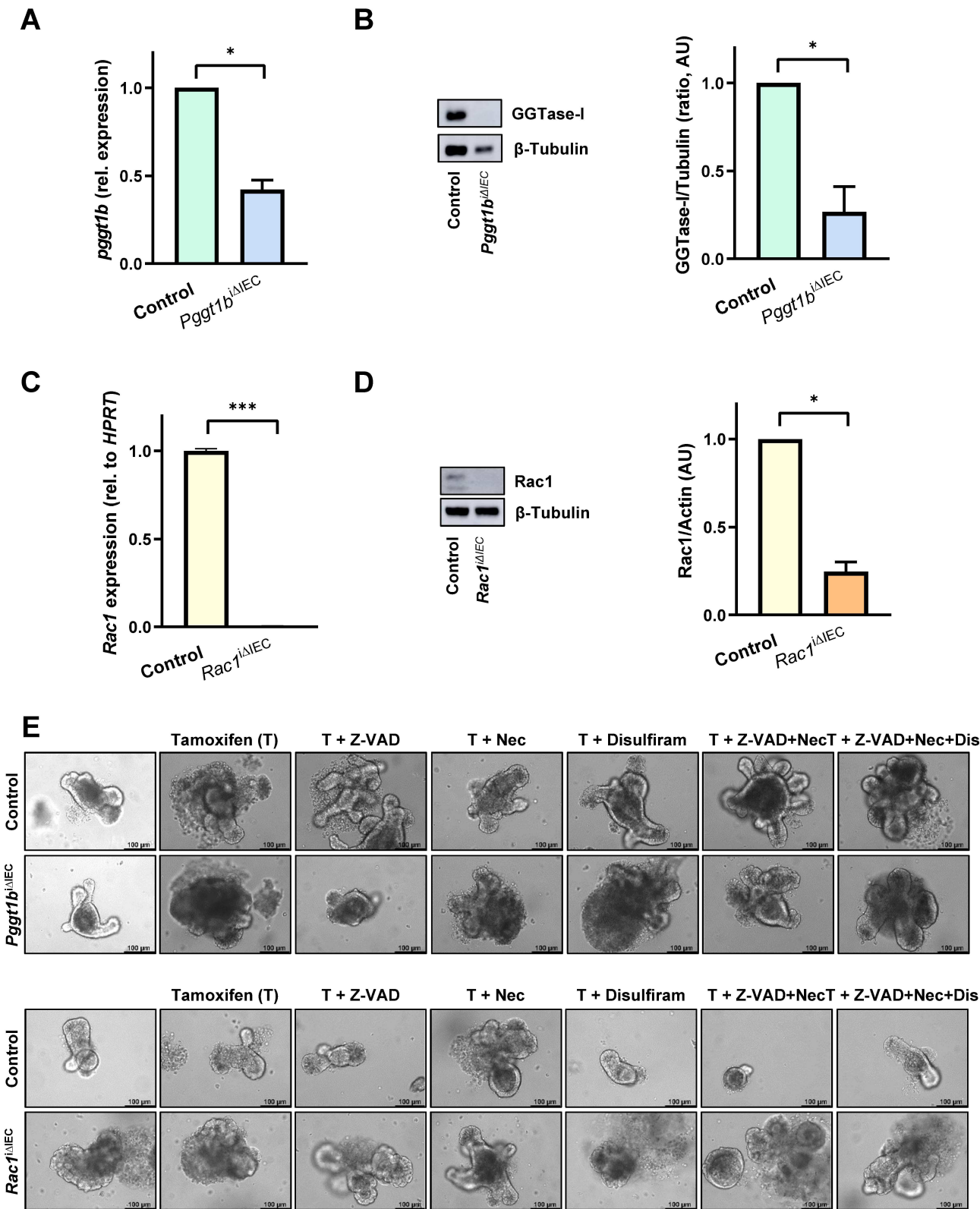
P



Q

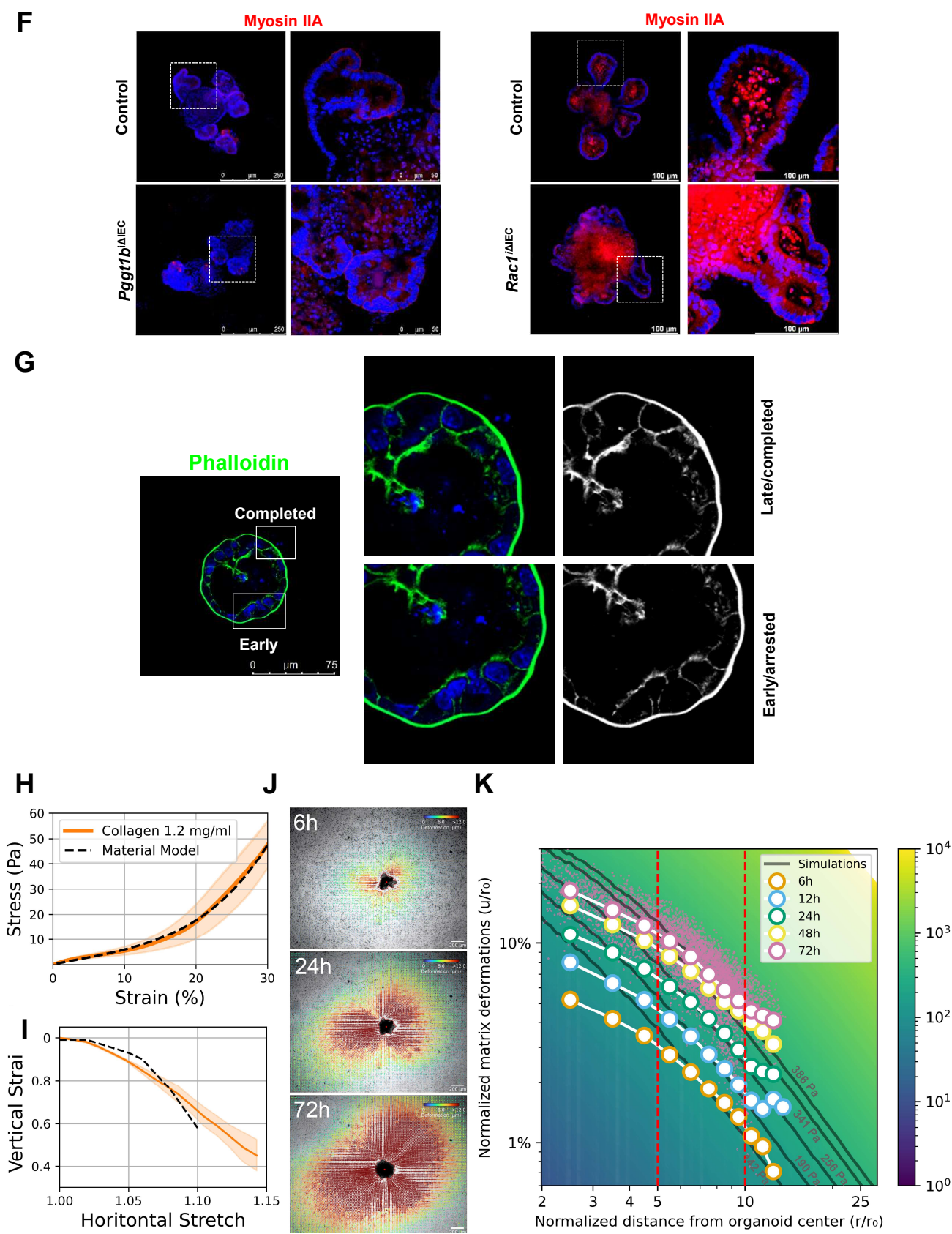


Suppl. Fig. 5: Rac1 conditional knock-out mice



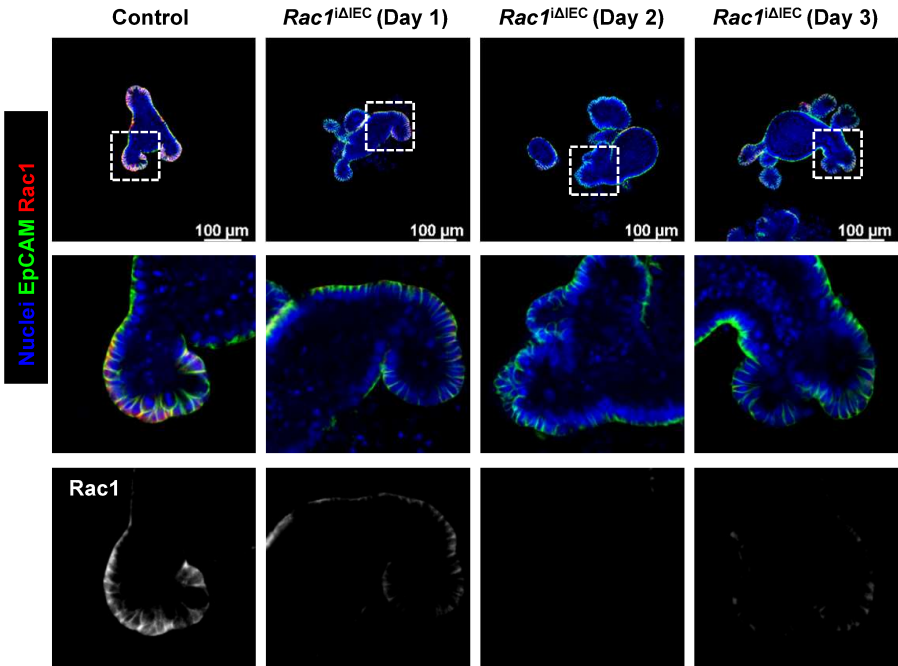
Suppl. Fig. 6: Organoids



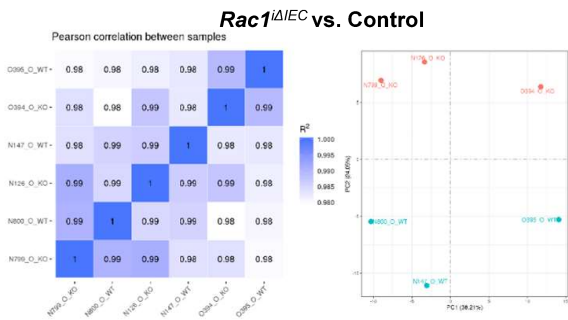


Suppl. Fig. 6: Organoids

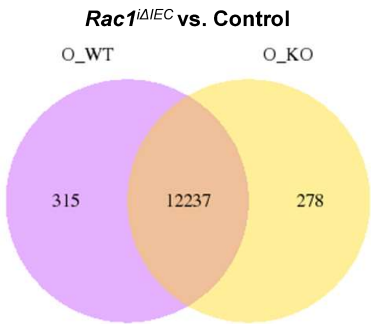
L



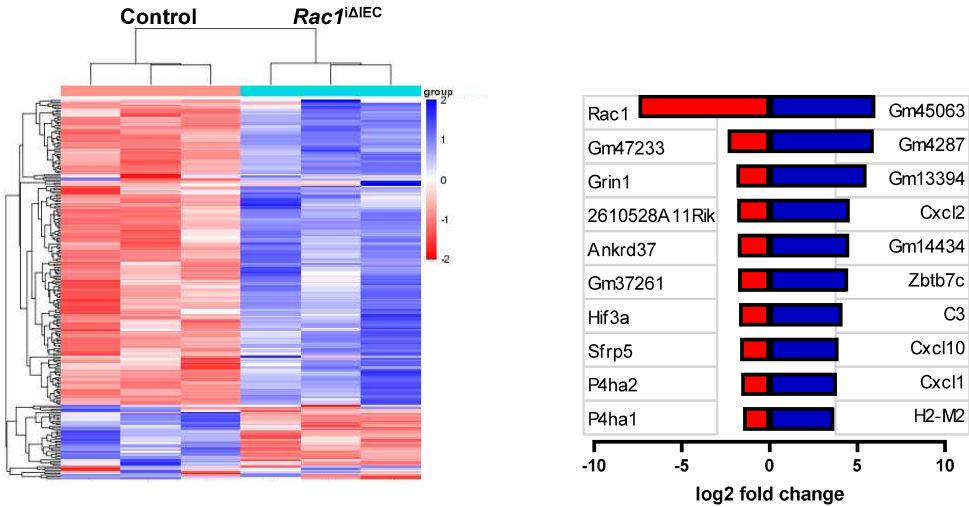
M



N

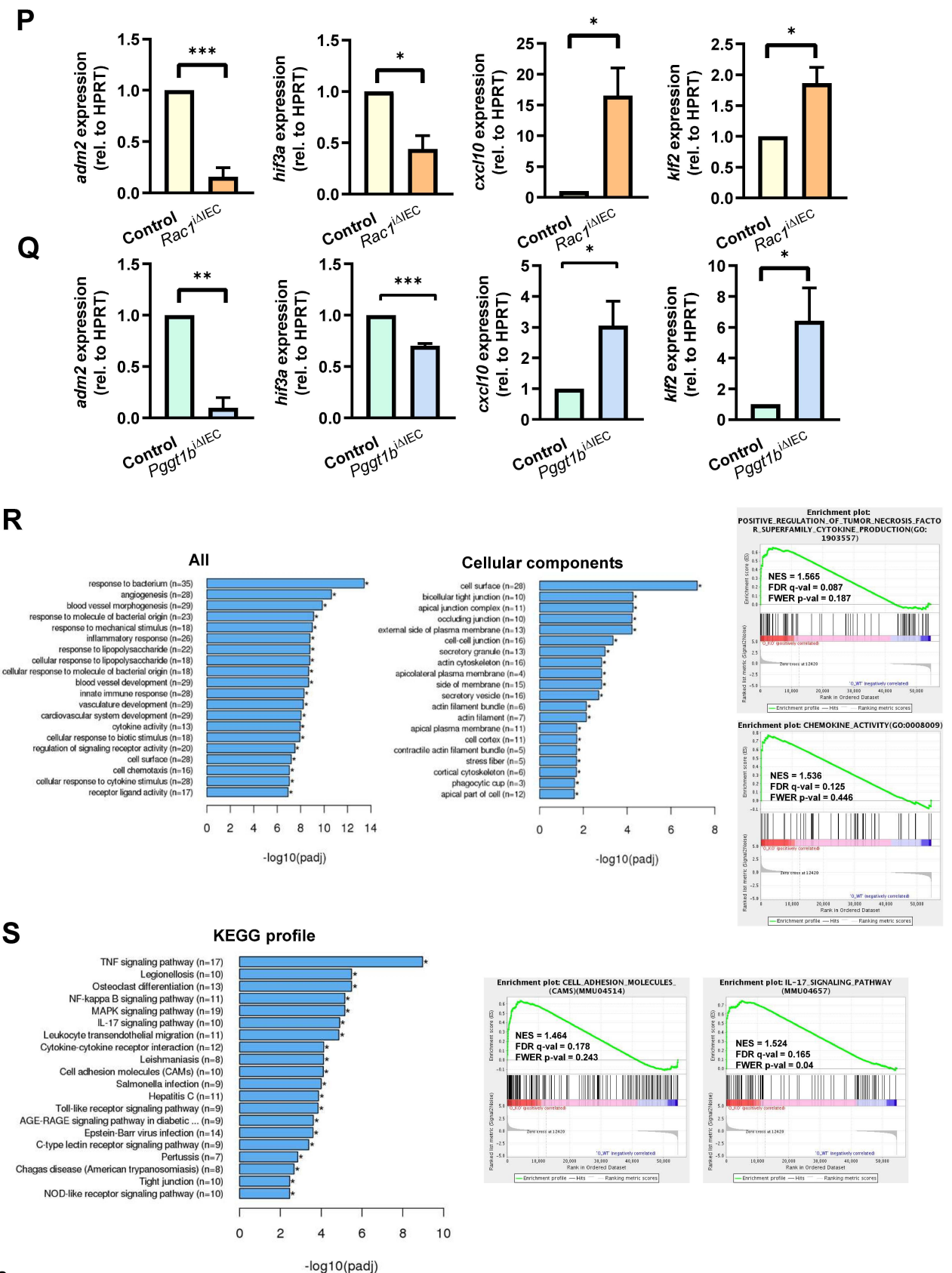


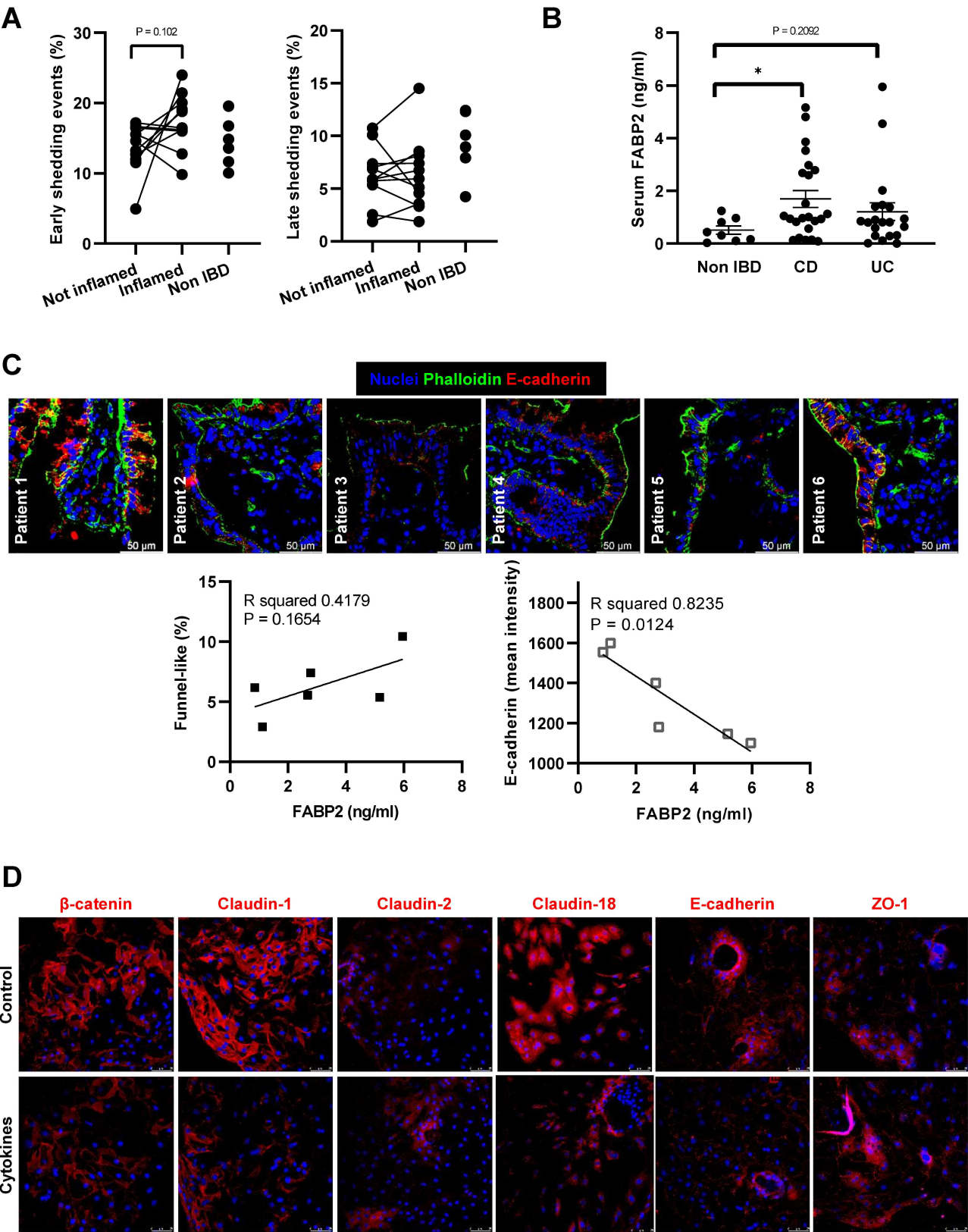
O



Suppl. Fig. 6: Organoids



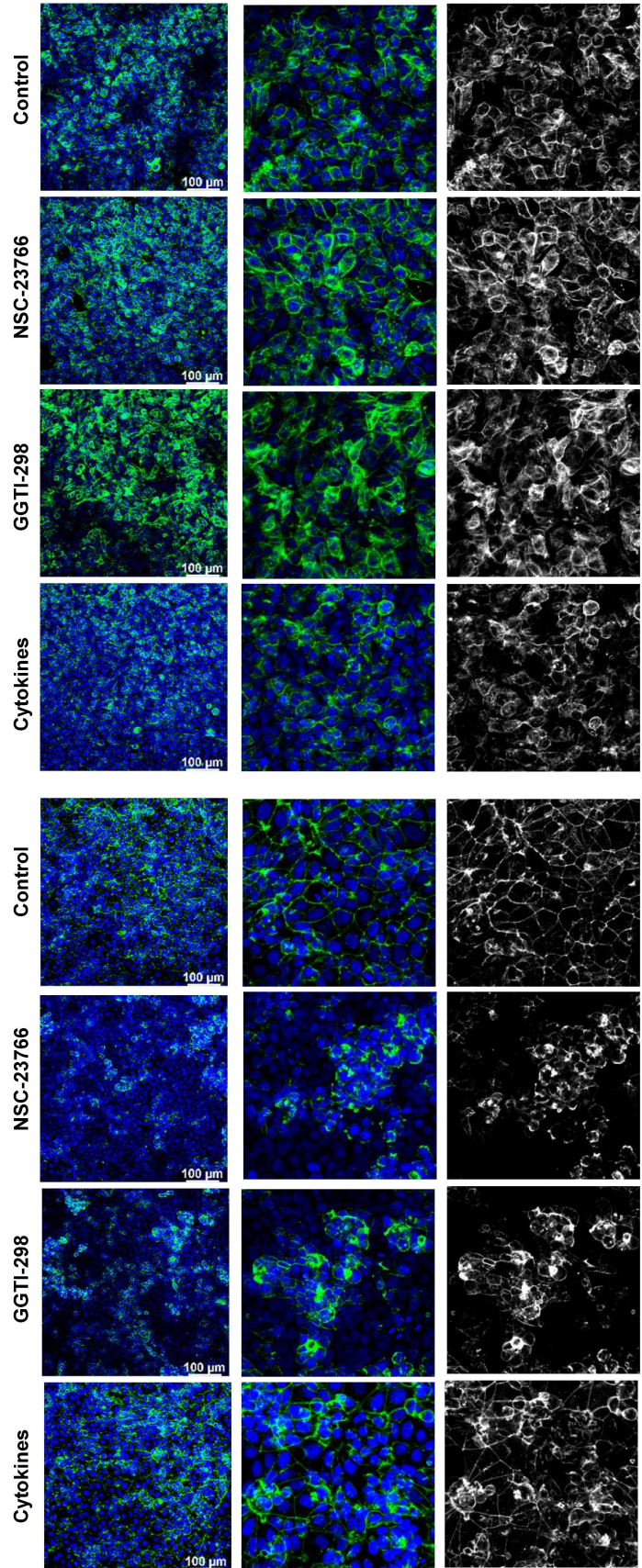
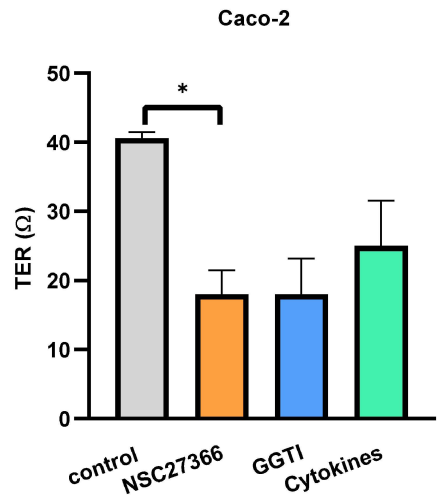
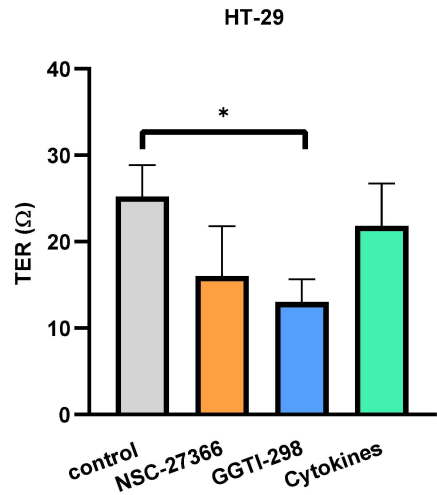




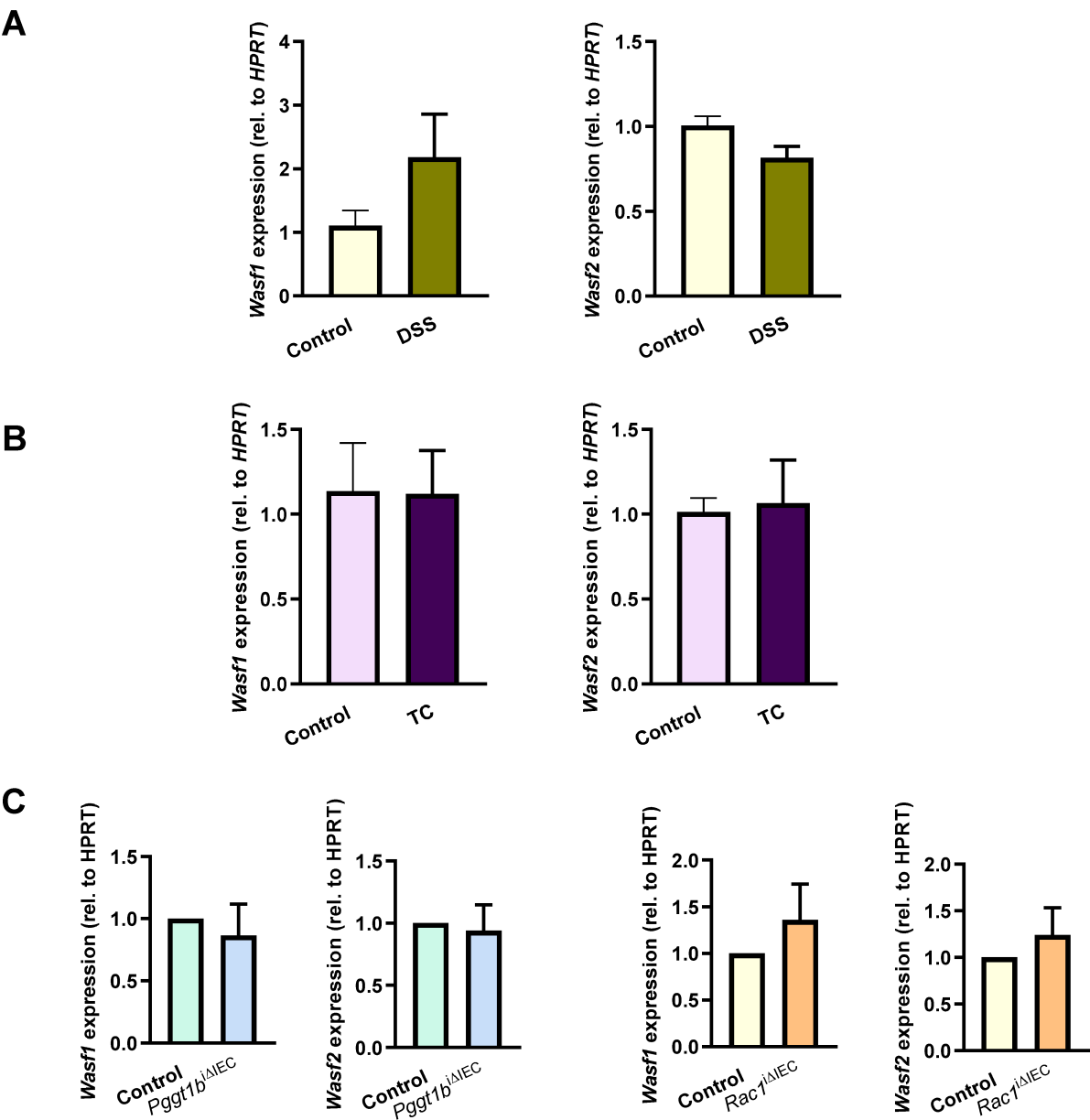
Suppl. Fig. 7: Cell shedding in IBD



E



Suppl. Fig. 7: Cell shedding in IBD



Supplementay Figure 8: Human RAC1