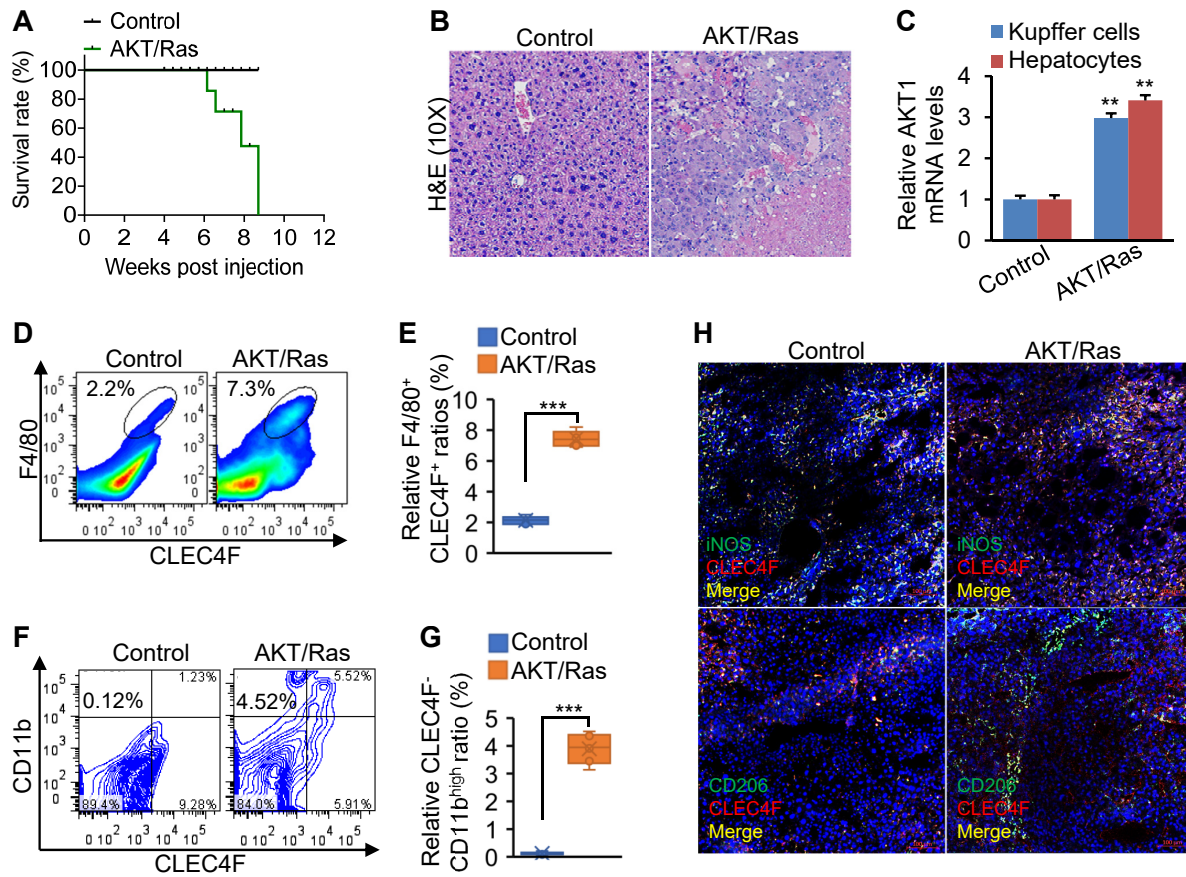


Supplemental Figure 1



Supplemental Figure 1 Hydrodynamic injection of AKT/Ras led to activation of AKT signaling in hepatocytes and KCs and triggered the development of lethal HCC. (A) Kaplan-Meier survival curves of FVB/NJ mice injected with pT3-EF1 α (Control, $n=6$) or AKT/Ras ($n=6$) (log-rank test). **(B)** H&E staining (10X) of livers in two groups of mice. **(C)** qRT-PCR quantitation of *AKT1* mRNA levels in hepatocytes and KCs in two groups of mice (Mann-Whitney test). **(D-G)** Total numbers of KCs (CLEC4F $^+$ F4/80 $^+$) and infiltrating macrophages (CD11b $^{\text{high}}$ CLEC4F $^-$) in FVB/NJ mice injected with pT3-EF1 α (Control, $n=6$, 5 w.p.i) or AKT/Ras ($n=6$, 5 w.p.i) (Mann-Whitney test). w.p.i: weeks post injection. **(H)** Immunostaining of iNOS, CD206 and CLEC4F (10X) in livers of two groups of mice (Mann-Whitney test). Data represent mean \pm SEM. ** $p < 0.01$. Scale bar: 100 μm .