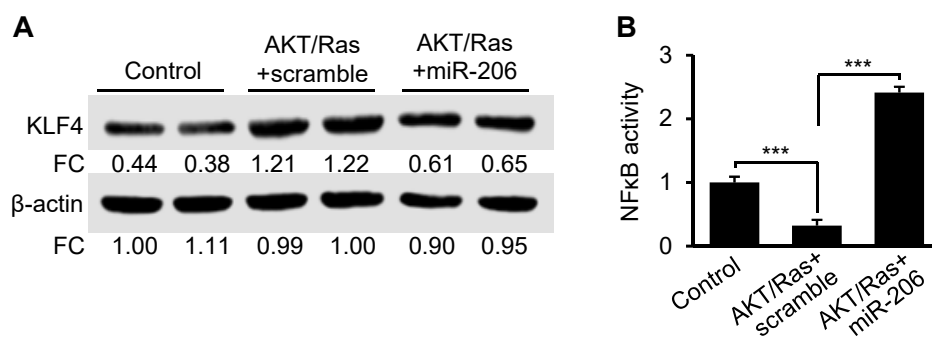


## Supplemental Figure 12



**Supplemental Figure 12 KC-specific expression of miR-206 normalized the KLF4-NFκB axis that was dysregulated in AKT/Ras mice. (A)** Protein levels of KLF4 in KCs of FVB/NJ mice injected with pT3-EF1α (control, 5 w.p.i), AKT/Ras/pT3-CD68p-scramble (5 w.p.i), or AKT/Ras/pT3-CD68p-miR-206 (5 w.p.i) (two-way ANOVA test). **(B)** NF-κB activity in KCs of three groups of mice (two-way ANOVA test). We combined Percoll density gradient centrifugation and flow cytometry to isolate KCs from three groups of mice. The NF-κB activity in KCs was evaluated by NF-κB (p65) Transcription Factor Assay Kit. Data represent mean ± SEM. \*\*\* $p < 0.001$ .