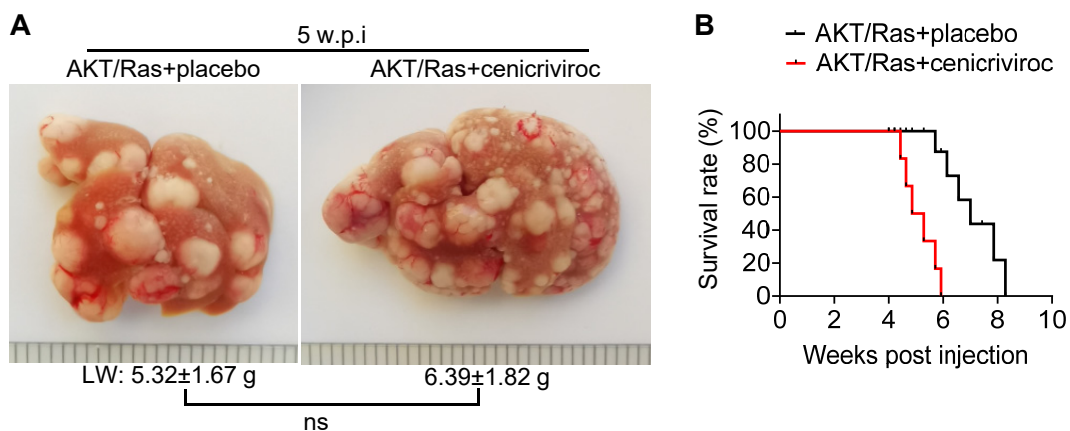


Supplemental Figure 16



Supplemental Figure 16 CCR2 antagonist slightly promoted growth of HCC in AKT/Ras mice. (A) Macroscopic appearance of livers from AKT/Ras mice treated with placebo ($n=6$, 5 w.p.i) and cenicriviroc ($n=6$, 5 w.p.i) (Mann-Whitney U test). LW: liver weight. (B) Kaplan Meier survival curves of AKT/Ras mice injected with placebo ($n=6$) and cenicriviroc ($n=6$) (log-rank test). Data represent mean \pm SEM. ns: no significance.