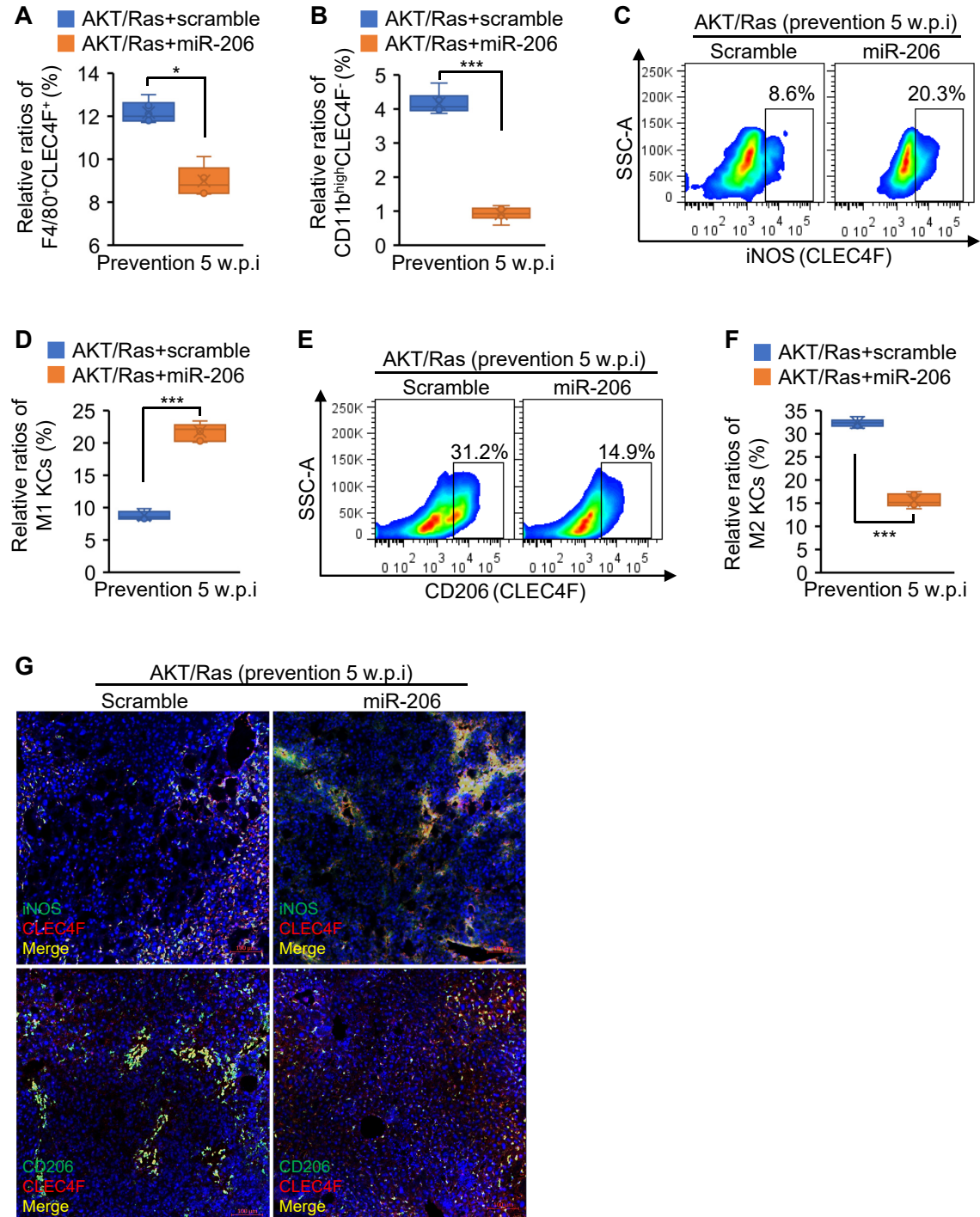


Supplemental Figure 4



Supplemental Figure 4 KC-specific expression of miR-206 drove M2 to M1 switch of KCs in AKT/Ras mice. (A-B) Total number of KCs (CLEC4F⁺F4/80⁺) and infiltrating macrophages (CD11b^{high} CLEC4F⁻) in livers of AKT/Ras mice injected with pT3-CD68p-scramble ($n=6$, 5 w.p.i) or pT3-CD68p-miR-206 ($n=6$, 5 w.p.i) (Mann-Whitney test). **(C-F)** The ratios of M1 or M2 KCs in livers of two groups of mice. **(G)** Immunostaining of iNOS, CD206 and CLEC4F (10X) in livers of two groups of mice. Data represent mean \pm SEM. * $p < 0.05$ and *** $p < 0.001$.