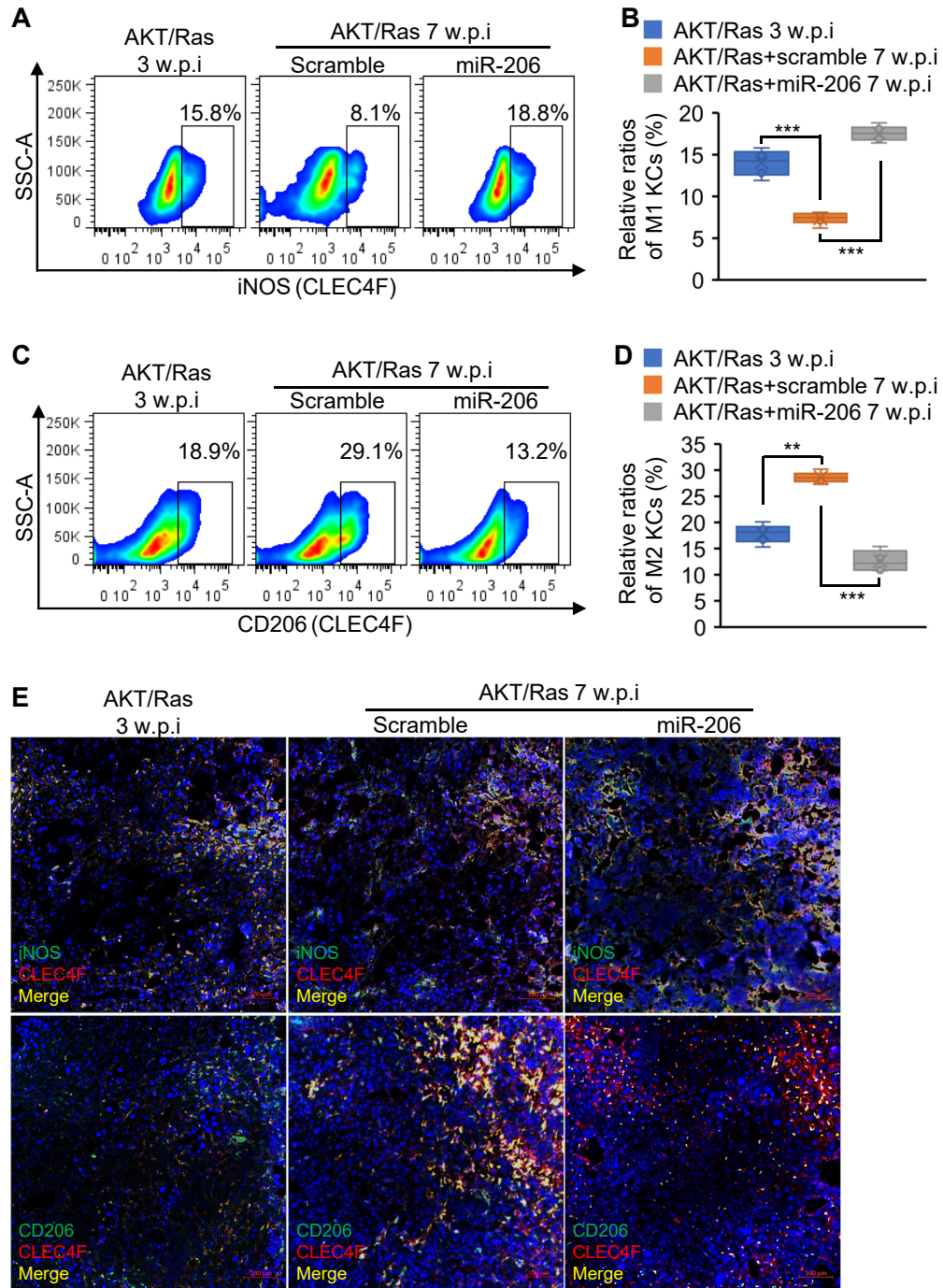


Supplemental Figure 5



Supplemental Figure 5 KC-specific expression of miR-206 drove M2 to M1 switch of KCs in AKT/Ras mice bearing HCC. (A-D) The ratios of M1 or M2 KCs in livers of AKT/Ras ($n=6$, 3 w.p.i), AKT/Ras/MC-CD68p-scramble ($n=6$, 7 w.p.i) and AKT/Ras/MC-CD68p-miR-206 ($n=6$, 7 w.p.i) mice (two-way ANOVA test). **(E)** Immunostaining of iNOS, CD206 and CLEC4F (10X) in livers of three groups of mice (low magnification) (two-way ANOVA test). Data represent mean \pm SEM. $**p < 0.01$ and $***p < 0.001$.