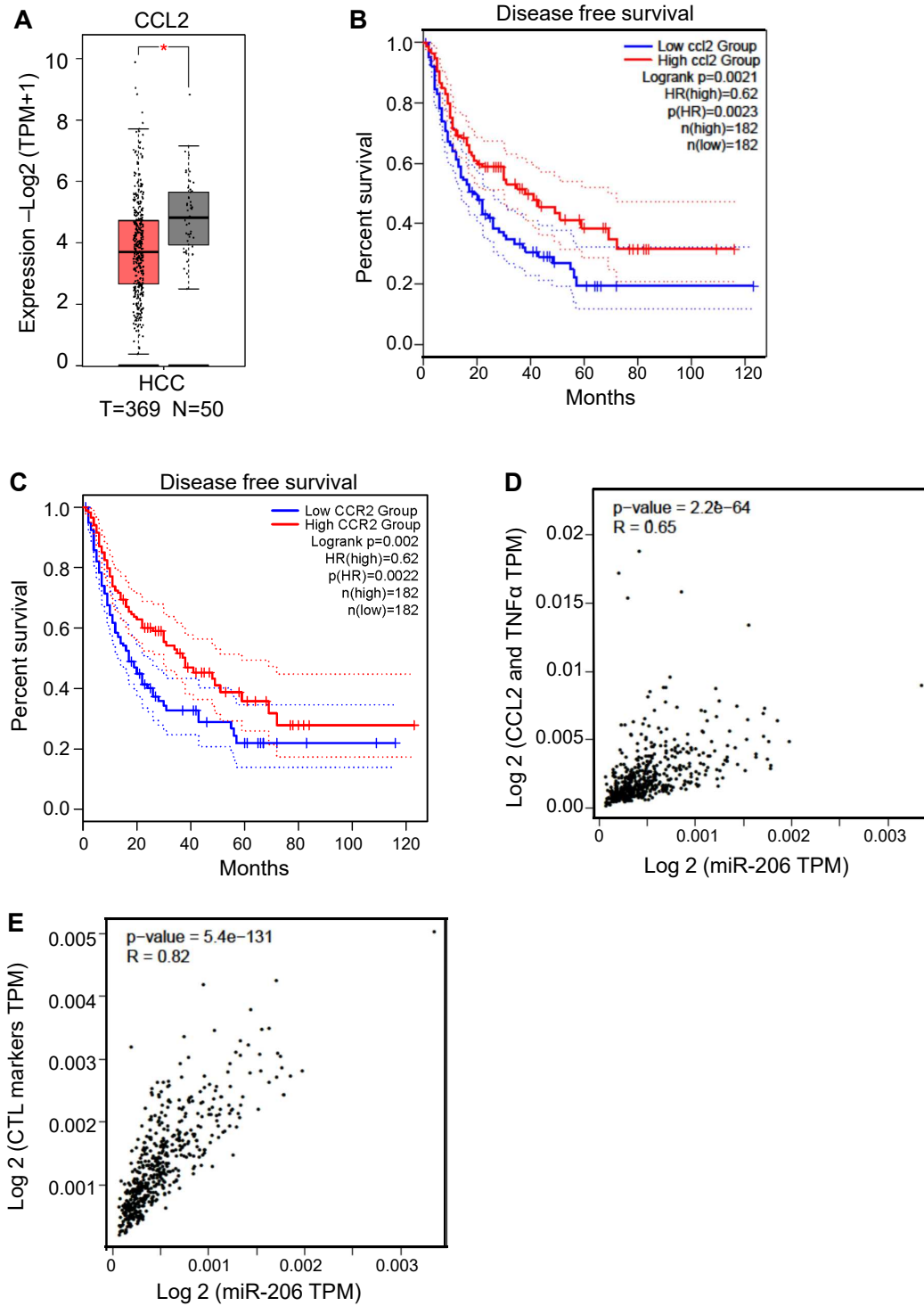


Supplemental Figure 8



Supplemental Figure 8 Levels of miR-206 were positively correlated with M1 markers and CTL signatures. (A) Reduced CCL2 in HCC patients from the TCGA database (T: Tumor; N: normal liver tissues). TPM: transcripts per million. Expression levels were shown as Log₂ (TPM+1) (two-tailed student's *t* test). (B) Low levels of CCL2 predicted a poor survival rate of HCC patients in the TCGA database. Survival rates of HCC patients were determined via Kaplan–Meier analysis based on the data from the TCGA database (log-rank test). (C) The association between CCR2 levels and survival of HCC patients was determined via Kaplan–Meier analysis based on the data from the TCGA database (log-rank test). (D) A positive correlation between miR-206 and M1 markers of macrophages (CCL2 and TNF α) in the TCGA HCC cohort. R = Spearman's correlation coefficient. TPM: Transcripts Per Million. (E) A positive correlation between miR-206 and CTL markers in the TCGA HCC cohort (two-tailed student's *t* test). R = Spearman's correlation coefficient. Data represent mean \pm SEM. **p* < 0.05.