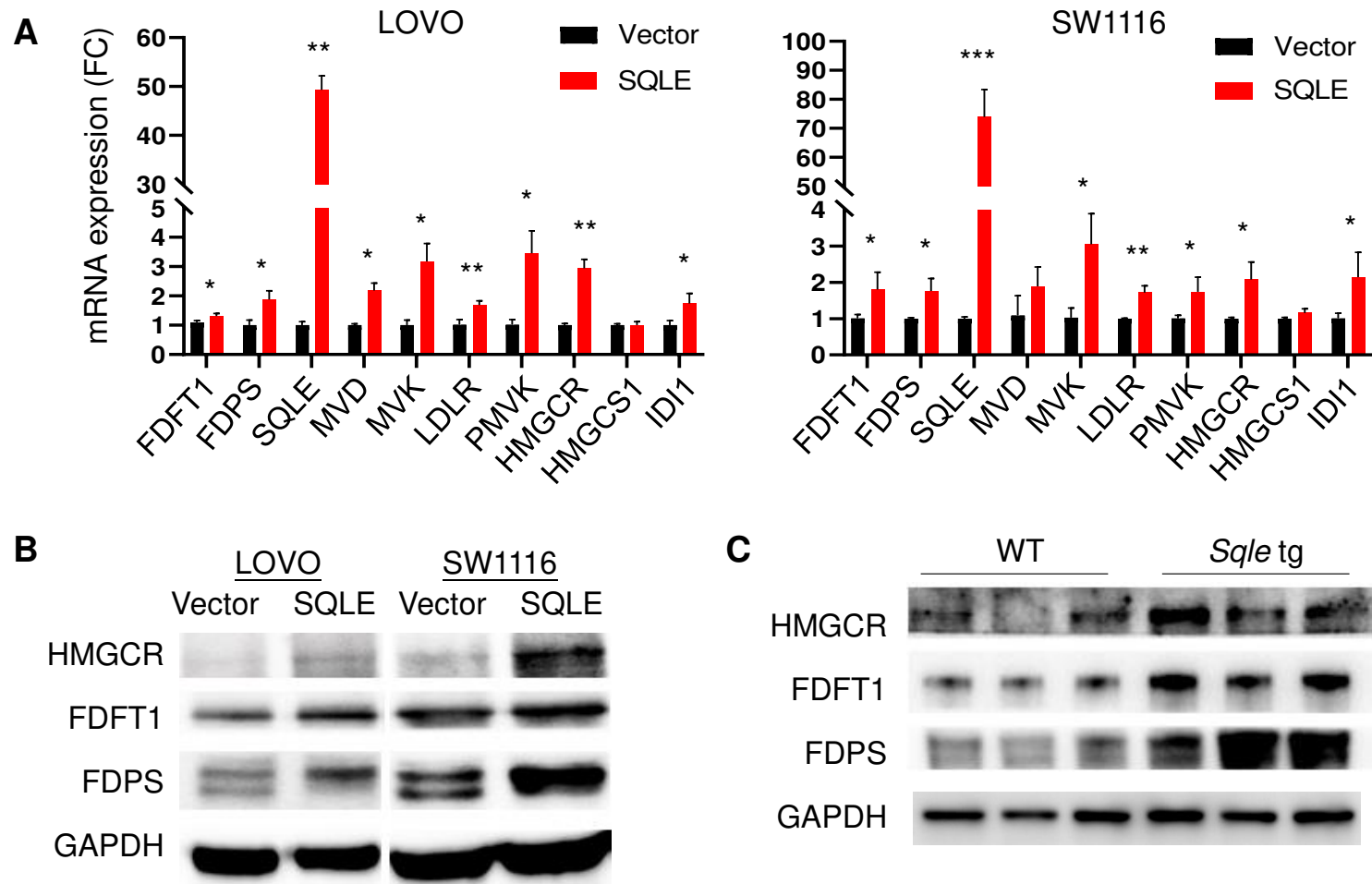
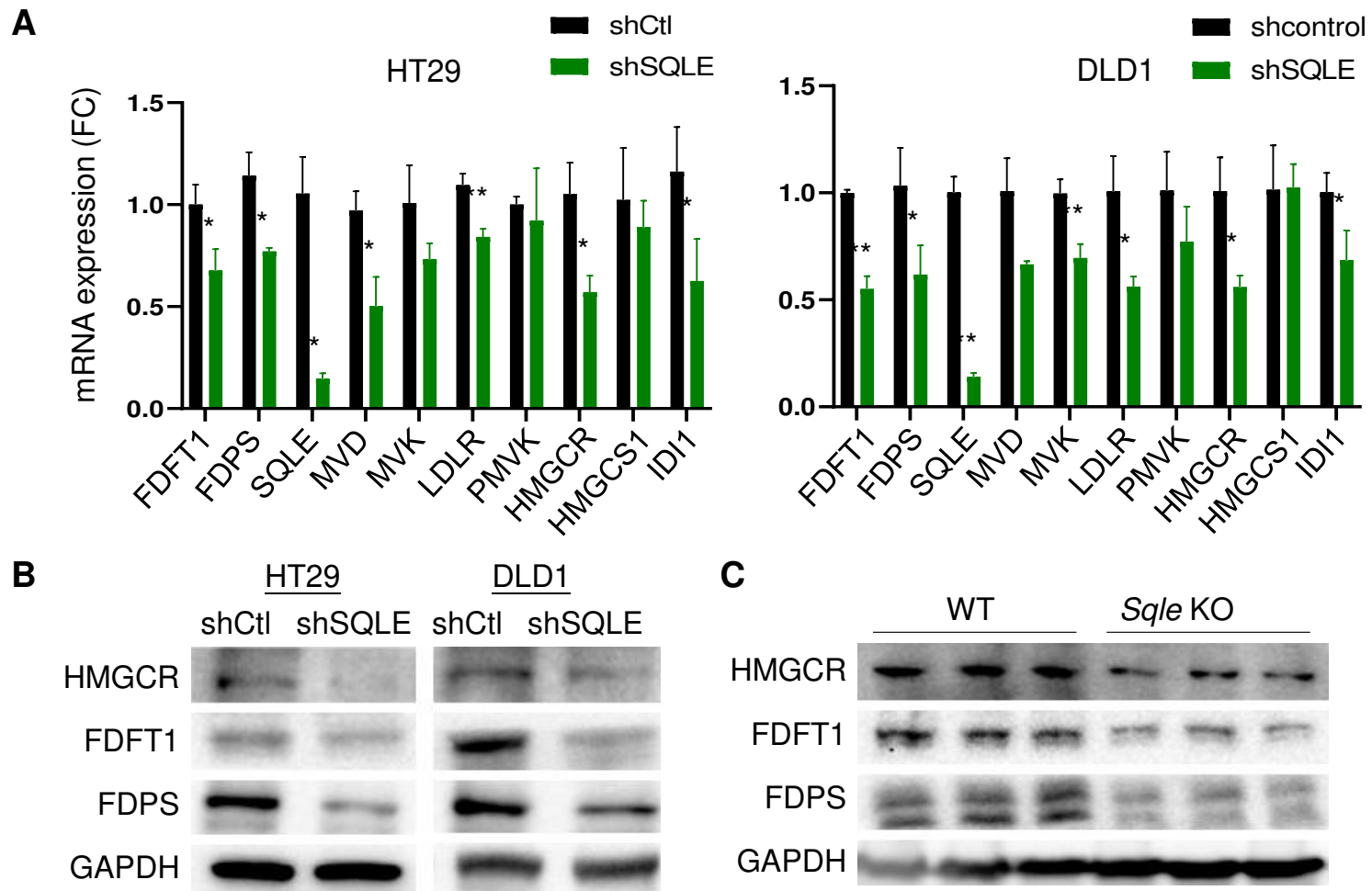


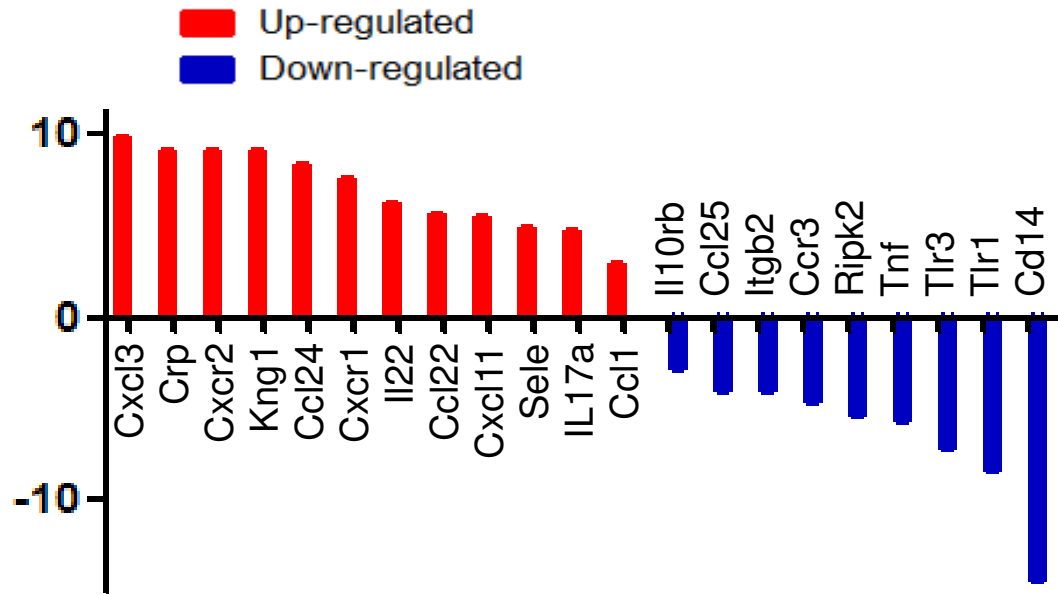
**Figure S1.** SQLE mRNA (**A**) and protein (**B**) expression was determined by qPCR and Western blot.



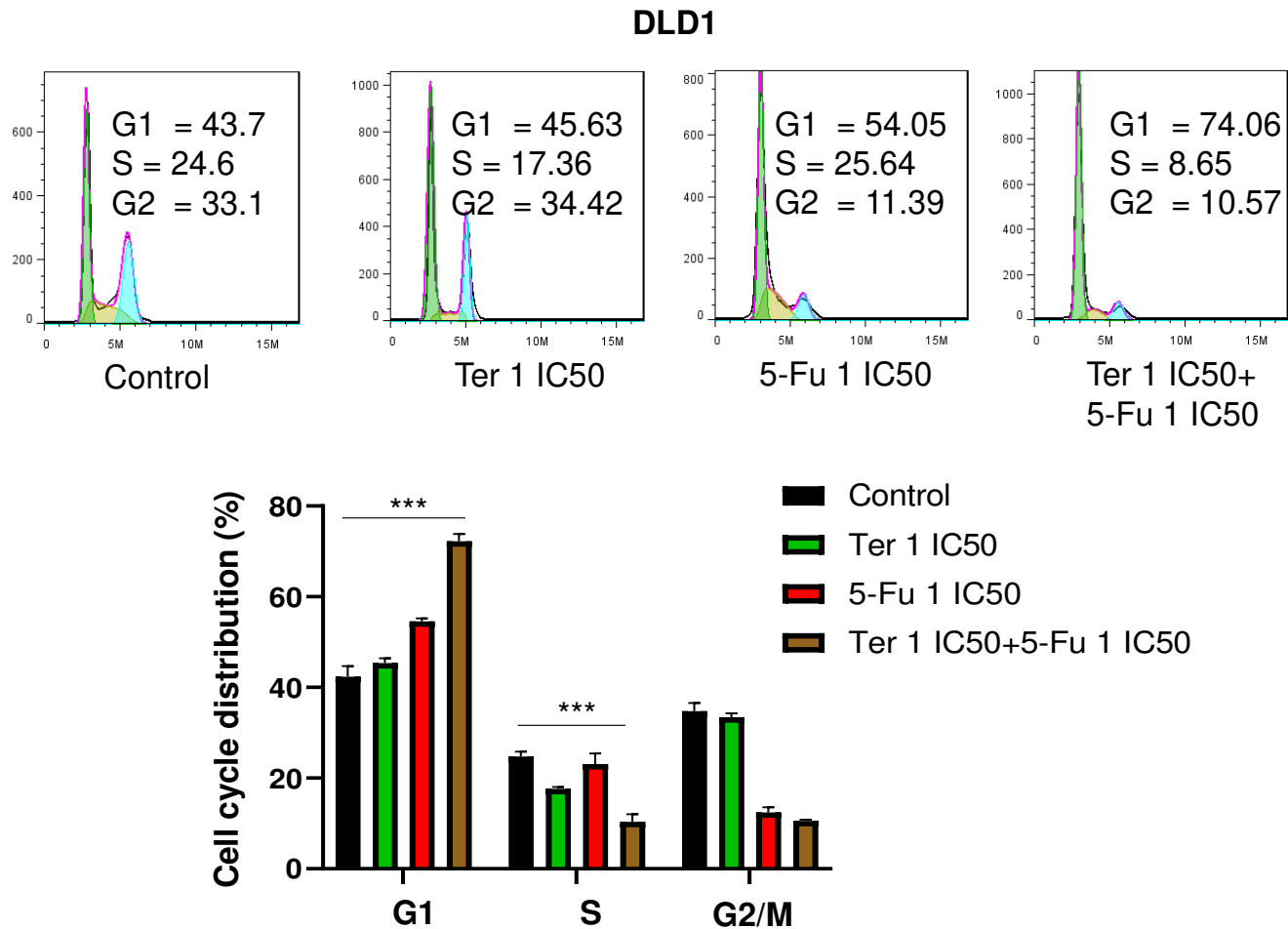
**Figure S2.** SQLE overexpression promotes genes of cholesterol biosynthesis pathway in (A) CRC cell lines by qPCR (A) and Western blot (B), and in colon-specific *Sqle* tg mice by Western blot (C).



**Figure S3.** SQLE knockdown inhibits genes of cholesterol biosynthesis pathway in (A) CRC cell lines by qPCR (A) and Western blot (B), and in colon-specific *Sqle* tg mice by Western blot (C).



**Figure S4.** Inflammation pathway PCR array analysis of the colon tissues from Sqle tg mice and wildtype littermates.



**Figure S5.** Terbinafine in combination with 5-FU synergistically induced G1 cell cycle arrest in DLD1 cells.